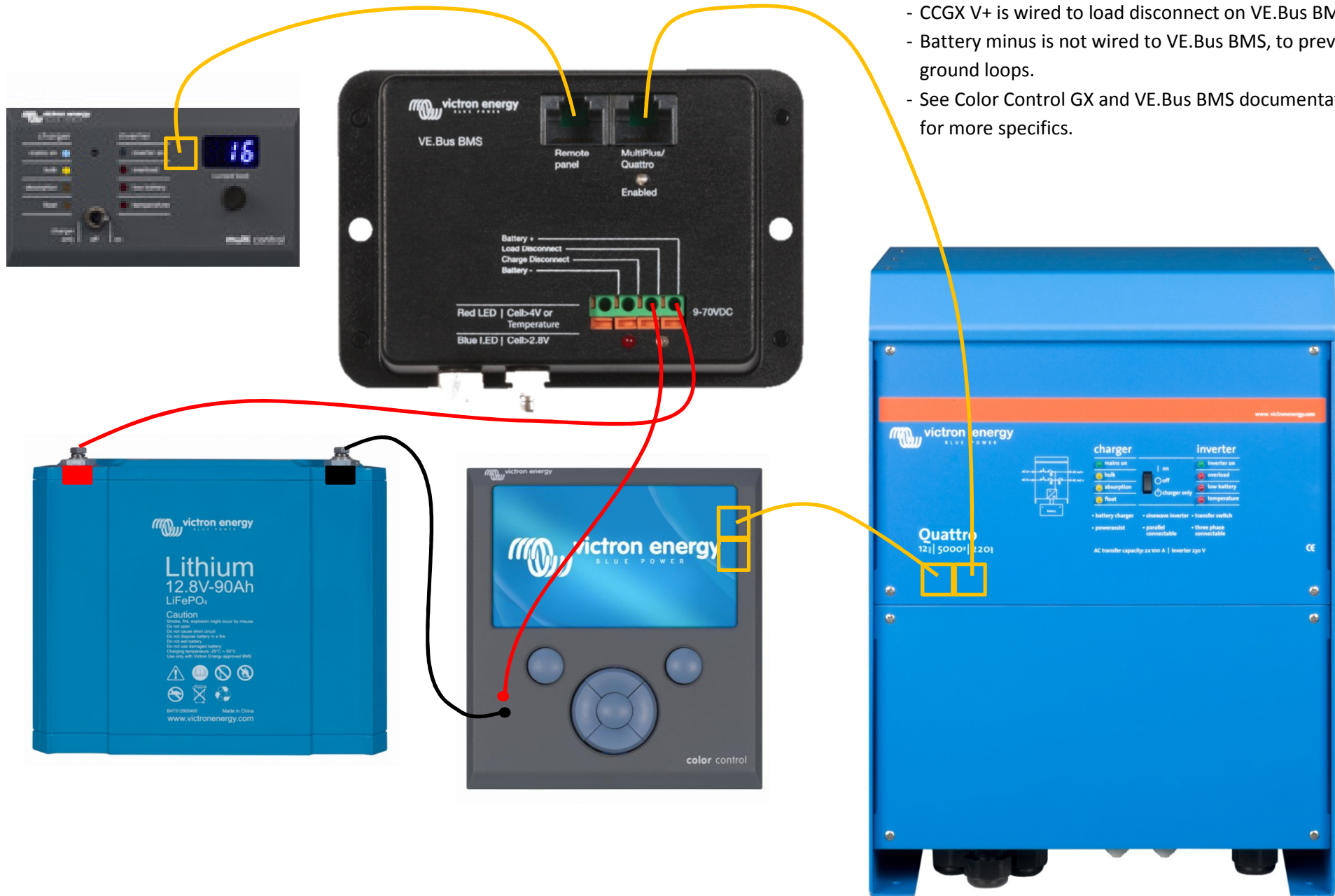


Combining a VE.Bus BMS with Color Control GX



Notes

- only VE.Bus network and VE.Bus BMS and Color Control GX power wires are shown.
- CCGX V+ is wired to load disconnect on VE.Bus BMS
- Battery minus is not wired to VE.Bus BMS, to prevent ground loops.
- See Color Control GX and VE.Bus BMS documentation for more specifics.