

VRM: Remote VEConfigure

1. Introduction

This manual describes how to remotely change settings in our MultiPlusses, MultiGrid, MultiPlus-II, Quattros and high power Inverters; all power products with a VE.Bus communication port. A feature called Remote VEConfigure.

This functionality requires a [Venus-device](#) (CCGX, Venus GX or other) to be installed locally on the system.

Requirements:

- Venus OS v2.17 or later
- System must be connected to internet and communicating to the VRM Portal.
- Two way communication must be enabled

Details:

- Remote VEConfigure works for both single unit systems as parallel and three phase systems.
- Remotely changing Assistant configuration is possible.
- VE.Bus firmware versions 416 and 417 can not be configured remotely
- Remote configuring firmware version 418 or later requires the CCGX or Venus GX to run v2.10 or later
- To Remote VEConfigure a system connected to the CCGX via a VE.Bus to VE.Can interface, as was done in old Hub-1 systems, this interface cable needs to run firmware version v2.05 or higher. If necessary, first update that interface cable with the [Remote firmware update feature](#).
- This (new) way of Remote VEConfigure replaces the previous mechanism, that used VE.Power Setup. See [here](#) for the manual of the old procedure. Note that, once updated to the new Venus version, it is no longer possible to use the old procedure.

In some cases the VE.Bus system will momentarily be switched off when changing the configuration. See step 4 for more details.

2. Step by step procedure

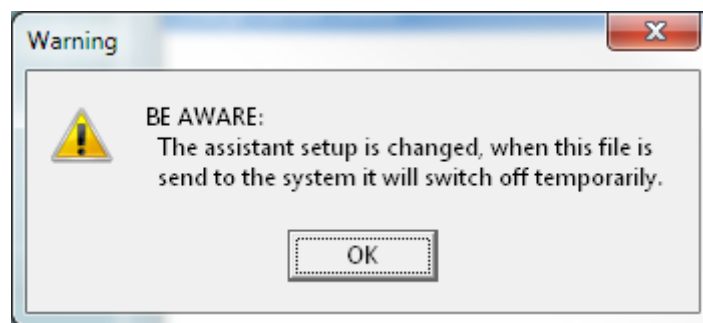


Video

1. Check the requirements
 1. Venus OS v2.17 or later
 2. Two way communication enabled (see Settings → Services on the [Venus-device](#))
 3. Two way communication up & running: check on the Device list page on VRM
2. On the VRM Portal, go to Device List, and scroll to the bottom to find the Remote VEConfigure button on the VRM Portal
3. Download the file to your computer
4. Modify the configuration, save the file using the Close button in VEConfigure on the upper right. This will automatically save the settings. It is not necessary, and also not possible, to save it via the file menu.
5. Upload the file to the system

3. System shutdown during reconfiguration

Many settings can be changed without resulting in a shutdown during the re-configuration. Some settings though, such as a changed Assistants configuration, will cause the inverter/charger to momentarily switch off and back on again. In such situations, VEConfig will warn when saving the settings:



Depending on how the internet communication equipment (ie. router) is powered, the internet connection might also be temporarily lost at that time.

This is not a problem, as the file is first uploaded to the [Venus-device](#), and only once received and verified it will be written to the VE.Bus system.

However, it is required to make sure that the [Venus-device](#) is not switched off during the reconfiguration. In other words: do not power the [Venus-device](#) with an AC adapter on the AC output of the system. It is usually best to power it from a reliable DC supply such as the batteries.

From:
<https://www.victronenergy.com/live/> - **Victron Energy**

Permanent link:
https://www.victronenergy.com/live/vrn_portal:remote-veconfigure?rev=1544101020

Last update: **2018-12-06 13:57**

