

# VE.Smart Networking

## 1. Introduction

A VE.Smart Network is a wireless network which allows a number of Victron products to exchange information. It is a wireless technology using Bluetooth Smart.

Use VE.Smart to add remote voltage- and temperature- sensing to your Victron MPPT Solar Chargers. Connect either a BMV battery monitor - or the new Smart Battery Sense, to a Solar Charger. The Solar Charger will receive battery voltage & temperature information, and use that data to optimize its charge parameters. This will improve charging-efficiency and prolong battery life.



## Video

## 2. Voltage and temperature sense - further details

The battery voltage data is used to compensate for voltage-drop over the battery cables. This ensures that the battery is charged with the exact voltage as configured in the charger - instead of a slightly lower voltage due to resistance in the wiring.

The battery temperature data is used to adjust the charge voltages. When cold, a lead/acid battery typically needs a higher charge-voltage ...and a lower charge-voltage when it's hot. For lithium batteries the charge-voltages remain the same at all temperatures ...as long as it's not too cold: Below 5C Lithium battery-charging is disabled to prevent them from being damaged and degraded.

For more information about temperature compensation, and choosing charge-parameter configurations, see [the available charge parameters](#).

## 3. Specifications

### 3.1 Products ranges that support VE.Smart Networking

Product range	Requires dongle <sup>(1)</sup>	Function
BMV-700	Yes	Voltage-sense
BMV-702	Yes	Voltage-sense, and (optionally) temperature <sup>(2)</sup>
BMV-712	No	Voltage-sense, and (optionally) temperature <sup>(2)</sup>
SmartSolar MPPTs	No <sup>(3)</sup>	Uses received sense data to optimize charging
BlueSolar MPPTs	Yes	Uses received sense data to optimize charging

1. Requires the [VE.Direct Bluetooth Smart Dongle](#), part number [ASS030536011](#).
2. To measure battery temperature, the [BMV series temperature sensor is required](#).
3. Check the table below to see which models support this feature.

Older versions of our hardware do not support VE.Smart Networking. A list of the older *incompatible* products and part-numbers - together with the newer *compatible* part numbers is as follows :

Product	Incompatible Part-number	Smart-net compatible Part-number
VE.Direct Bluetooth Smart dongle	ASS030536010	ASS030536011
SmartSolar MPPTs 150/85	SCC010085210 & SCC010085310	SCC115085211 & SCC115085311
SmartSolar MPPTs 150/100	SCC010100210 & SCC010100310	SCC115110211 & SCC115110311
SmartSolar MPPTs 250/85	SCC125085210 & SCC125085310	Compatible model coming soon.
SmartSolar MPPTs 250/100	SCC125110210 & SCC125110310	

### 3.2 Limitations

- The maximum number of devices which can be connected on one network is 25.
- VE.Smart Networking is designed for small systems which do not have a Venus-device - such as a Color Control GX or Venus GX. In systems which have a Venus-device, do not use VE.Smart Networking.
- The transmitter range will be found to be the same as the Bluetooth range - as experienced when connecting a device to *VictronConnect*.

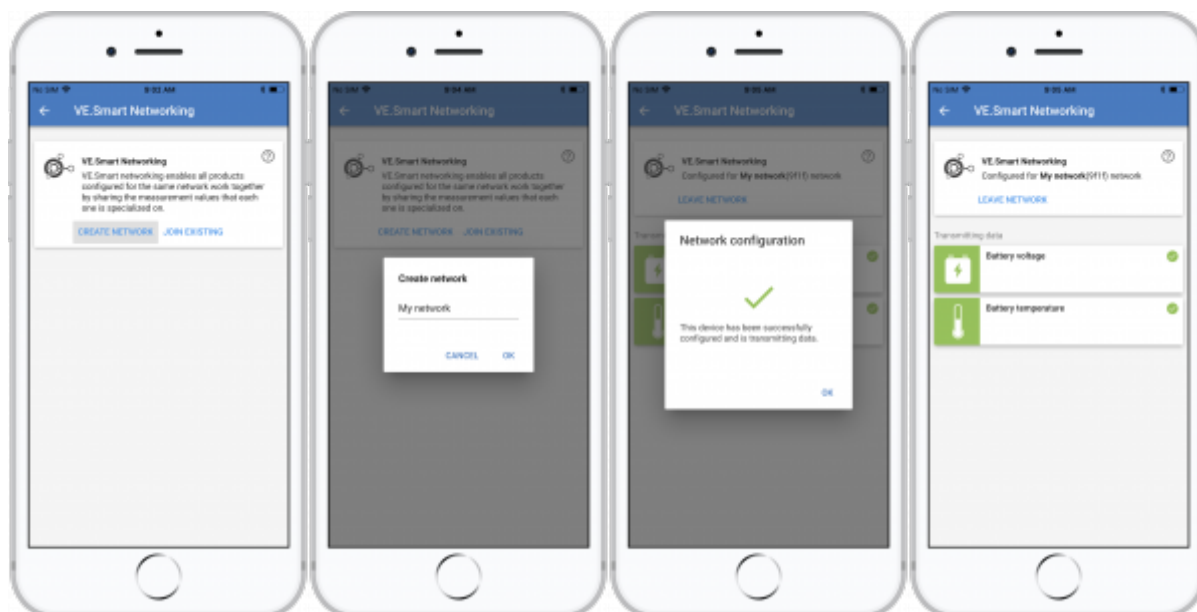
## 4. Step by step instructions

We recommend you configure the Smart Battery Sense, or BMV first ...and *then* add one or more solar chargers to that network.

### 4.1 Setup the Smart Battery Sense or BMV

Open [VictronConnect](#), connect the device, and then navigate to *Settings* and select *VE.Smart Networking*.

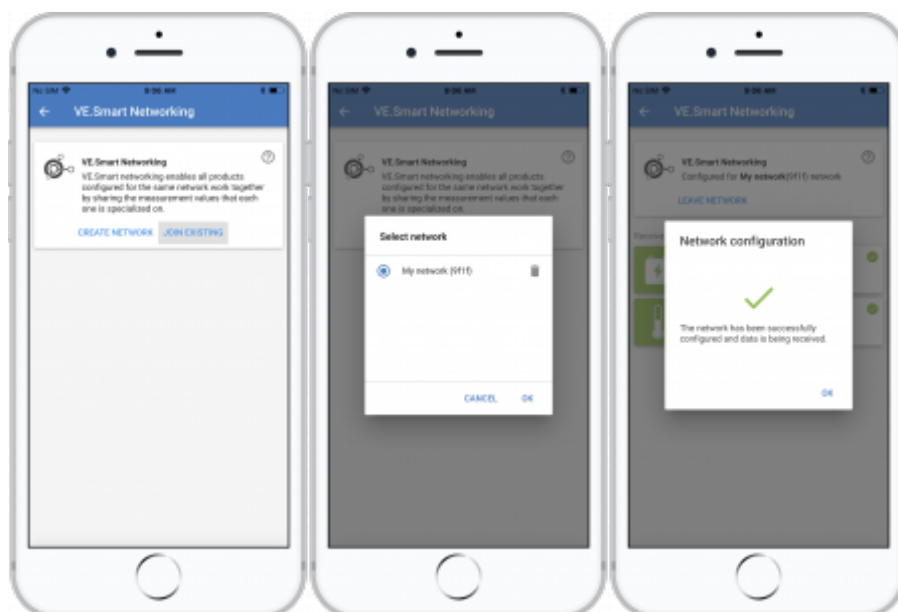
Click *Create Network*, enter a name. Click *Save* and wait for the 'OK' to show up.



## 4.2 Join the Solar Chargers to the network

Go back and navigate to the *Solar charger*, then click *Settings* followed by *VE.Smart Networking* followed by *Join Existing*. Now select the network which you created at the previous step.


Wait for the 'OK' to show.



## 4.3 Verify operation

When everything is working OK, you will be able to see that the VE.Smart Networking page of the Solar Charger is receiving data:



Also the network icon  will be shown on the main page:



Clicking on that icon will show the network status.

## 5. FAQ

**Q1: Will you be adding wireless parallel charging as a feature?**

Yes we will - though we do not have a date for its introduction yet.

**Q2: Can several MPPTs be paired to one Smart Battery Sense or BMV?**

Yes.

**Q3: Is VE.Smart Networking disrupted if I connect a smartphone to it at the same time?**

Not at all. It is possible to connect with a smart phone, computer or tablet, at the same time.

**Q4: Will you add the same functionality to the BlueSmart Charger product range?**

Yes we will - though the exact functionality, and the models to be included has yet to be determined.

**Q5: Can Smart Battery Sense be used as a standalone product?**

Yes. In this instance it will simply act as a voltage- and temperature-measuring device. Note that the functionality is limited in that it does not (yet) show the graphs or other data which would normally be generated from these measurements.

## DISQUS

~~DISQUS~~

From:

<https://www.victronenergy.com/live/> - **Victron Energy**

Permanent link:

<https://www.victronenergy.com/live/victronconnect:ve-smart-networking?rev=1519805586>

Last update: **2018-02-28 09:13**

