

VE.Smart Networking

1. Introduction

A VE.Smart Network is a wireless network which allows a number of Victron products to exchange information. It is a wireless technology using Bluetooth Smart.

Use VE.Smart to add remote voltage- and temperature- sensing to your Victron MPPT Solar Chargers. Connect either a BMV battery monitor - or the new Smart Battery Sense, to a Solar Charger. The Solar Charger will receive battery voltage & temperature information, and use that data to optimize its charge parameters. This will improve charging-efficiency and prolong battery life.



Video

2. Voltage and temp sense - further details

The battery voltage data is used to compensate for voltage-drop over the battery cables. This ensures that the battery is charged with the exact voltage as configured in the charger - instead of the slightly lower voltage due to resistance in the wiring.

The battery temperature data is used to adjust the charge voltages. When cold, a lead/acid battery typically needs a higher charge-voltage ...and a lower charge-voltage when it's hot. For lithium batteries the charge-voltages remain the same at all temperatures ...as long as it's not too cold: Below 5C Lithium battery-charging is disabled to prevent them from being damaged and degraded.

For more information about temperature compensation, and choosing charge-parameter configurations, see [the available charge parameters](#).

3. Specifications

3.1 Products that support VE.Smart Networking

- BMV-700 + VE.Direct Smart Dongle: Will transmit battery voltage data.
- BMV-702 + VE.Direct Smart Dongle: Will transmit battery voltage data and, when the temperature accessory installed, temperature data.
- BlueSolar MPPTs with VE.Direct Smart Dongle: Will receive battery voltage & temperature data.
- SmartSolar MPPTs: Will receive battery voltage & temperature data.

Older versions of our hardware do not support VE.Smart Networking. A list of the older *incompatible* products and part-numbers - together with the newer *compatible* part numbers is as follows :

Product	Incompatible Part-number	Smart-net compatible Part-number
VE.Direct Bluetooth Smart dongle	ASS030536010	ASS030536011
SmartSolar MPPTs 150/85	SCC010085210 & SCC010085310	SCC115085211 & SCC115085311
SmartSolar MPPTs 150/100	SCC010100210 & SCC010100310	SCC115110211 & SCC115110311
SmartSolar MPPTs 250/85	SCC125085210 & SCC125085310	Compatible model coming soon.
SmartSolar MPPTs 250/100	SCC125110210 & SCC125110310	

3.2 Limitations

- The maximum number of devices which can be connected on one network is 25.
- VE.Smart Networking is designed for small systems which do not have a Venus-device - such as a Color Control GX or Venus GX. In systems which have a Venus-device, do not use VE.Smart Networking.
- The transmitter range will be found to be the same as the Bluetooth range - as experienced when connecting a device to *VictronConnect*.

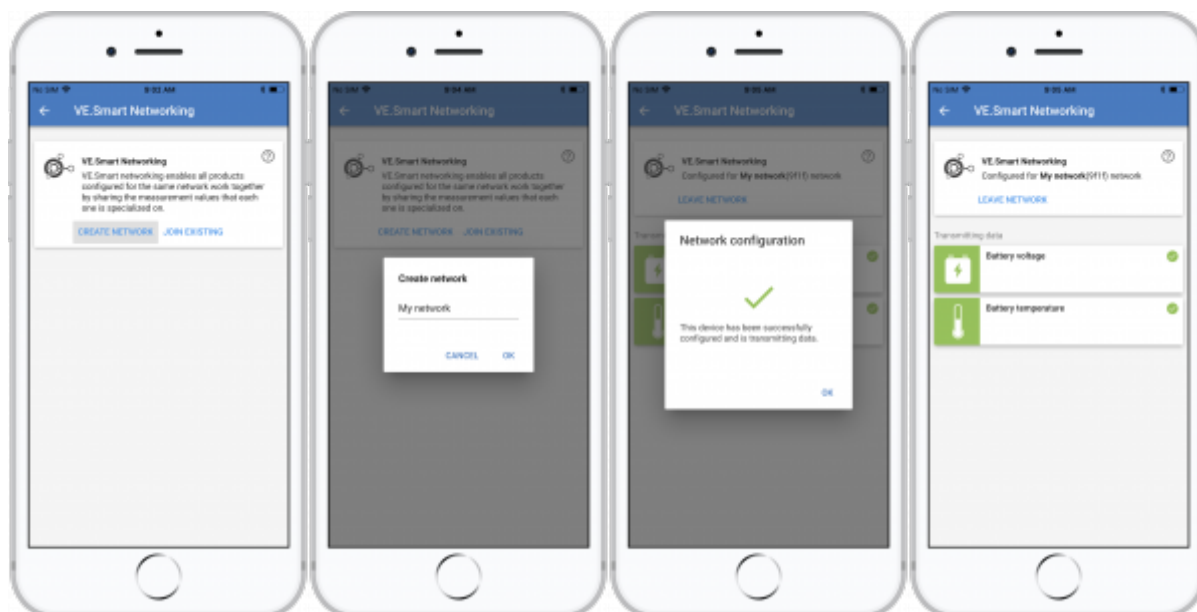
4. Step by step instructions

We recommend you configure the Smart Battery Sense, or BMV first ...and *then* add one or more solar chargers to that network.

4.1 Setup the Smart Battery Sense or BMV

Open [VictronConnect](#), connect the device, and then navigate to *Settings* and select *VE.Smart Networking*.

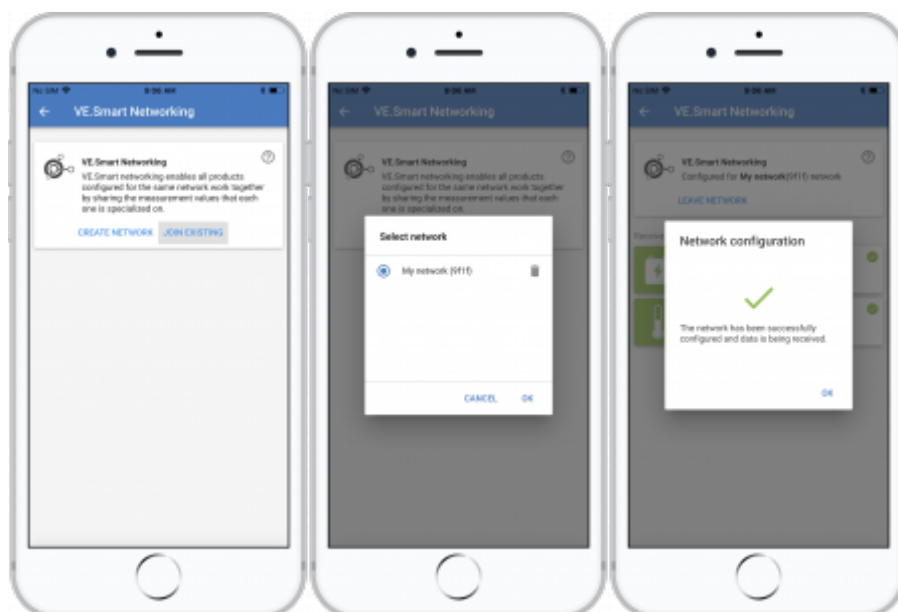
Click *Create Network*, enter a name. Click *Save* and wait for the 'OK' to show up.



4.2 Join the Solar Chargers to the network

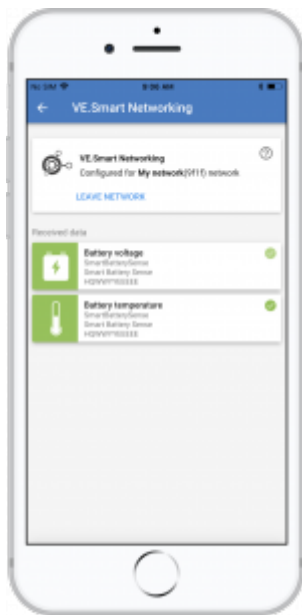
Go back and navigate to the *Solar charger*, then click *Settings* followed by *VE.Smart Networking* followed by *Join Existing*. Now select the network which you created at the previous step.


Wait for the 'OK' to show.

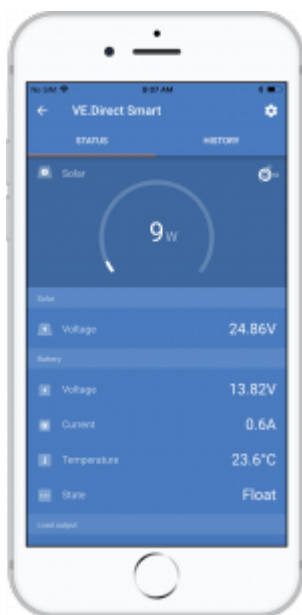


4.3 Verify operation

When everything is working OK, you will be able to see that the VE.Smart Networking page of the Solar Charger is receiving data:



Also the network icon  will be shown on the main page:



Clicking on that icon will show the network status.

5. FAQ

Q1: Will you be adding wireless parallel charging as a feature?

Yes we will - though we do not have a date for its introduction yet.

Q2: Can several MPPTs be paired to one Smart Battery Sense or BMV?

Yes.

Q3: Is VE.Smart Networking disrupted if I connect a smartphone to it at the same time?

Not at all. It is possible to connect with a smart phone, computer or tablet, at the same time.

Q4: Will you add the same functionality to the BlueSmart Charger product range?

Yes we will - though the exact functionality, and the models to be included has yet to be determined.

Q5: Can the Smart Battery Sense also be used as a standalone product?

Yes. Then it will be a simple voltage & temperature measurement device. Note that the functionality is limited, as in that it does not (yet) show graphs and other data that could be generated from the measurements.

DISQUS

~~DISQUS~~

From:

<https://www.victronenergy.com/live/> - **Victron Energy**

Permanent link:

<https://www.victronenergy.com/live/victronconnect:ve-smart-networking?rev=1519732820>

Last update: **2018-02-27 13:00**

