

# Raymarine MFD Integration

## 1. Introduction

The integration technology used is called [LightHouse Apps](#) by Raymarine.

## 2. Compatibility

The MFD integration is compatible with the Axiom, Axiom Pro and Axiom XL MFDs running on LightHouse 3. The eS & gS Series multifunction displays which have been upgraded to LightHouse 3 are **not** compatible.

Raymarine MFDs need at least LightHouse v3.11 for compatibility, which was released in November 2019.

## 3. Wiring

The MFD needs to be connected to the [GX device](#) using ethernet. It is **not** possible to connect over Wi-Fi. For the ethernet connection, a RayNet adapter is required.

The RayNet adapters can be purchased from Raymarine:

- A62360 - RayNet (F) to RJ45 (M) - 1m
- A80151 - RayNet (F) to RJ45 (M) - 3m
- A80159 - RayNet (F) to RJ45 (M) - 10m
- A80247 - RayNet (F) to RJ45 (F) Adapter
- A80513 - RayNet male to RJ45 adaptor cable

Connecting a Axiom MFD to a network router might lead to IP address conflicts, due to the integrated DHCP server.

To connect the [GX device](#) to the internet, it is recommended to use Wi-Fi.

## 4. Configuration

On the Victron GX Device, go to Settings → Services, and there enable both MQTT on LAN (SSL) and MQTT on LAN (Plaintext).

Next, go to Settings → System Setup → Scroll to the bottom → Battery measurements. And there set up what batteries you want to see on the MFD; and by what name.

No other settings, such as IP addresses or similar are required, since the Axiom MFDs have an integrated DHCP server.

## 5. Configuring Multiple Battery Measurements

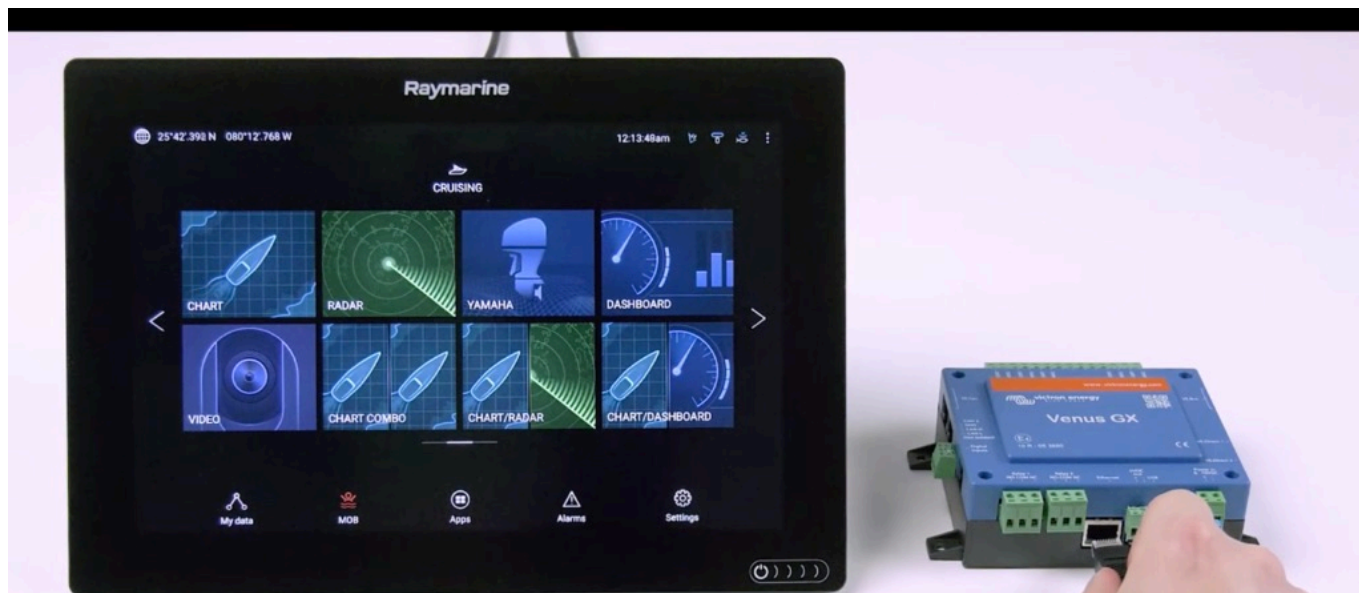
This video explains how to setup multiple battery measurements, and naming them.



### Video

## 6. Step by Step



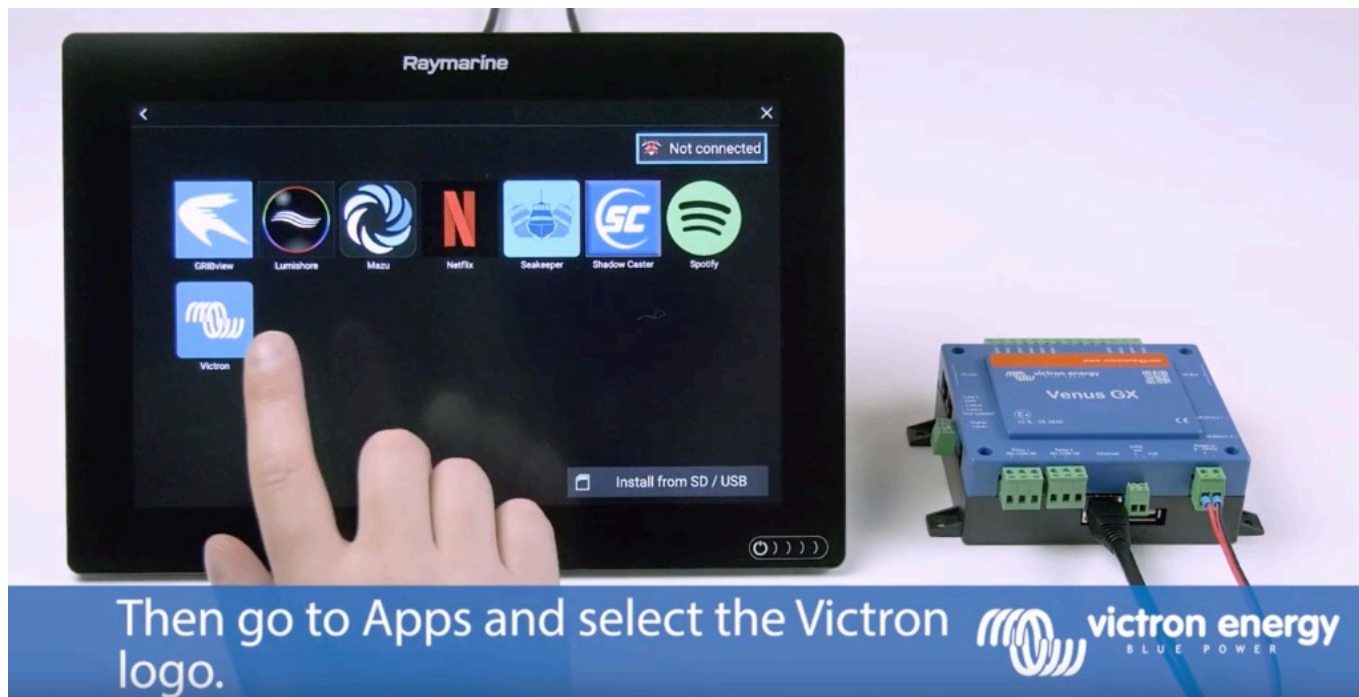


Step 2: Connect RJ45 into Victron Venus GX, Color Control GX or Octo GX.

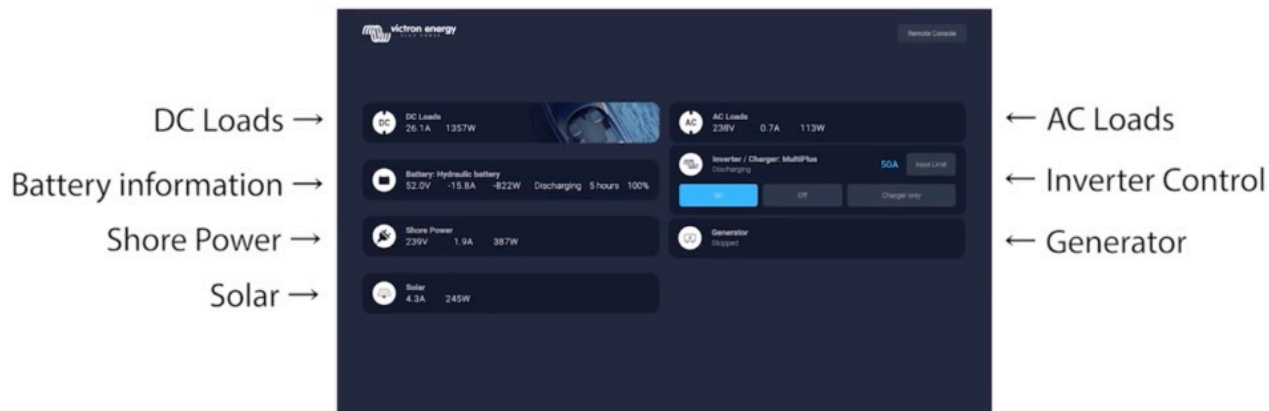


Then go to Apps and select the Victron logo.









All information can now be viewed  
on one screen.



## Video

From:

<https://www.victronenergy.com/live/> - **Victron Energy**

Permanent link:

<https://www.victronenergy.com/live/venus-os:mfd-raymarine?rev=1585206839>

Last update: **2020-03-26 08:13**

