

Raymarine MFD Integration

This manual is still being actively developed.

1. Introduction

The integration technology used is called [LightHouse Apps](#).

2. Compatibility

The MFD integration is compatible with the Axiom, Axiom Pro and Axiom XL MFDs running on LightHouse 3. The eS & gS Series multifunction displays which have been upgraded to LightHouse 3 are **not** compatible.

Raymarine MFDs need at least LightHouse v3.11 for compatibility.

3. Wiring

The MFD needs to be connected to the [GX device](#) using ethernet. It is **not** possible to connect over Wi-Fi. For the ethernet connection, a RayNet adapter is required.

The RayNet adapters can be purchased from Raymarine:

- A62360 - RayNet (F) to RJ45 (M) - 1m
- A80151 - RayNet (F) to RJ45 (M) - 3m
- A80159 - RayNet (F) to RJ45 (M) - 10m
- A80247 - RayNet (F) to RJ45 (F) Adapter
- A80513 - RayNet male to RJ45 adaptor cable

4. Configuration

On the Victron GX Device, go to Settings → Services, and there enable MQTT.

Next, go to Settings → System Setup → Scroll to the bottom → Battery measurements. And there set up what batteries you want to see on the MFD; and by what name.

No other settings, such as IP addresses or similar are required, since the Axiom MFDs have an integrated DHCP server.

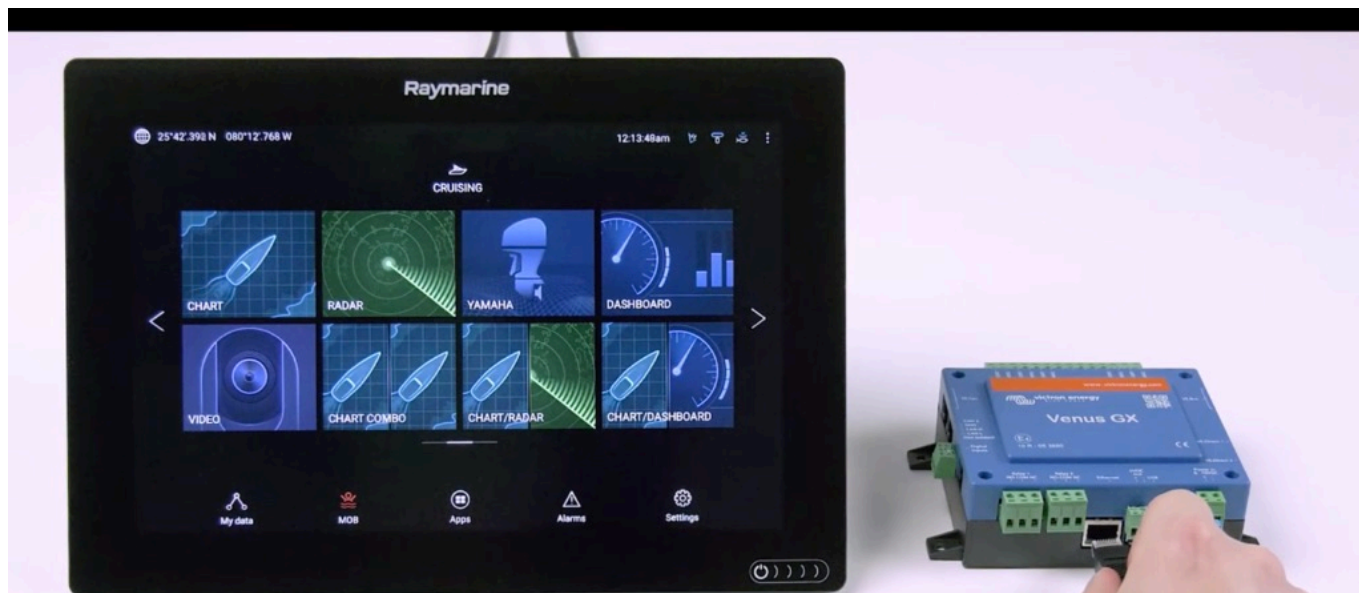
5. Configuring Multiple Battery Monitors



Video

6. Step by Step





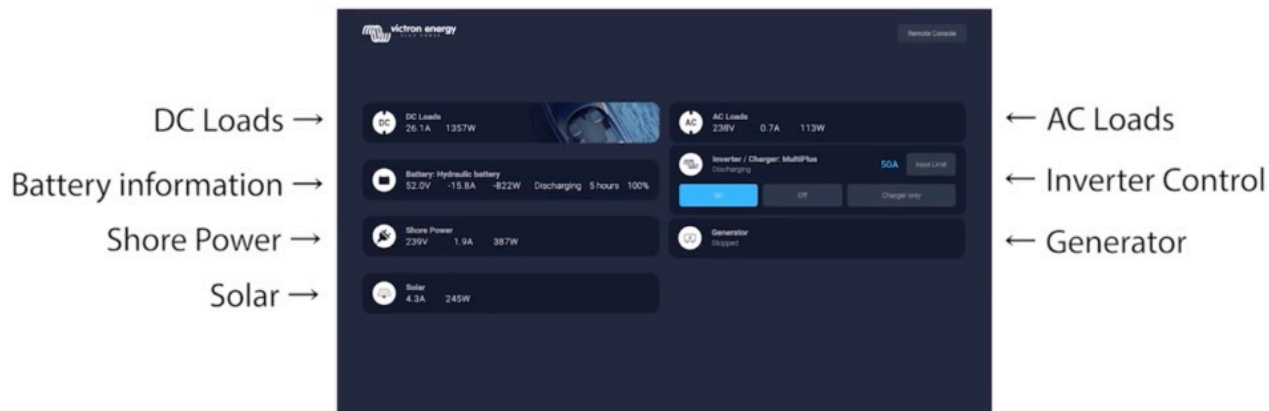
Step 2: Connect RJ45 into Victron Venus GX, Color Control GX or Octo GX.



Then go to Apps and select the Victron logo.







All information can now be viewed
on one screen.



Video

From:

<https://www.victronenergy.com/live/> - **Victron Energy**

Permanent link:

<https://www.victronenergy.com/live/venus-os:mfd-raymarine?rev=1573640374>

Last update: **2019-11-13 11:19**

