

Navico MFD Integration

1. Introduction

Navico is the overall brand behind the B&G, Simrad and Lowrance MFDs.

This document explains how to connect to Navico MFDs using an Ethernet connection.

Make sure to also study the [Marine MFD Integration by App chapter in the manual](#).

Note that there is an alternative method to connect, which is NMEA2000. See the [NMEA2000 chapter in the main manual](#).

2. Compatibility

Navico compatible hardware:

	Product	Display Size						Comments
Simrad	NSO EVO3				16	19	24	
	NSO EVO2				16	19	24	
	NSS EVO3	7	9	12	16			
	Go	7*	9	12				5 is not compatible; no Ethernet port; *Go7 XSE not compatible – only Go7 XSR
B&G	Zeus3 Glass Helm				16	19	24	
	Zeus3	7	9	12	16			
	Vulcan	7	9	12				
Lowrance	HDS Live	7	9	12	16			
	HDS Carbon	7	9	12	16			
Information display	IDS		9	12				

Note that this feature also works on the Simrad NSS EVO2 and B&G Zeus2. But only limited. And its not officially supported and also there will be no new software releases made by either Victron nor Navico to fix any issues that may arise. In other words, it is not a supported configuration by Navico but the consumer can feel free to use it (if they contact Navico or Victron service, our team will tell them it is not a supported configuration). More testing and user feedback will have to show what does and what does not work on the EVO2/Zeus2.

At this moment it is not possible to control the Victron MFD App other than the touchscreen.

This means that you cannot use

- Local controls, i.e. WheelKey and arrow keys
- Simrad OP50
- B&G ZC2

From Victron side, all GX devices (Cerbo GX, CCGX, Venus GX, and so forth) can be used and are compatible. For details on detailed product compatibility with regarding to inverter/chargers and other components, see the [main Marine MFD App chapter in the GX Manual](#).

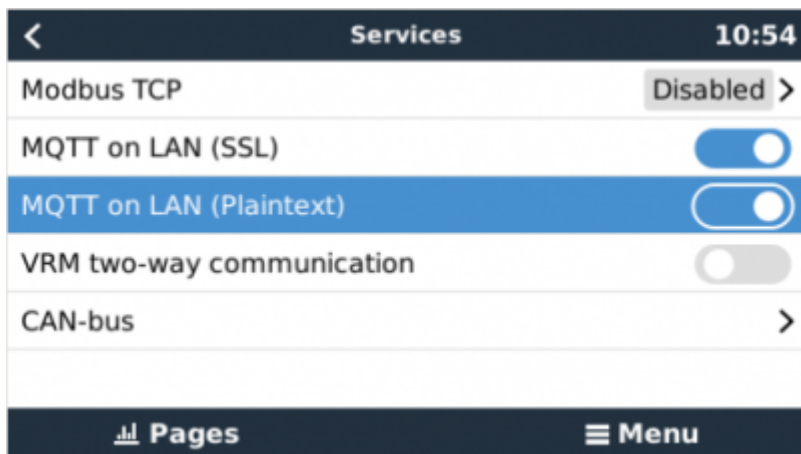
3. Wiring

The Navico device needs to be connected to the [GX device](#) using Ethernet. Its not possible to connect over WiFi. For the ethernet connection, a Navico adapter is required as the Navico MFDs feature a round water proof connector on the back. The adapters can be purchased from Navico:

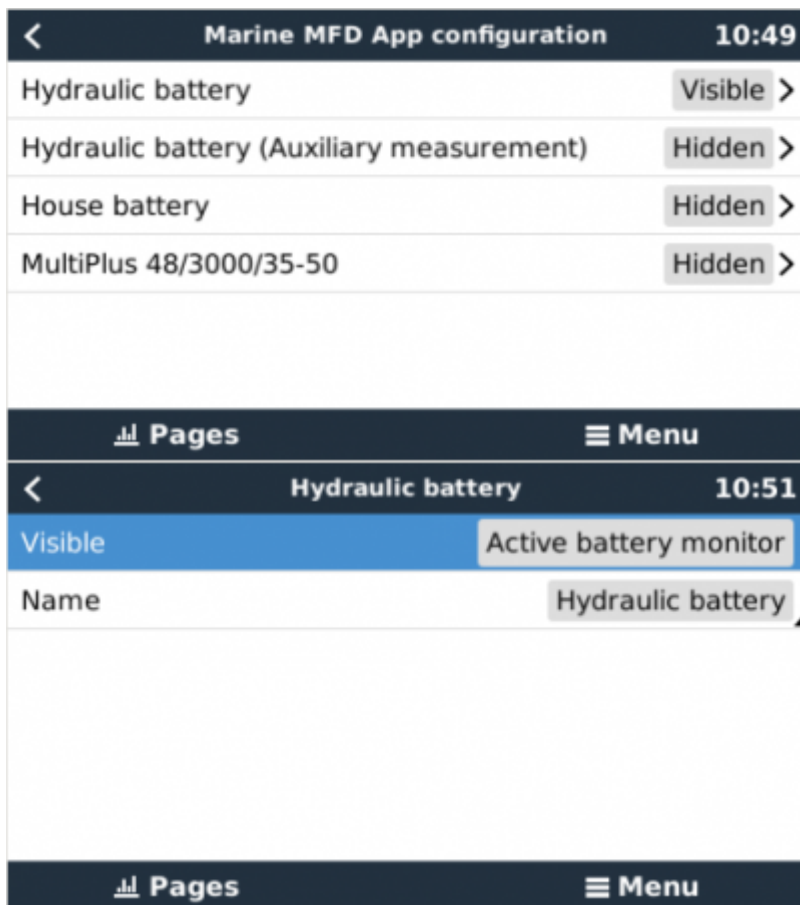
- ETHADAPT-2M 127-56
- CABLE RJ45M-5F ETH ADPTR NONWATERPRF

4. Configuration

On the Victron GX Device, go to *Settings* → *Services*, and there enable both *MQTT on LAN (SSL)* and *MQTT on LAN (Plaintext)*.



Next, go to *Menu* → *Settings* → *System Setup* → *Battery Measurements*. And there set up what batteries you want to see on the MFD; and by what name.



No other settings, such as IP addresses or similar are required. The [GX device](#) and the Navico devices connect to each other using a technology called linklocal addressing.

It is possible to connect the a router to the same LAN; and that way connect the GX Device to the internet. The GX device can also be connected to the internet via Wi-Fi or with a [GX GSM](#).

Note that the [GX GSM](#) can only be used if the MFD and [GX device](#) are directly connected to each other, without a router.

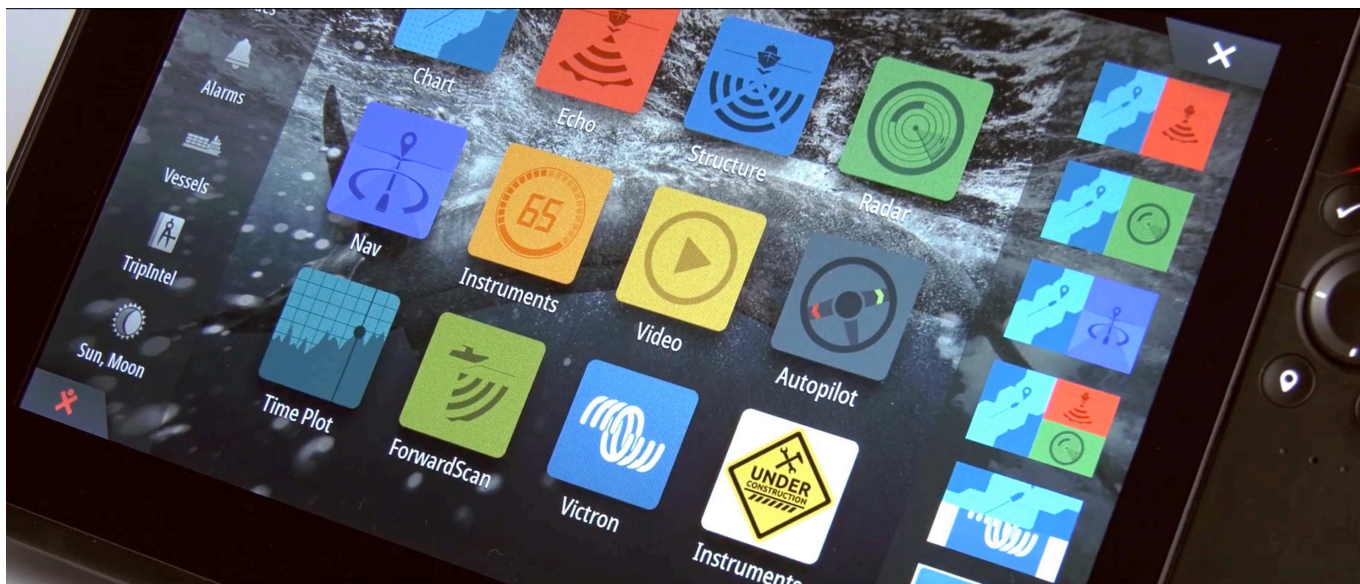
5. Configuring Multiple Battery Monitors



Video


6. Step by step





After a few seconds the Victron Energy  **victron energy**
BLUE POWER icon appears



And... you're done!  **victron energy**
BLUE POWER

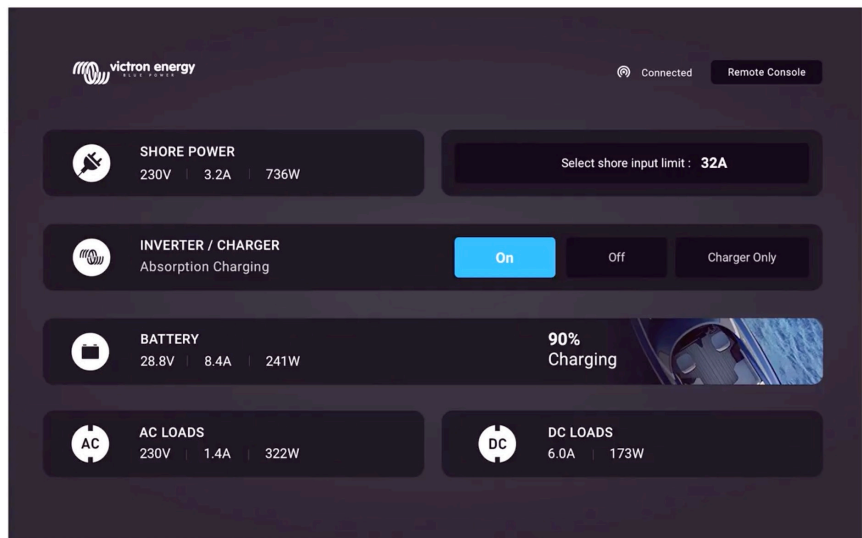


Shore power & generator information →

Inverter/charger information →

Battery information →

Load status →



All information can now be viewed on one screen.



7. NMEA 2000

The MFD can also be connected to the Victron system using NMEA 2000, see the [Marine Integration Guide](#).

The MFD can be configured easily to display the data from the GX device. There is no need to change any instance.

To setup the data sources on the MFD, go to *Settings > Network > Sources > Advanced...*

The following Victron related PGNs are supported:

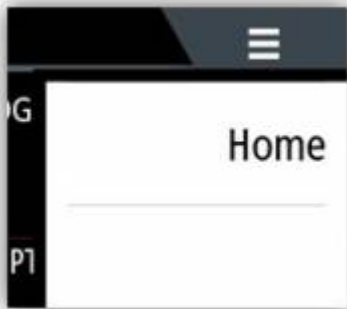
- 127505 - Fluid level (tanks)

- 127506 - DC Detailed Status; State-of-charge, Time-to-go
- 127507 - Charger Status
- 127508 - Battery Status; Voltage, Current
- 127509 - Inverter Status
- J1939 AC PGNs

8. Troubleshooting

Q1: The MFD page shows outdated information or shows the connection issue page, but the GX device is running and connected and the Victron icon is present on the home page.

A1: Try reloading the page by pressing the menu on the top right corner and select HOME.



From:
<https://www.victronenergy.com/live/> - **Victron Energy**

Permanent link:
<https://www.victronenergy.com/live/venus-os:mfd-navico?rev=1654065697>

Last update: **2022-06-01 08:41**

