

# Navico MFD Integration

## 1. Introduction

Navico is the overall brand behind the B&G, Simrad and Lowrance MFDs.

## 2. Compatibility

Navico compatible hardware:

	Product	Display Size						Comments
Simrad	NSO EVO3				16	19	24	
	NSO EVO2				16	19	24	
	NSS EVO3	7	9	12	16			
	Go	7*	9	12				5 is not compatible; no Ethernet port; *Go7 XSE not compatible – only Go7 XSR
B&G	Zeus3 Glass Helm				16	19	24	
	Zeus3	7	9	12	16			
	Vulcan	7	9	12				
Lowrance	HDS Live	7	9	12	16			
	HDS Carbon	7	9	12	16			
Information display	IDS		9	12				

Note that this feature also works on the NSS EVO2. But only limited. And its not officially supported and also there will be no new software releases made by either Victron nor Navico to fix any issues that may arise. In other words, it is not a supported configuration by Navico but the consumer can feel free to use it (if they contact Navico or Victron service, our team will tell them it is not a supported configuration). More testing and user feedback will have to show what does and what does not work on the EVO2.

## 3. Wiring

The Navico device needs to be connected to the [GX device](#) using Ethernet. Its not possible to connect over WiFi. For the ethernet connection, a Navico adapter is required as the Navico MFDs feature a round water proof connector on the back. The adapters can be purchased from Navico:

- ETHADAPT-2M 127-56
- CABLE RJ45M-5F ETH ADPTR NONWATERPRF

## 4. Configuration

On the Victron GX Device, go to Settings → Services, and there enable MQTT.

Next, go to Settings → System Setup → Scroll to the bottom → Battery measurements. And there set up what batteries you want to see on the MFD; and by what name.

No other settings, such as IP addresses or similar are required. The [GX device](#) and the Navico devices connect to each other using a technology called linklocal addressing.

It is possible to connect the a router to the same LAN; and that way connect the GX Device to the internet.

## 5. Configuring Multiple Battery Monitors

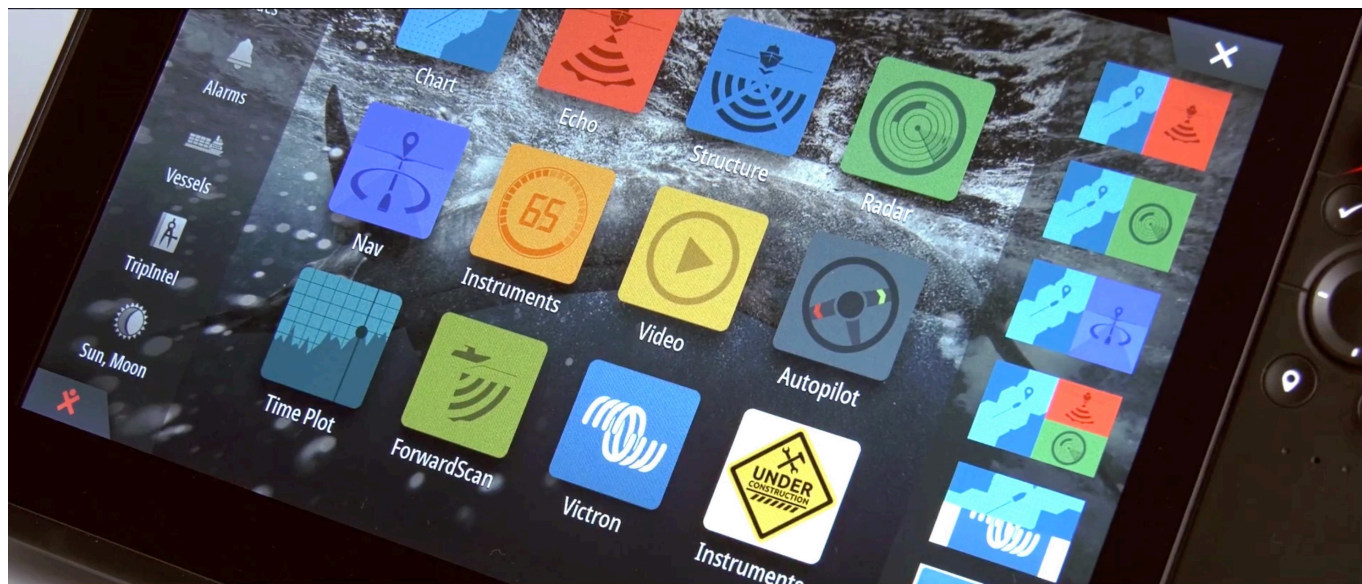


### Video

## 6. Step by step



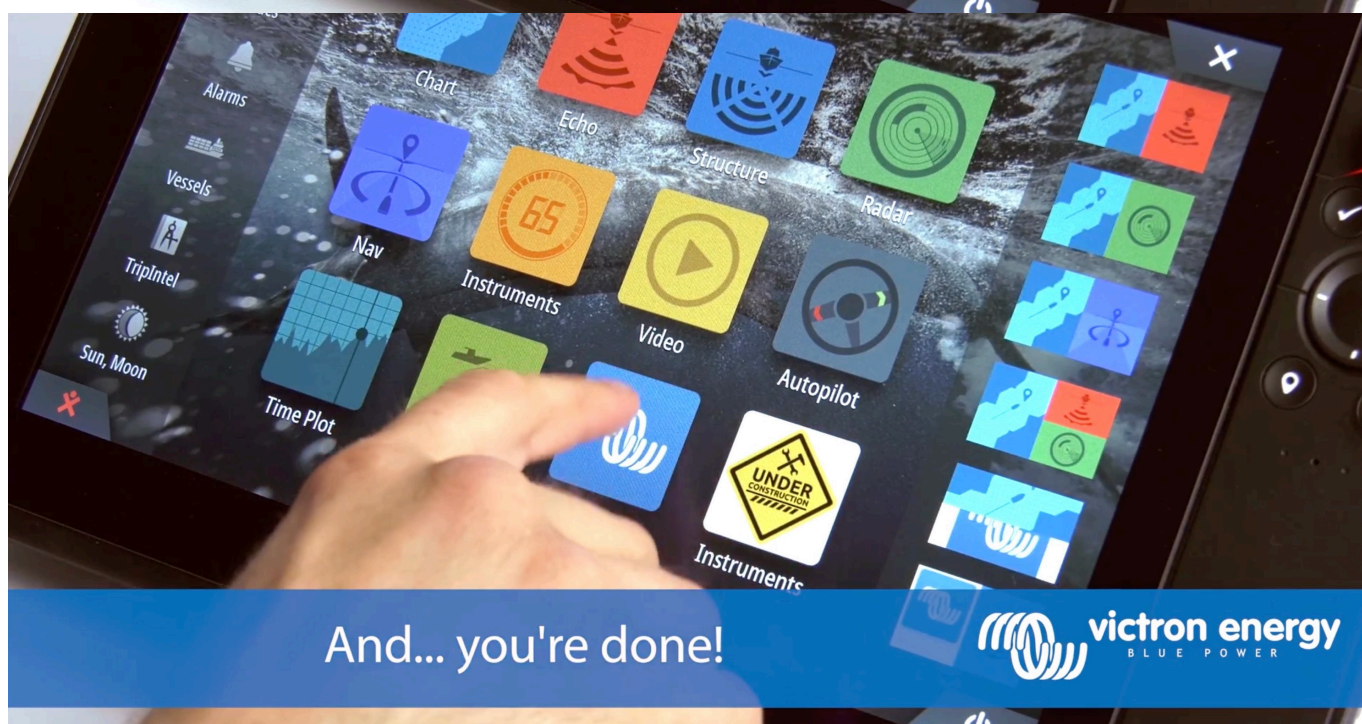




After a few seconds the Victron Energy icon appears



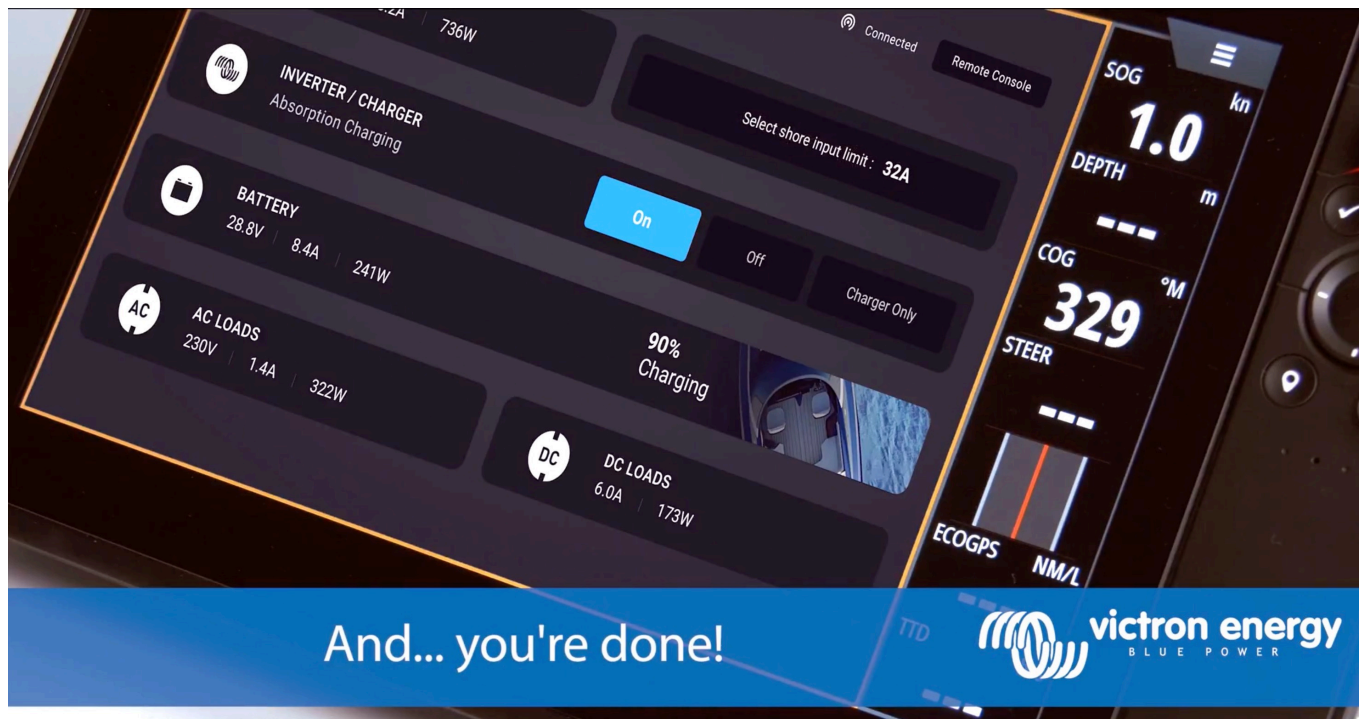
**victron energy**  
BLUE POWER



And... you're done!



**victron energy**  
BLUE POWER

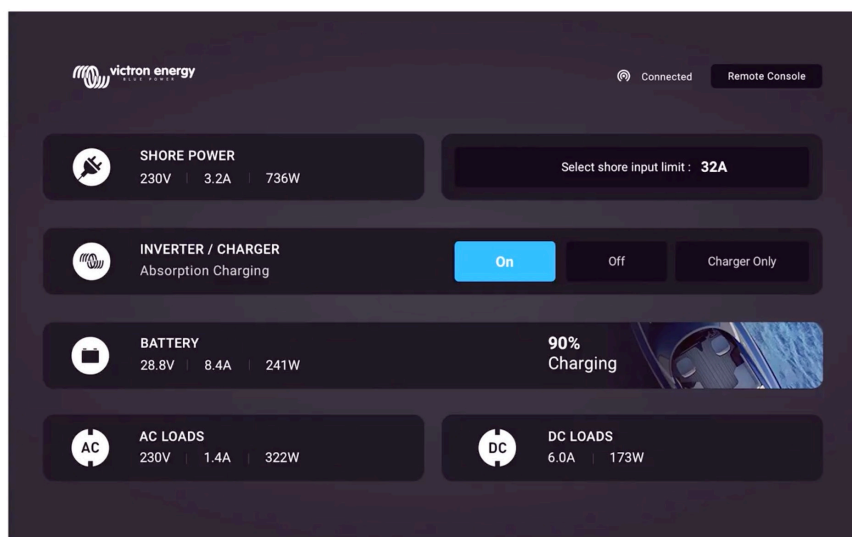


Shore power &  
generator  
information →

Inverter/charger  
information →

Battery information →

Load status →



All information can now be viewed  
on one screen.



From:

<https://www.victronenergy.com/live/> - Victron Energy

Permanent link:

<https://www.victronenergy.com/live/venus-os:mfd-navico?rev=1573640534>

Last update: **2019-11-13 11:22**

