

The CANvu GX is a product in the Victron [GX Product Family](#).

The CANvu GX is a device similar to the Color Control GX. For more information see here: <https://www.victronenergy.com/live/ccgx:start>

**CANvu GX:**

- Data Logger & Control Functions
- Item IP67 All Round Protection
- USB connection



**CANvu GX IO Extender and wiring kit:**

Note; this kit needs to be purchased separately and is always needed. Included in the kit is:

- CANvu GX IO extender
- Power cable
- VE.Can cable
- Ethernet cable

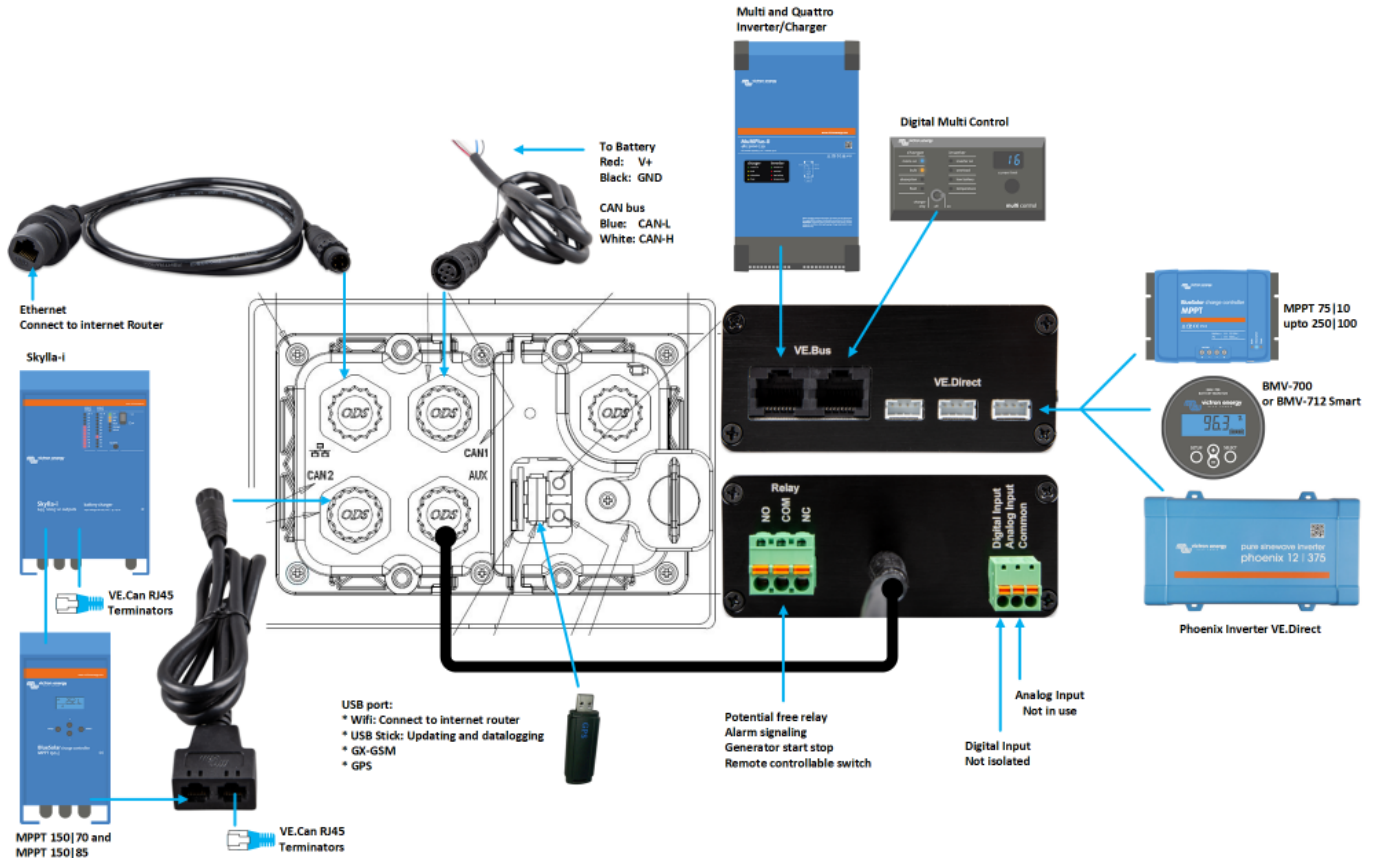


**Features:**

- VE.CAN bus connections

- CAN bus connections not isolated
- VE.Bus connection
- 3x VE.Direct connection
- 1 Analogue input
- 1 Digital input
- 1 Relay output
- 1 Ethernet Port

### Overview of connections



From: <https://www.victronenergy.com/live/> - **Victron Energy**

Permanent link: <https://www.victronenergy.com/live/venus-os:canvu-gx>

Last update: **2019-03-05 11:57**

