

CANvu GX Manual

The CANvu GX is a product in the Victron [GX Product Family](#). You can compare features between the CANvu GX and other GX devices [here](#).

The CANvu GX is a device similar to the Color Control GX, and most of its functionality and features are explained in the Color Control Manual here : <https://www.victronenergy.com/live/ccgx:start>

CANvu GX:

- Data Logger & Control Functions
- Item IP67 All Round Protection
- USB connection



CANvu GX IO Extender and wiring kit:

Note; this kit needs to be purchased separately and is always needed. Included in the kit is:

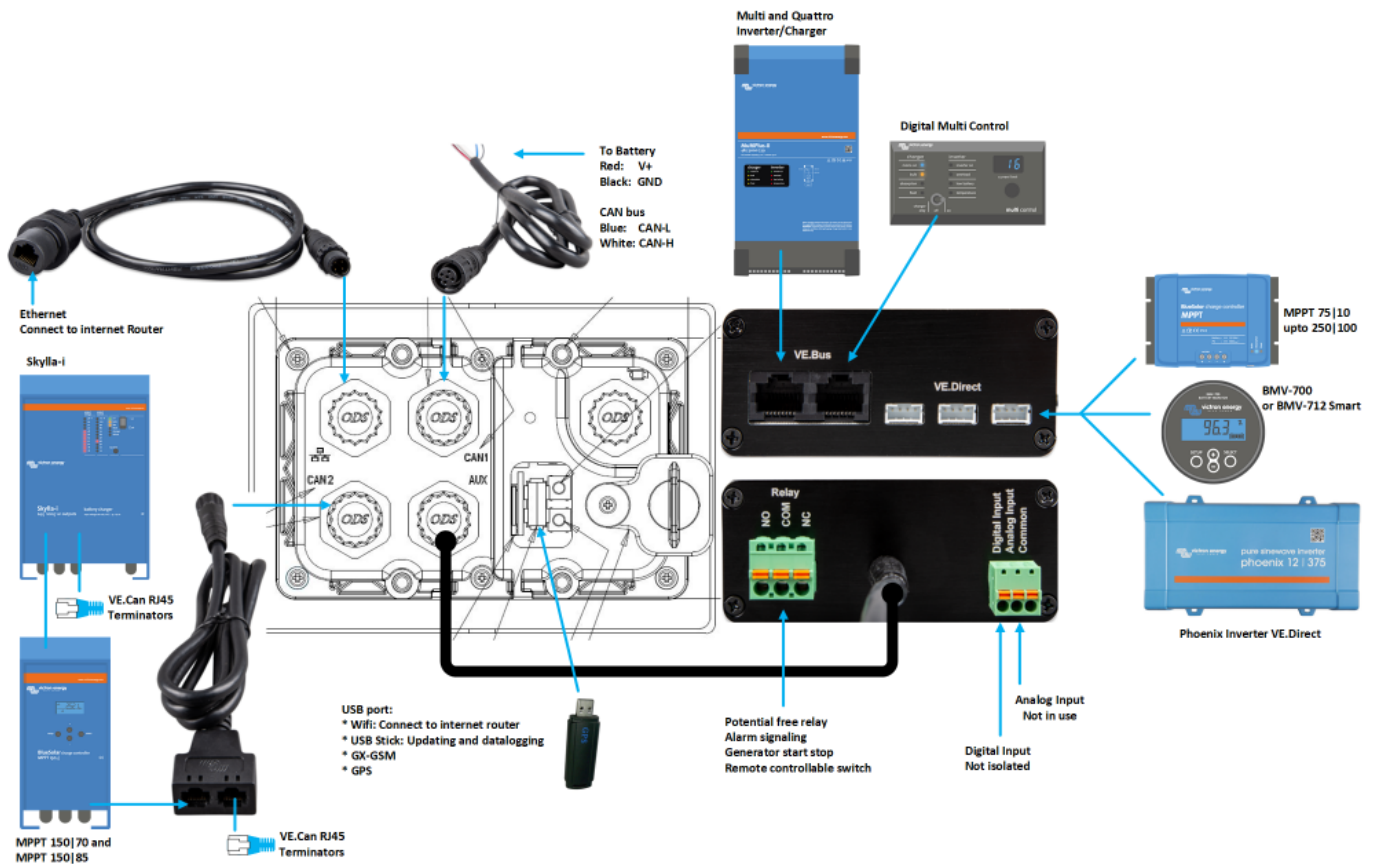
- CANvu GX IO extender
- Power cable (supply voltage 8 - 32 VDC, **48V systems REQUIRE a suitable power supply or 48VDC to 24VDC downconverter!**)
- VE.Can cable
- Ethernet cable



Features:

- VE.CAN bus connections
- CAN bus connections not isolated
- VE.Bus connection
- 3x VE.Direct connection
- 1 Analogue input
- 1 Digital input
- 1 Relay output
- 1 Ethernet Port

Overview of connections



From:
<https://www.victronenergy.com/live/> - **Victron Energy**

Permanent link:
<https://www.victronenergy.com/live/venus-os:canvu-gx>

Last update: **2020-05-13 11:20**

