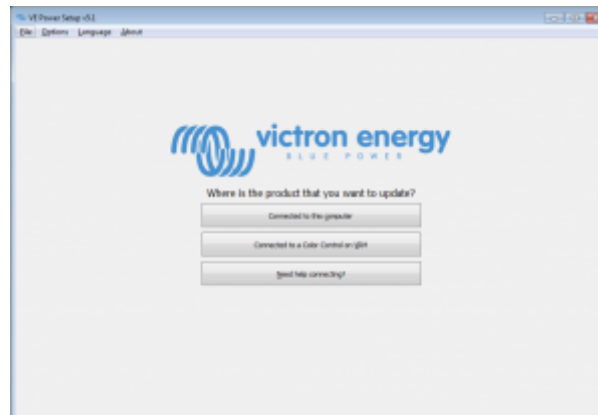


# VE Power Setup



VE Power Setup is a tool to update firmwares locally and remotely, or to remotely perform VE Configure, in conjunction with VEConfig.

You can read about [remote operations possible with VE Power Setup](#).

You can download it on the [software page](#).

## Troubleshooting

### Error "VRM API not responding"

When doing remote operations on a Color Control and you get 'VRM API not responding', it indicates a network or firewall issue. VE Power Setup needs to communicate with the VRM database, which is done by connecting to <https://juice.victronenergy.com/>. There might be a firewall blocking access to it. Your network might also require all traffic to go through a HTTP(s) proxy, which VE Power Setup does not support. Confer with your network administrator if this is the case.

### Error "Problem communicating with two-way communication relay server"

Similar to the 'VRM API not responding'. The relay server, <https://pubsub.pubnub.com/>, is used to connect to the Color Control, despite it being behind a firewall. Access to it might be blocked by a firewall, or your network requires communication to go through a HTTP(s) proxy, which VE Power Setup does not support. Confer with your network administrator if this is the case.

## Windows XP

VE Power Setup runs on Windows XP, but you may have to perform a few manual steps.

- Because Windows XP is no longer maintained by Microsoft, some installations don't have the proper SSL CA certificates installed, so you may need to install them as outlined by the [Global](#)

[Sign website](#). Power Setup needs the following:

- [digicert1.crt](#)
- [digicert2.crt](#)
- [digicert3.crt](#)
- [starfield.crt](#)
- If you get a crash right at start up, you need to install the [Microsoft Visual C 2008 redistributable](#).

## Discussion

~~DISQUS~~

From:

<https://www.victronenergy.com/live/> - **Victron Energy**

Permanent link:

[https://www.victronenergy.com/live/ve\\_power\\_setup?rev=1452268576](https://www.victronenergy.com/live/ve_power_setup?rev=1452268576)

Last update: **2016-01-08 16:56**

