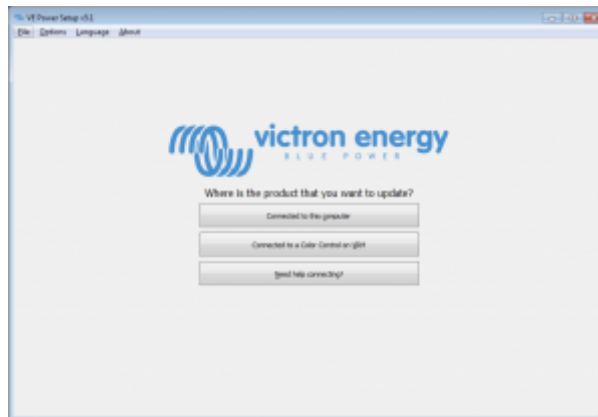


VE Power Setup



VE Power Setup is a tool to update firmwares locally and remotely, or to remotely perform VE Configure, in conjunction with VEConfig.

You can read about [remote operations possible with VE Power Setup](#).

You can download it on the [software page](#).

Troubleshooting

Error "VRM API not responding"

When doing remote operations on a Color Control and you get 'VRM API not responding', it indicates a network or firewall issue. VE Power Setup needs to communicate with the VRM database, which is done by connecting to <https://juice.victronenergy.com/>. There might be a firewall blocking access to it. Your network might also require all traffic to go through a HTTP(s) proxy, which VE Power Setup does not support. Confer with your network administrator if this is the case.

Error "Problem communicating with two-way communication relay server"

Similar to the 'VRM API not responding'. The relay server, <https://pubsub.pubnub.com/>, is used to connect to the Color Control, despite it being behind a firewall. Access to it might be blocked by a firewall, or your network requires communication to go through a HTTP(s) proxy, which VE Power Setup does not support. Confer with your network administrator if this is the case.

Windows XP

VE Power Setup runs on Windows XP, but you may have to perform a few manual steps.

- Because Windows XP is no longer maintained by Microsoft, some installations don't have the proper SSL CA certificates installed, so you may need to install them as outlined by the [Global](#)

Sign website. Power Setup needs the following:

- [digicert1.crt](#)
- [digicert2.crt](#)
- [digicert3.crt](#)
- [starfield.crt](#)
- If you get a crash right at start up, you need to install the [Microsoft Visual C 2008 redistributable](#).

Discussion

~~DISQUS~~

From:

<https://www.victronenergy.com/live/> - **Victron Energy**

Permanent link:

https://www.victronenergy.com/live/ve_power_setup?rev=1446565466

Last update: **2015-11-03 16:44**

