

# Marine Integration Guide

## 1. Introduction

### 1.1 Summary

This guide provides an overview of integrating Victron systems with marine networks. These features include:

- **MFD (Chart Plotter) Monitoring:** Compatible with Garmin, Raymarine, Furuno, and the Navico brands B&G, Simrad, and Lowrance.
- **Tank Level Monitoring:** Seamlessly integrate tank level data between the NMEA 2000 network, Victron GX devices and the VRM Portal.
- **NMEA2000-out feature:** Share tank data, as well as other data such as Battery, DC & AC system data from GX devices to the NMEA 2000 network.
- **GPS Integration:** GX devices can read GPS data (e.g., location, speed) from NMEA 2000 but do not output GPS data to the network.
- **Advanced features powered by Signal K:** Includes wireless AIS, anchor alarms, and automatic trip logging.

This document serves as a high-level overview with links to relevant manuals for detailed setup instructions.

### 1.2 MFD Integration

Integration with MFDs depends on customer requirements and equipment used. A GX device (e.g., Cerbo GX or Ekrano GX) is typically involved, with two main options:

1. **NMEA 2000 Integration:** Connect the GX device directly to the NMEA 2000 network.
2. **HTML5 App Integration:** Connect the GX device and MFD via Ethernet to enable Garmin OneHelm or Raymarine LightHouse Apps.

#### Comparison of Options:

1. **NMEA 2000:** Offers customizable data pages on the MFD but requires more configuration.
2. **HTML5 App:** Plug-and-play with an auto-configured system overview but less customizable.

#### Illustration:



- Right bar: NMEA 2000 data.
- Bottom: HTML5 App integration.

### Further reading by brand

- [Garmin integration details](#)
- [Raymarine integration details](#)
- [Furuno integration details](#)
- [Navico integration details](#)

### 1.3 Tank monitoring

The Victron GX devices offer a user-friendly **Tank Level Page** to centralize and visualize data, as well as integration with MFDs and the NMEA 2000 network.

#### Key Features:

- Monitor tank levels on the GX device and VRM Portal.
- Access NMEA 2000 tank data or share GX tank data with NMEA 2000.
- Customize tank naming, shapes, and damping for accurate readings.
- Expand capabilities with the [GX Tank 140](#) module for voltage (0-10V) or current (4-20mA) inputs.

#### Visual Examples:

# Brief Page - tank level volumes (litres) or percentages

On the brief page, you can chose to the tank level as a percentage or in the chosen unit of volume, typically set to litres.

Set the preference in the Settings -> Display & Language -> Brief view levels -> Brief view unit menu.



# Systems with multiple tanks of the same type

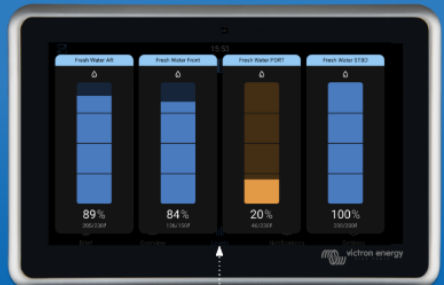
For larger systems with many tanks, those of the same type are grouped together. This not only optimises screen space but also provides a clear overview of the total fresh water or diesel levels.

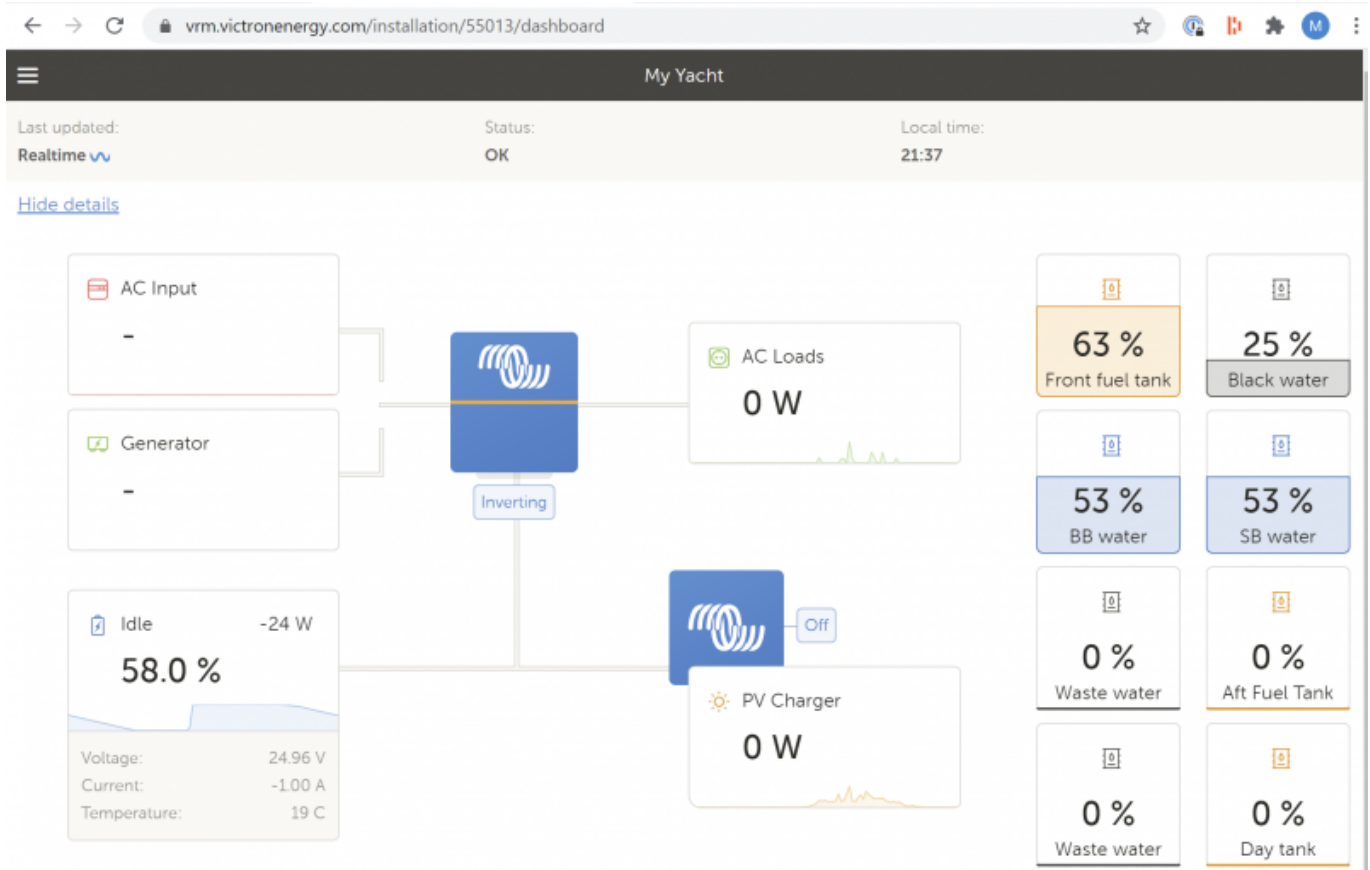


The total tank levels are displayed on the Brief view, which is particularly useful for systems with multiple tanks of the same type.



The view will automatically group tanks of the same type in case the system has so many tanks that they don't all fit on the screen individually.





### Video that demonstrates the tank page on the GX



## Video

### Further details

- **Resistive tank level inputs built-in to the Cerbo GX and Ekrano GX:** See <https://www.victronenergy.com/live/venus-os:start:the GX product page> for details on the built-in tank inputs.
- **Reading data from NMEA 2000 Tank senders into the GX Device and VRM Portal:** The GX device can read tank level data from compatible sensors on the NMEA 2000 network. This information is then displayed on the GX interface, including the dedicated tank level page, and synced with the VRM Portal. For compatibility details, see [the 3rd party NMEA 2000 tank sender](#)

[section in a GX manual](#).

- **Transmitting GX tank levels to the NMEA 2000 network:** For vessels with advanced monitoring setups, the GX device can also send tank data back to the NMEA 2000 network, enabling MFDs and other connected devices to access and display the information. For further information, see the [MFD integration by NMEA 2000 chapter in the GX manual](#). Note that the manual includes specific steps for Garmin, Raymarine, Furuno and Navico systems.

## 1.4 NMEA2000-out feature

Victron Energy GX devices feature an NMEA 2000-out function: when enabled, the GX device acts as a bridge: it makes the data of all connected Battery monitors, Inverter/chargers, as well as other products connected to the GX device, available on the NMEA 2000 network.

Using that feature, and having the GX device connected a NMEA 2000 network, Marine MFDs can read this data and visualise it to the user. Often in a highly configurable manner.

## 1.5 Advanced features powered by Signal K

Signal K unlocks powerful features:

- **Wireless AIS & Navigation Data:** Share NMEA 2000 data via WiFi for apps like Navionics.
- **Anchor Alarm:** Reliable and easy-to-use alarm.
- **Automatic Logbook:** Track journeys effortlessly.

More details:

1. [Venus OS Large manual](#).
2. [Victron Cerbo GX on steroids blog post](#).

## 1.5 Modbus-TCP, mostly for SCADA systems

Ideal for larger vessels, the GX built-in Modbus-TCP server enables SCADA system integration. For more details, see the [Modbus-TCP FAQ](#).

# 2. Integration details by Victron product

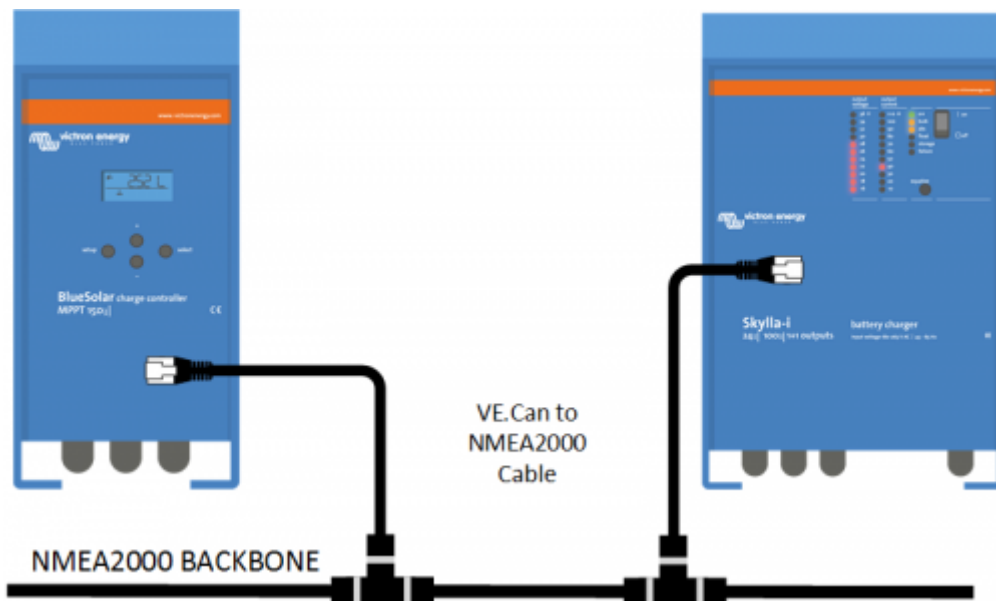
## 2.1 Systems with a GX Device

For most installations and integrations, it will be best to use one of our [GX Products](#). It acts as a hub, collecting information from connected equipment, such as Inverters, Battery Monitors and Chargers; and then making them available to the MFD.

## 2.2 Other products featuring a VE.Can port

All Victron products that feature a VE.Can port can be directly connected to the NMEA 2000 network, using the [VE.Can to NMEA 2000 cable](#).

- Skylla-i 24V Battery Chargers
- Skylla IP65 Battery Chargers
- Lynx Shunt VE.Can Battery Monitor
- Lynx Smart BMS
- SmartSolar MPPT Solar Chargers with VE.Can communications port
- Multi RS
- Inverter RS



### 2.3 VE.Bus and VE.Direct to NMEA 2000 interfaces (DEPRECATED!)

- [VE.Bus to NMEA 2000 interface](#)
- [VE.Direct to NMEA 2000 interface](#), for BMV Battery Monitors (only).

Note that the use of both those interfaces is deprecated. Use a GX device instead.

## 3. NMEA 2000 Details

### 3.1 PGN Lists

Refer to our [Datacommunication whitepaper](#), page 8 and beyond, for a list of Victron products and their supported PGNs.

### 3.2 NMEA 2000 instances

Instances are used in an NMEA 2000 network to identify multiple similar products connected to the same network.

As an example, take a system with two battery monitors (one for the main battery bank, and another for the hydraulic-thruster bank) and also a Quattro inverter/charger. All three of those devices will send their battery voltage measurements out on the NMEA 2000 network. For the displays to show these values at the right place, they need to know which voltage belongs to what battery. That is what instances are for.

There are various types of instances, and for marine systems are two that matter: the Device instance and the Data instance. The Data instance goes by various different names, like Fluid instance, Battery instance and DC instance.

NMEA 2000 defines three different instances:

- Data instances (Battery instance, Fluid instance, and similar)
- Device instance
- System instance

### When is manual configuration of instances needed?

- For **Garmin, Furuno, Maretron and Navico (B&G, Lowrance, Simrad) systems**: no configuration needed. Required fields can be configured and selected on the MFD, usually by pressing and holding on a data field in the data bar until the selection pane comes up.
- For **Raymarine**, before selecting the data on the MFD, the Battery and DC Detailed instance typically needs to be set up to be unique. For details, see the [GX manual, Raymarine section](#).

Further information about instances in general is available in the [the NMEA 2000 chapter in the GX manual](#).

## 3.3 Terminators and network layout

A NMEA 2000 CAN-bus network needs to be laid out as in a backbone configuration, using drop cables to connect to each device. Also, there should be only two terminators in the network. Therefore:

- Use the NMEA 2000 cable as the backbone.
- Run a separate drop cable separately to each Victron device [VE.Can to NMEA 2000 cable](#)
- Only terminate the NMEA 2000 backbone. Do not install a terminator in any of the VE.Can ports on the Victron products.

Or:

- Have the NMEA 2000 network on one side, with one terminator. On the other end, change to the Victron network, with also one (Victron) terminator at the end.

The first option is more aligned with the official NMEA 2000 method. But, in case of multiple Victron products that need to be connected to the NMEA 2000 network, will require more wire runs and definitively more NMEA 2000 to VE.Can conversion cables.

## 3.4 DC Voltage compatibility

The Victron VE.Can network accepts 9 to 70VDC.

The NMEA-2000 network used to be 9 to 16VDC, which is, or will be, expanded to also include 24V. Which means that some NMEA-2000 devices are 9 to 16VDC, some are 9 to 30VDC, and some allow higher voltages.

Also, the Victron VE.Can network will (in most cases) be powered with battery voltage. So for a 48V system, the voltage on the VE.Can network **exceeds** the NMEA-2000 accepted voltage levels.

Therefore, it is important to **not** connect those power cables.

The Victron cable used to connect both networks together, the [VE.Can to NMEA 2000 cable](#), has a removable fuse which is to be removed in case separation is necessary. A printed warning label is attached to the cable to warn about this.

### 3.5 Galvanic isolation

When connecting a GX to an NMEA 2000 network, it is recommend to do so using a galvanically isolated CAN-Bus port.

This is especially the case when your NMEA backbone and GX are powered from separate power sources or do not share a common ground. These are the two most popular models that feature such galvanically isolated port:

- Cerbo GX MK2 (launched in 2024 as a successor to the Cerbo GX which did not feature an isolated port)
- Ekrano GX

On both above products, VE.Can port 1 has galvanic isolation. VE.Can port 2 does not.

For a full list of which ports feature isolation, see [this document](#).

### 3.6 Further reading on Victron and NMEA 2000

- [Data communication white paper](#)
- [Cerbo GX manual, NMEA 2000 chapter](#)
- [NMEA 2000 related discussions on Victron Community](#)

## 4. Maretron

All data sent out by Victron devices on the NMEA 2000 network can be picked up by the Maretron MFDs & software. See the [Maretron N2KView® vessel monitoring and control software](#).

## 5. FAQ

**Q1: Can or must both Ethernet and and NMEA 2000 connection be made between Victron**

## GX and MFD?

Both can be made at the same time.

Ethernet is needed to get the MFD App, as explained above.

And an NMEA 2000 connection is needed to get data to show in other fields on the MFD.

See annotated screenshot above for which is what.

From:

<https://www.victronenergy.com/live/> - **Victron Energy**

Permanent link:

<https://www.victronenergy.com/live/ve.can:nmea-2000:start?rev=1737627979>

Last update: **2025-01-23 11:26**

