

# Changing NMEA2000 instances

## 1. Introduction

Instances are used in an NMEA2000 network to identify multiple similar products connected on the same network.

As an example, take a system with two battery monitors (one for the main battery bank, and another for the hydraulic-thruster bank) and also a Quattro inverter/charger. All three of those devices will send their battery voltage measurements out on the canbus.

For the displays to show these values at the right place, they need to know which voltage belongs to what battery.

### How can I change the instances?

This document describes three options:

1. Use [Actisense](#) software & hardware. Can change both the device- and data-instances
2. Use [Maretron](#) software & hardware.
3. From the [commandline](#) of a [GX device](#). Note that this is a software developer trick. Not for any day use.

### Device instance vs the data instances

There are two types of instances: device instances and data instances. And depending on the make and model of the displays being used (Garmin, Maretron, Raymarine, etcetera), you need to change one of them or both.

Both the device instance and the data instance of a product can easily be changed with both Maretron N2Kview as well as and Actisense PC software.

### Required hardware

Changing the device instance requires an usb-canbus adapter to link the CAN-bus network to your computer:

- For Actisense, see the [Actisense NGT-1](#)
- For Maretron, see their [USB100](#)

### Related information

For more detailed information, see also the FAQ in our [Data communication whitepaper](#).

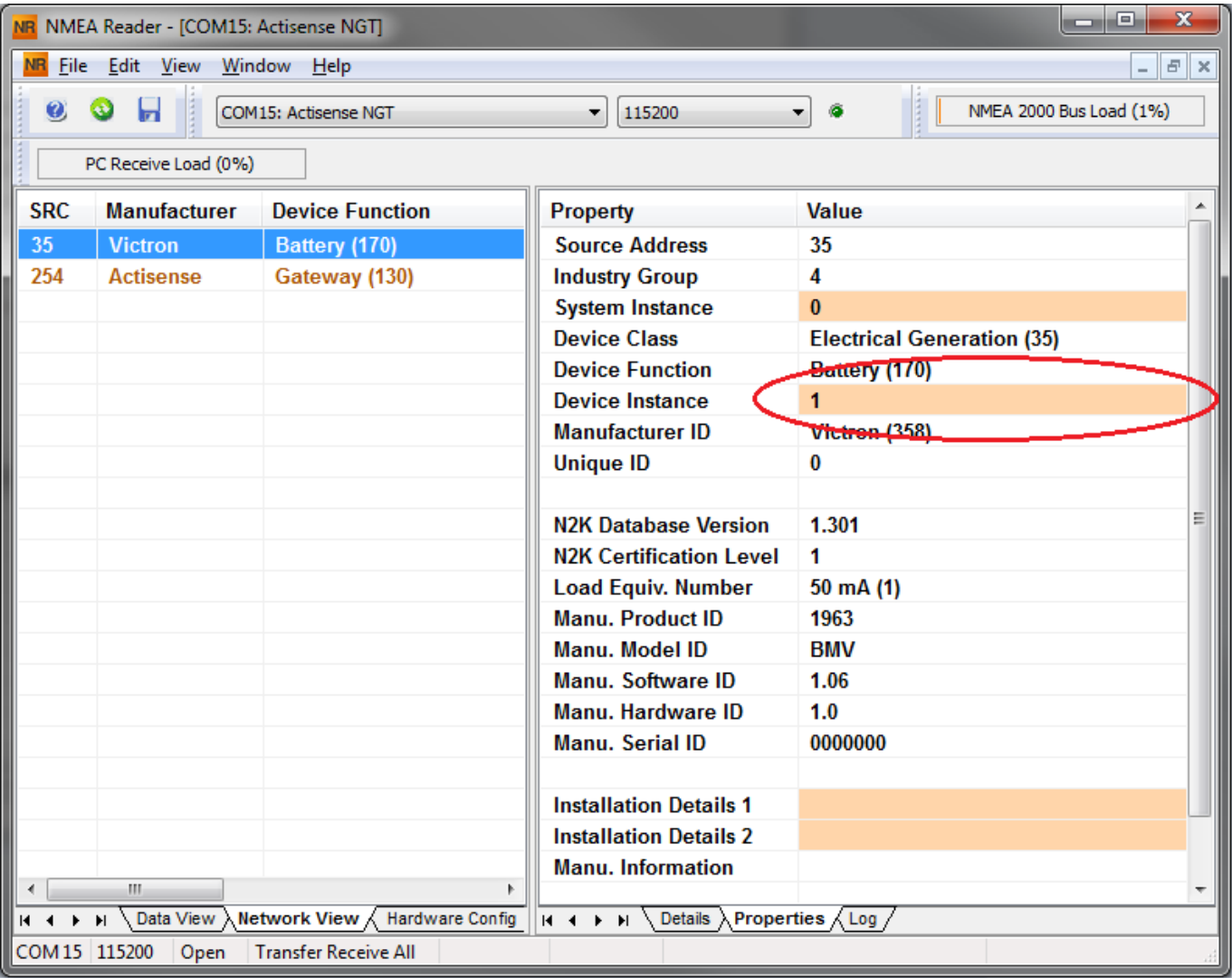
And the main [NMEA2000 integration guide](#).

## 2. Changing the device instance with Actisense

Note: make sure to use a recent Actisense driver. Otherwise the instance might not ‘stick’.

Changing a device instance:

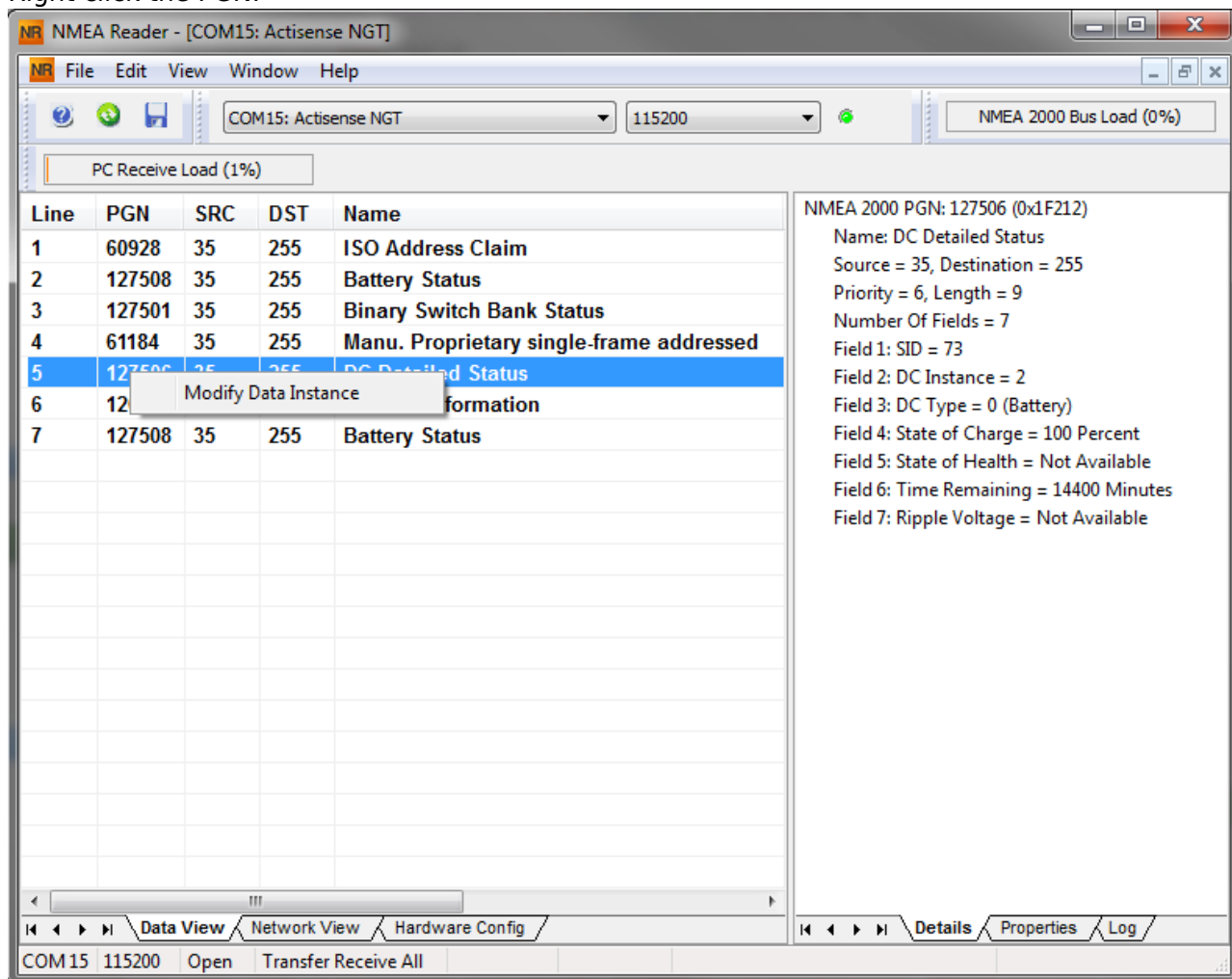
- 1. Open Actisense NMEA Reader
- 2. Select the network view (tab selection is at the bottom left)
- 3. Select the product whose device instance you want to change
- 4. Select the properties tab at the bottom right and change the device instance



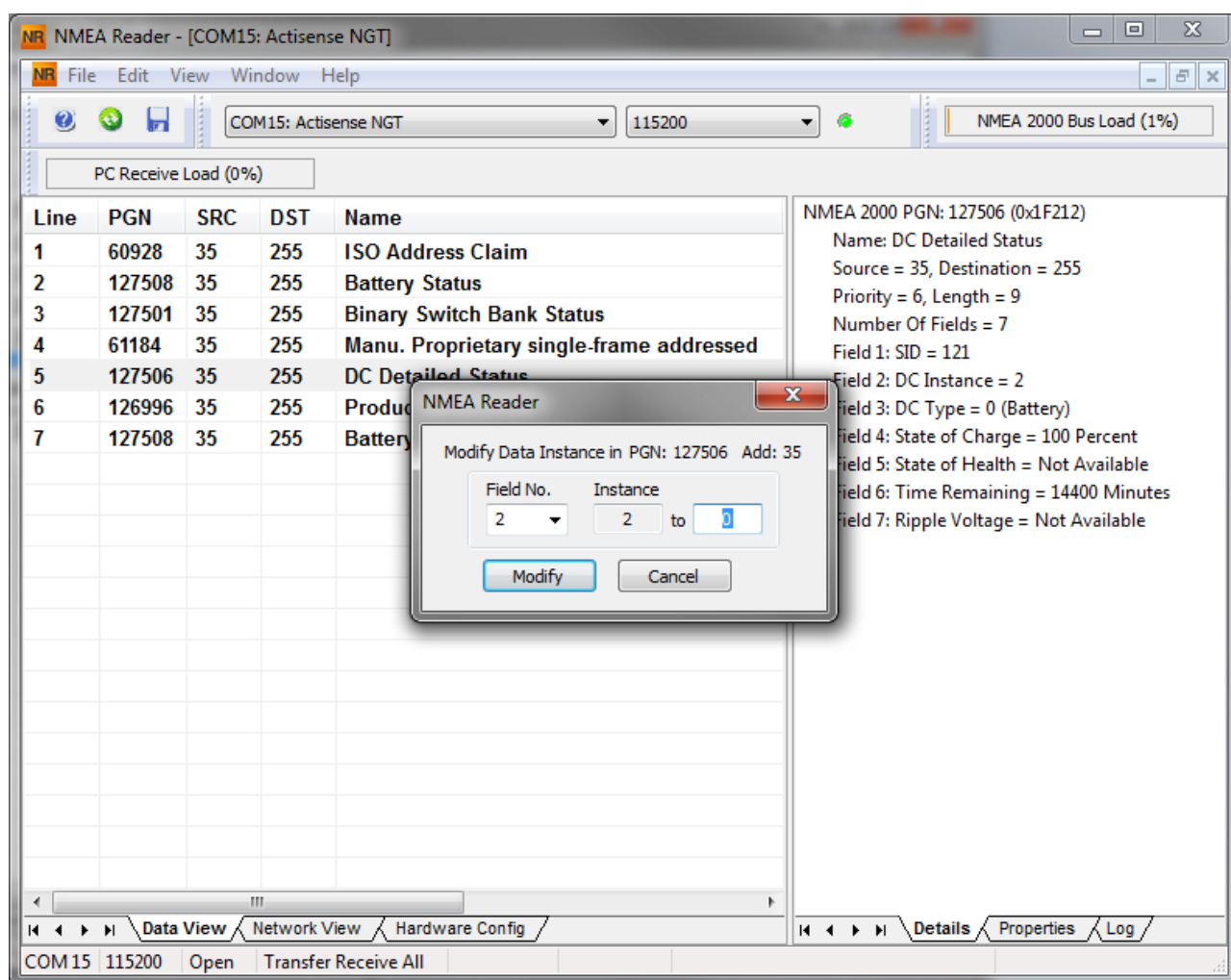
## 3. Changing a data instance with Actisense

Changing a data instance:

1. Open Actisense NMEA Reader
2. Select data view (tab selection is at the bottom left)
3. Right click the PGN:



4. And change the value:



Notes for BMVs, Lynx Shunt and the Lynx Ion + Shunt:

- The Battery Instance and the DC Detailed instance are the same value. Changing one of them, will also change the other one.
- Since the BMV sends out two voltages, the main voltage and the aux- or starter-voltage, it comes preconfigured with two battery instances: 0 and 1. When you want to change that to 1 and 2, change the 1 into 2 first, and then the 0 into 1, as they cannot be the same.

## 4. Changing Instance Using Maretron N2KAnalyzer

Maretron understands that it is sometimes difficult to know whether a particular product uses device instance or if it uses data instance to uniquely identify itself on an NMEA 2000 network. For this reason, Maretron uses a term called “Unique Instance” where the N2KAnalyzer software tool automatically determines if a particular device uses device or data instances.

Open N2KAnalyzer and make sure that the “Unique Instance” column is turned on (i.e. checked) using the Setup>Columns menu item.

The screenshot shows the Maretron N2KAnalyzer software interface. The 'Setup' menu is open, and the 'Columns' option is selected. The 'Unique Instance Column' is highlighted in the main table. The table lists various NMEA2000 devices with columns for ID, Mfg Model Version, Mfg Serial Number, Unique Instance, Label, Current Software, Available Software, Installation Description #1, Device Instance, NMEA 2000 Version, NMEA 2000 Certification Level, and LEN. A red circle highlights the 'Unique Instance' column header, and another red circle highlights the 'Unique Instance' cell for device ID 44. The 'Columns' menu is also open, showing a list of columns to be displayed.

ID	Mfg Model Version	Mfg Serial Number	Unique Instance	Label	Current Software	Available Software	Installation Description #1	Device Instance	NMEA 2000 Version	NMEA 2000 Certification Level	LEN
44	161-1-02...	11002103	2		4.000.4.001	-	Sea water temp	2	1.300	B	1
	Rev D	327681	64		1.11	-	AC Panel Load Sh...	64	1.200	B	2
	Rev F	131120	32		1.5	-	DC breakers 16x30...	32	1.200	B	1
			1		V01.0.1	-		1	1.200	A	7
					2.40	-		3	1.210	B	3
					1.0.0 SO3653	-		5	0.001	B	1
					2.0.0.4	3.0.3.1	Connected Aft Bus	1	2.000	A	4
					1.4.17.5	1.6.6.3		1	2.000	A	13
					1.0.8.2	1.0.9.2	Main A/C Bus A	0	1.301	A	1
					1.0.13.2	1.2.1.1	Maker	0	1.301	A	3
					5.0.3	5.0.4.1	Midship	0	1.210	A	3
					1.6.13.0	2.3.0.1	Backup 1	2	1.210	A	3
					1.1.6	1.1.8.3	Board Water	0	1.301	B	2
					1.1.6	1.1.8.3	Tender Gasoline T...	0	1.301	B	2
					2.0.13	2.0.13	id Sensor	0	1.210	A	3
					1.003.1.022	-	Port Sounder	0	1.300	B	4
					1.0.6	1.0.6	Engine Room	6	1.301	A	2
					3.5	3.7.1.1	Primary GPS Ante...	0	1.301	A	3
					1.0.4	1.0.5.2	System Power	2	1.210	A	1
					1.1.6	1.1.8.3	Tank	0	1.301	B	2
					1.8.3b1	1.8.6.2	Connected to Hel...	1	1.210	A	3
					1.1.1	1.1.2.7	Ship's Inside Tem...	0	1.210	A	1

Within the N2KAnalyzer main window, any cell with a white background can be edited by clicking in the cell and typing in the desired value. You can see from the following screen shot that a few parameters have a white background including Label and Installation Description #1. To change a device's instance, click in the Unique Instance cell for the device you want to change and type the new number followed by a carriage return. If the particular product accepts the instance change, you will see the new instance number reflected in the cell. You can also use a tool within N2KAnalyzer to check that all products on the network are uniquely instanced. Use the Analyze>Instancing menu to verify correct overall system instancing.





Step 2. Change it, for example, to 4:

```
root@ccgx:~# dbus -y com.victronenergy.charger.socketcan_can0_di0_uc12983  
/DeviceInstance SetValue %4  
retval = 0
```

Step 3. Wait a few seconds, and double check:

```
root@ccgx:~# dbus -y  
com.victronenergy.bms.socketcan_can0_di0_uc10  
com.victronenergy.charger.socketcan_can0_di4_uc12983
```

Device instance changed successful!

## DISQUS

~~DISQUS~~

From:

<https://www.victronenergy.com/live/> - Victron Energy

Permanent link:

[https://www.victronenergy.com/live/ve.can:changing\\_nmea2000\\_instances?rev=1565864224](https://www.victronenergy.com/live/ve.can:changing_nmea2000_instances?rev=1565864224)

Last update: **2019-08-15 12:17**

