

# Changing NMEA2000 instances

## 1. Introduction

### 1.1 Purpose of NMEA 2000 instances

Instances are used in an NMEA 2000 network to identify multiple similar products connected on the same network.

As an example, take a system with two battery monitors (one for the main battery bank, and another for the hydraulic-thruster bank) and also a Quattro inverter/charger. All three of those devices will send their battery voltage measurements out on the N2K network. For the displays to show these values at the right place, they need to know which voltage belongs to what battery. That is what instances are for.

### 1.2 Different types of instances

There various types of instances, and for marine systems are two that matter: the Device instance and the Data instance. Details and differences of each type are explained in detail in the [Cerbo GX manual, NMEA 2000 chapter](#).

**WARNING:** whilst it is possible to change the data instances, changing them on a Victron devices will render that device impossible to read correctly by other Victron devices. For example, changing the data instances on a Skylla-i will cause it to either not at all or not completely be visible on a GX device.

### 1.3 Recommend instancing setup for main MFD brands

Not all MFDs use instances the same. Some do not require setting up instances at all, others require to change the Device-instance and yet other brands require unique data instances or both.

Below documents explain the details for all major brands. Besides details on the required instancing; it also contains notes about supported, as well as non-supported, PGNs.

- [NMEA 2000 configuration for Raymarine](#)
- [NMEA 2000 configuration for Garmin](#)
- [NMEA 2000 configuration for Furuno](#)
- [NMEA 2000 configuration for Navico \(B&G, Simrad and Lowrance\)](#)

### 1.4 Different methods for setting up instances

As the NMEA2000 protocol prescribes commands to change an instance by sending commands to a device, there are various ways of changing instances. The purpose of this document is to describe all commonly used methods.

Besides the here described methods there are more, for example some MFDs allow changing instances as well.

1. GX Device: Device- instances only
2. Actisense software + NGT-1 USB: Device- as well as data-instances
3. Maretron software + USB adapter: Unknown
4. Commandline of a [GX device](#): Device- as well as data-instances. Note that this required advanced Linux skills; and is listed here only for benefit of experienced software developers

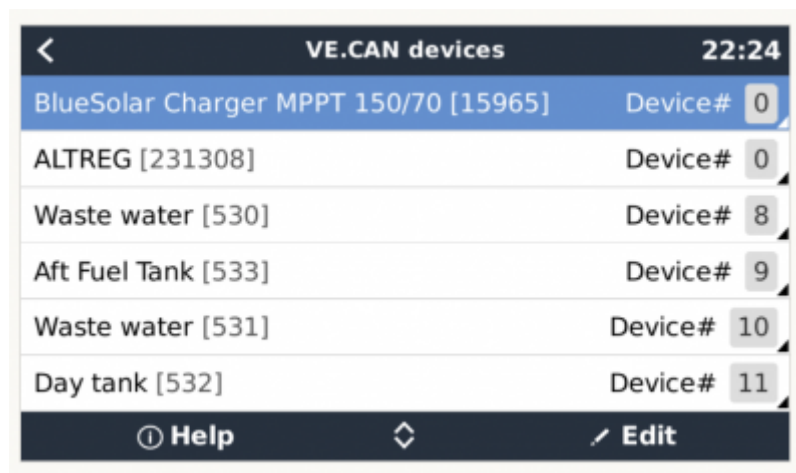
Chapter 2, 3, 4, 5 and 6 explain these methods in detail.

## 1.5 Further reading on Victron and NMEA 2000

- [NMEA 2000 & MFD integration guide](#)
- [Data communication white paper](#)
- [Cerbo GX manual, NMEA 2000 chapter](#)
- [NMEA2000 related discussions on Victron Community](#)

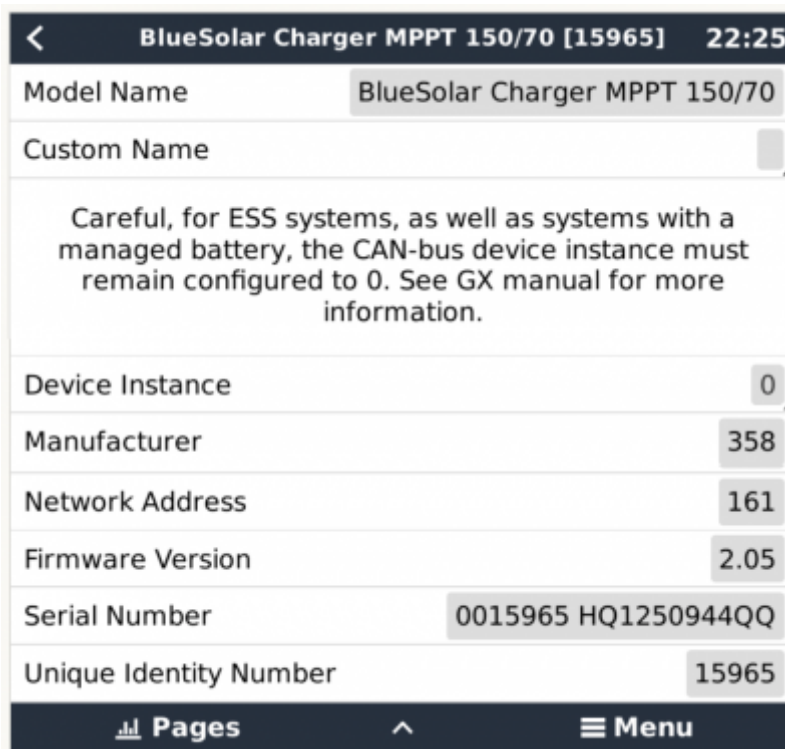
## 2. GX Device: changing device instances

The Settings → Services → VE.Can → Devices menu shows a list of all devices on the N2K / VE.Can network:



VE.CAN devices		22:24
BlueSolar Charger MPPT 150/70 [15965]	Device#	0
ALTREG [231308]	Device#	0
Waste water [530]	Device#	8
Aft Fuel Tank [533]	Device#	9
Waste water [531]	Device#	10
Day tank [532]	Device#	11

By clicking the right button, a detailed menu is shown:



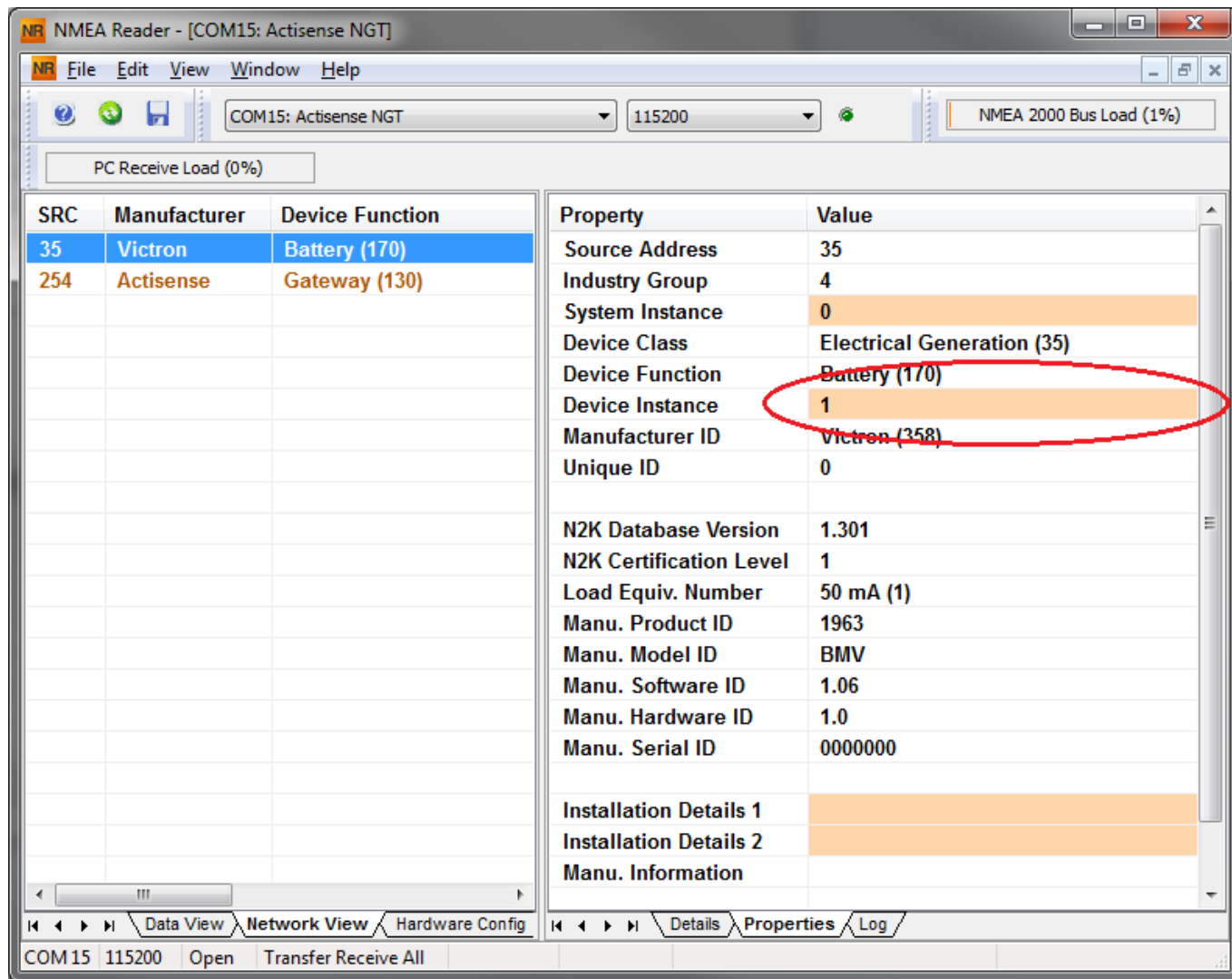
### 3. Actisense: changing device instances

Note: make sure to use a recent Actisense driver. Otherwise the instance might not 'stick'.

Requires the [Actisense NGT-1](#).

Changing a device instance:

1. Open Actisense NMEA Reader
2. Select the network view (tab selection is at the bottom left)
3. Select the product whose device instance you want to change
4. Select the properties tab at the bottom right and change the device instance

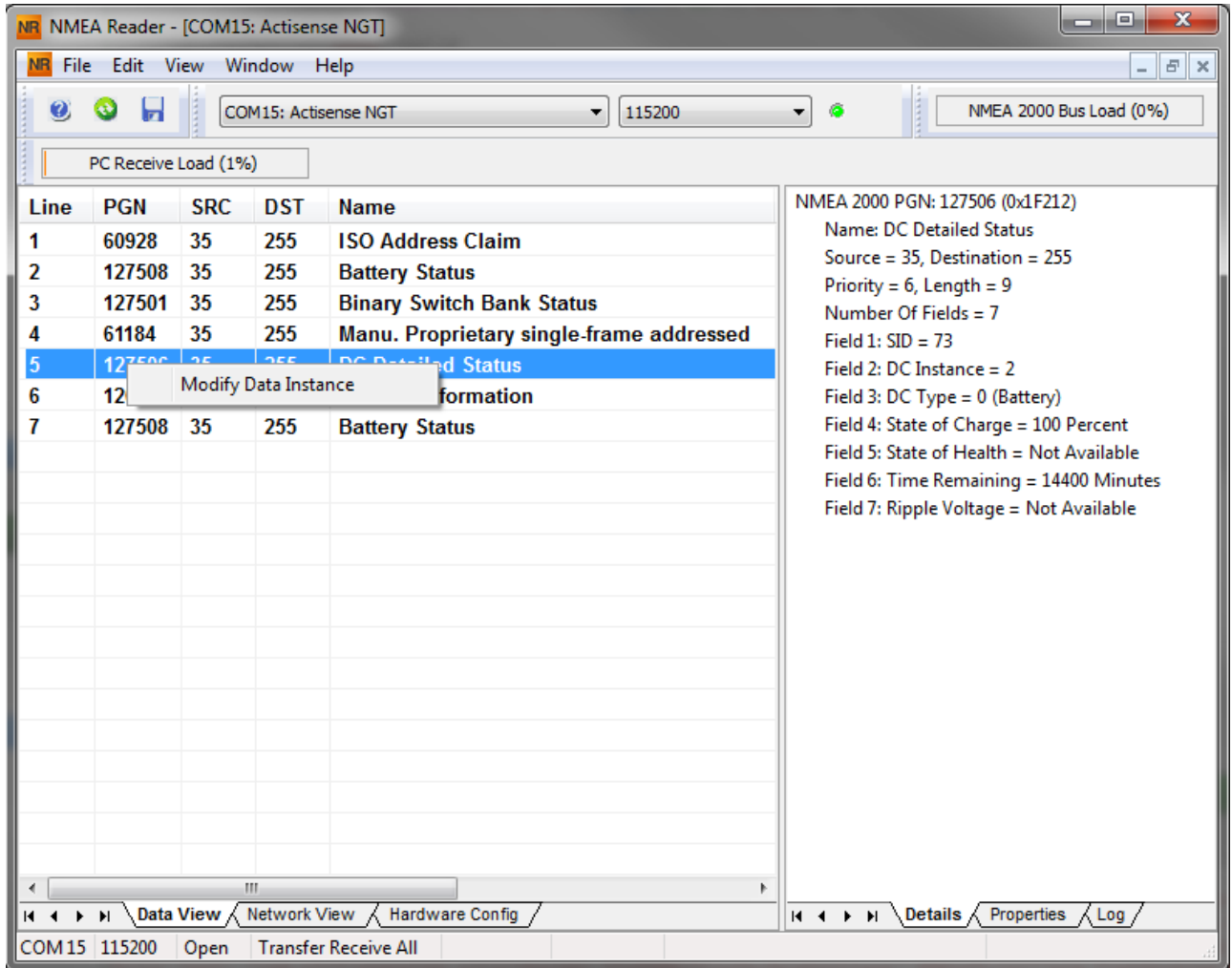


## 4. Actisense: changing data instances

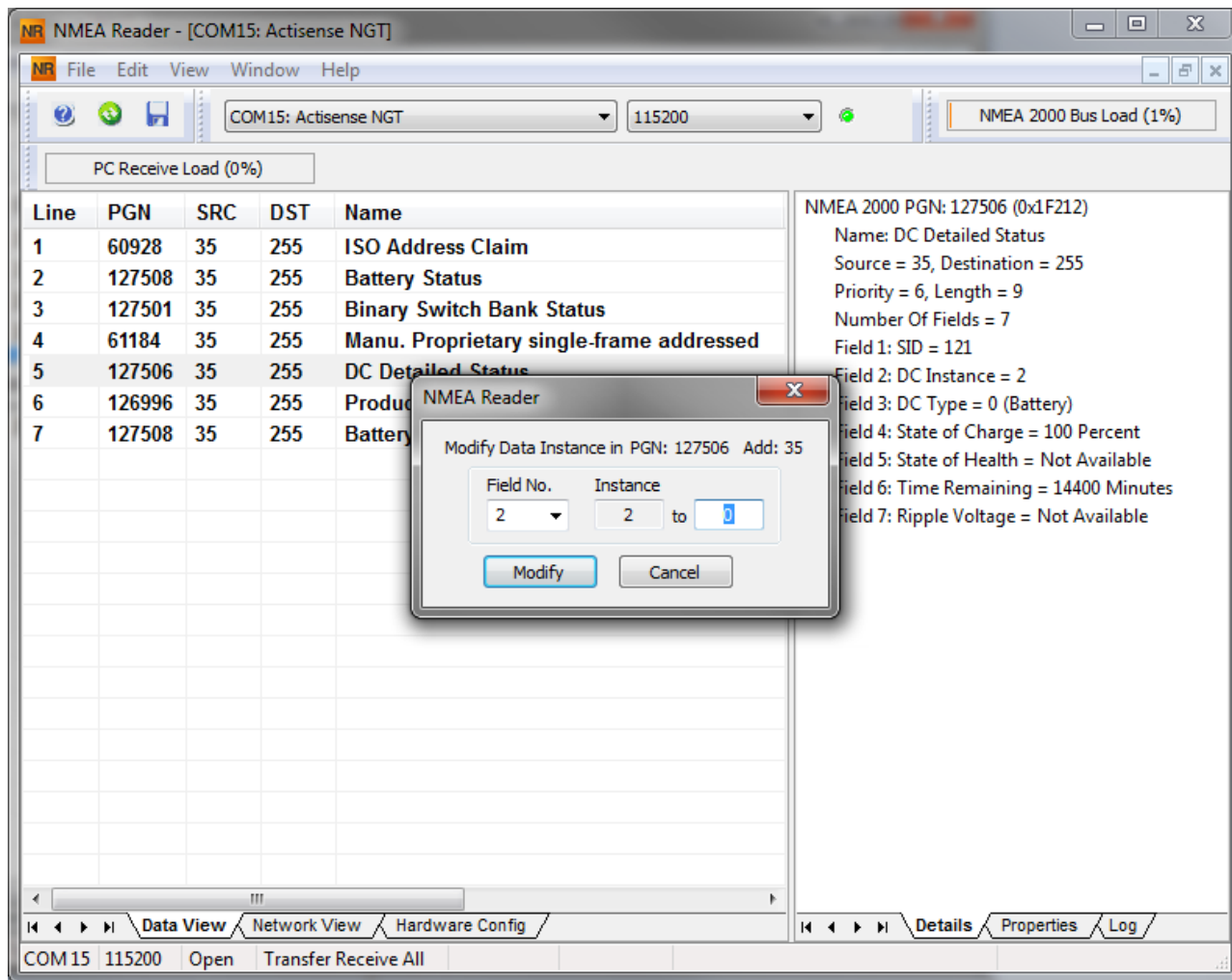
Requires the [Actisense NGT-1](#).

Changing a data instance:

1. Open Actisense NMEA Reader
2. Select data view (tab selection is at the bottom left)
3. Right click on the PGN number. Note that this will only work on PGNs that allow changing their data instance:



4. And change the value:



Notes for BMVs, Lynx Shunt and the Lynx Ion + Shunt:

- The Battery Instance and the DC Detailed instance are the same value. Changing one of them, will also change the other one.
- Since the BMV sends out two voltages, the main voltage and the aux- or starter-voltage, it comes preconfigured with two battery instances: 0 and 1. When you want to change that to 1 and 2, change the 1 into 2 first, and then the 0 into 1, as they cannot be the same.

## 5. Maretron N2KAnalyzer

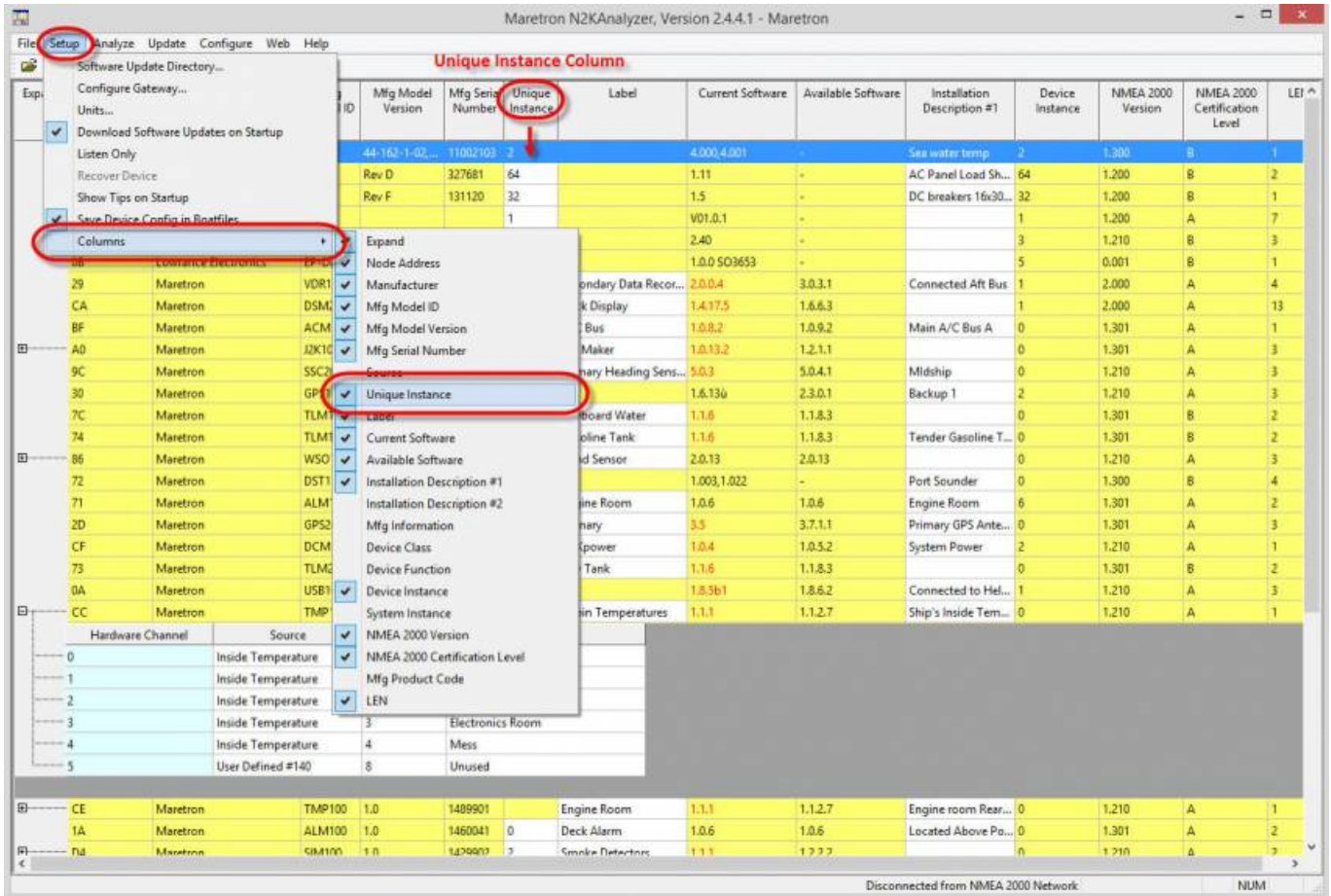
Maretron uses a term called “Unique Instance” where the N2KAnalyzer software tool automatically determines if a particular device uses device or data instances.

WARNING: At Victron we do not understand what and how the Maretron software works with regards to this. We advise to use another tool, not Maretron, so that you know what you are doing, ie know what instance you are changing. So far, we have not been able to use Maretron software to change a data instance. And changing the other instance, the device instance can also be done straight from the Victron GX device its user interface. To change a data instance, for example to fix instance conflicts as reported by the Maretron software, we recommend to use Actisense. Not Maretron.

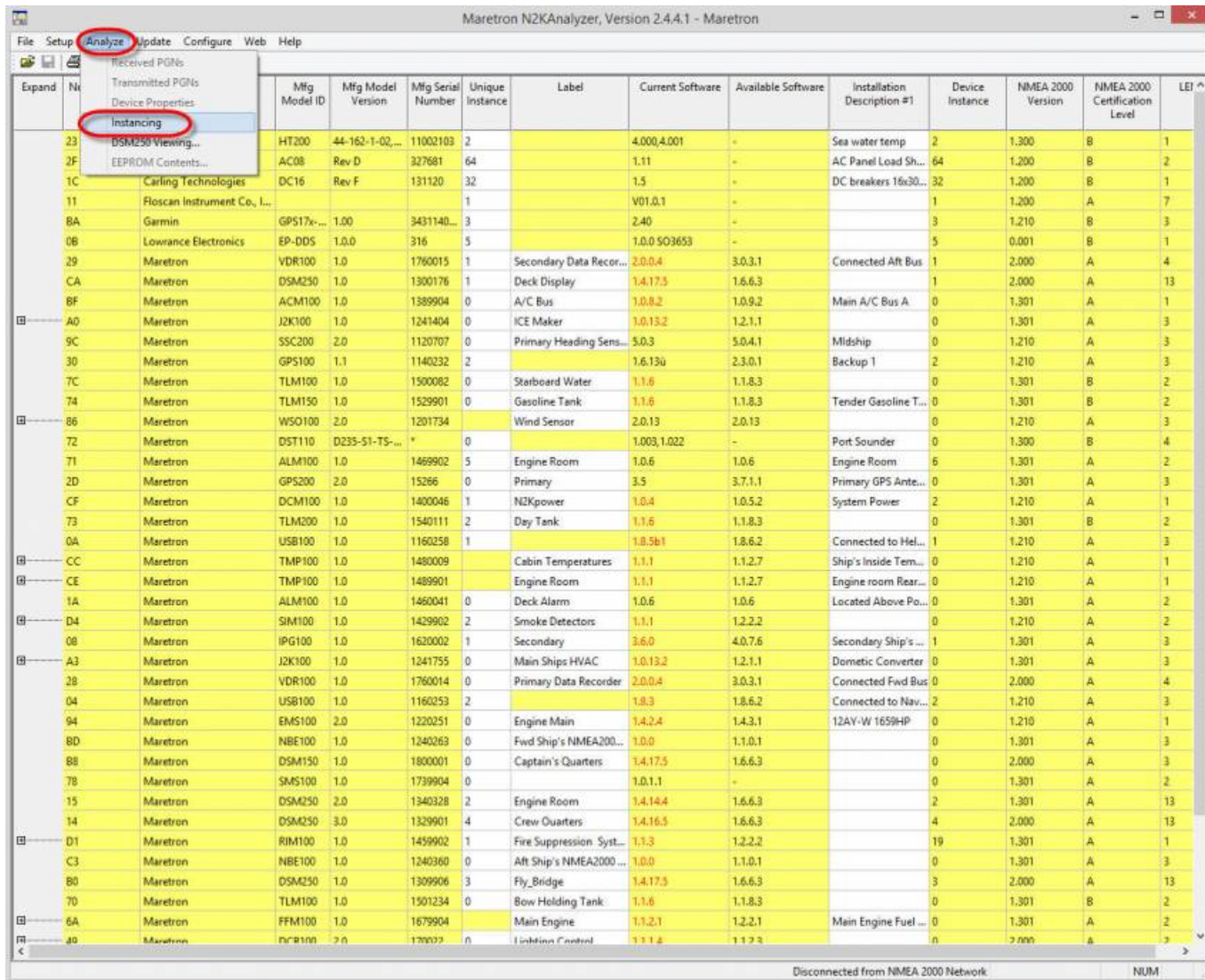
This procedure requires a Maretron USB adapter.

Open N2KAnalyzer and make sure that the “Unique Instance” column is turned on (i.e. checked) using

the Setup>Columns menu item.



Within the N2KAnalyzer main window, any cell with a white background can be edited by clicking in the cell and typing in the desired value. You can see from the following screen shot that a few parameters have a white background including Label and Installation Description #1. To change a devices instance, click in the Unique Instance cell for the device you want to change and type the new number followed by a carriage return. If the particular products accepts the instance change, you will see the new instance number reflected in the cell. You can also use a tool within N2KAnalyzer to check that all products on the network are uniquely instanced. Use the Analyze>Instancing menu to verify correct overall system instancing.



## 6. Changing the instances from the GX command line

### 6.1 Introduction

Instead of using Actisense or Maretron software, it is also possible to change the VE.Can aka N2K Device instance from the GX Device shell. To get root access, follow these instructions: [Venus OS: Root Access](#).

Once logged into the shell, follow below instructions. More back ground information of the used commands such as dbus and dbus-spy is found by reading about root access document.

### 6.2 Warning: better use an Actisense!

Note that the methods explained in this Chapter 6 are usually not recommended. Use an Actisense instead, see chapters 3 and 4 instead.



## 6.3 New method - changing a Device instance

All devices available on the canbus are enumerated under the `com.victronenergy.vecan` service. And for all devices that support the necessary can-bus commands, the Device instance can be changed. All Victron products support changing their Device instance; and most or all non-Victron products as well.

```
# dbus -y com.victronenergy.vecan.can0 / GetValue
value = {
  'Devices/00002CC001F4/DeviceInstance': 0,
  'Devices/00002CC001F4/FirmwareVersion': 'v2.73',
  'Devices/00002CC001F4/Manufacturer': 358,
  'Devices/00002CC001F4/ModelName': 'Cerbo GX',
  'Devices/00002CC001F4/N2kUniqueNumber': 500,
  'Devices/00002CC001F4/Nad': 149,
  'Devices/00002CC001F4/Serial': '0000500',
  'Devices/00002CC005EA/CustomName': 'Hub-1',
  'Devices/00002CC005EA/DeviceInstance': 0,
  'Devices/00002CC005EA/FirmwareVersion': 'v2.60-beta-29',
  'Devices/00002CC005EA/Manufacturer': 358,
  'Devices/00002CC005EA/ModelName': 'Color Control GX',
  'Devices/00002CC005EA/N2kUniqueNumber': 1514,
  'Devices/00002CC005EA/Nad': 11,
  'Devices/00002CC005EA/Serial': '0001514',
  'Devices/00002CC005EB/CustomName': 'SmartBMV',
  [and so forth]
```

To change them, do a `SetValue` call to the `DeviceInstance` path like below. Or, perhaps easier, use the `dbus-spy` tool.

These lines read it, then changes it to 1, then reads it again:

```
root@ccgx:~# dbus -y com.victronenergy.vecan.can0
/Devices/00002CC005EB/DeviceInstance GetValue
value = 0
root@ccgx:~# dbus -y com.victronenergy.vecan.can0
/Devices/00002CC005EB/DeviceInstance SetValue %1
retval = 0
root@ccgx:~# dbus -y com.victronenergy.vecan.can0
/Devices/00002CC005EB/DeviceInstance GetValue
value = 1
```

[note that numbers, like `can0`, and `00002CC005EB` can ofcourse be different on your system].

## 6.4 New method - changing Data instance

This applies only the NMEA2000-out feature. See links on top of page for what the NMEA2000 out feature is.

The data instances used for the NMEA2000 out feature are stored in local settings. Here is a snippet of the lines, taken by using the dbus-spy tool that also allows changing entries:

The Data instances are the "Battery-", "DCDetailed-", and so forth instances.

Settings/Vecan/can0/Forward/battery/256/BatteryInstance0	0	<-
Data instance for main voltage measurement		
Settings/Vecan/can0/Forward/battery/256/BatteryInstance1	1	<-
Data instance for starter or mid-voltage measurement		
Settings/Vecan/can0/Forward/battery/256/Description2		
Settings/Vecan/can0/Forward/battery/256/IdentityNumber	15	
Settings/Vecan/can0/Forward/battery/256/Instance	1	
Settings/Vecan/can0/Forward/battery/256/Nad	233	<-
Source address - no need, also not good, to change this		
Settings/Vecan/can0/Forward/battery/256/SwitchInstance1	0	<-
Data instance for switchbank		
Settings/Vecan/can0/Forward/battery/256/SystemInstance	0	
Settings/Vecan/can0/Forward/solarcharger/0/DcDataInstance0	0	
Settings/Vecan/can0/Forward/solarcharger/0/DcDataInstance1	1	
Settings/Vecan/can0/Forward/solarcharger/0/Description2		
Settings/Vecan/can0/Forward/solarcharger/0/IdentityNumber	25	
Settings/Vecan/can0/Forward/solarcharger/0/Instance	0	
Settings/Vecan/can0/Forward/solarcharger/0/Nad	36	
Settings/Vecan/can0/Forward/solarcharger/0/SystemInsta	0	
Settings/Vecan/can0/Forward/solarcharger/1/DcDataInstance0	0	<-
Battery voltage & current		
Settings/Vecan/can0/Forward/solarcharger/1/DcDataInstance1	1	<- PV
voltage & current		
Settings/Vecan/can0/Forward/solarcharger/1/Description2		
Settings/Vecan/can0/Forward/solarcharger/1/IdentityNumber	24	
Settings/Vecan/can0/Forward/solarcharger/1/Instance	0	
Settings/Vecan/can0/Forward/solarcharger/1/Nad	36	
Settings/Vecan/can0/Forward/solarcharger/1/SystemInstance	0	
Settings/Vecan/can0/Forward/solarcharger/258/DcDataInstance0	0	
Settings/Vecan/can0/Forward/solarcharger/258/DcDataInstance1	1	
Settings/Vecan/can0/Forward/solarcharger/258/Description2		
Settings/Vecan/can0/Forward/solarcharger/258/IdentityNumber	23	
Settings/Vecan/can0/Forward/solarcharger/258/Instance	0	
Settings/Vecan/can0/Forward/solarcharger/258/Nad	36	
Settings/Vecan/can0/Forward/solarcharger/258/SystemInstance	0	

## 6.5 Old method

(Only allows changing Device instances - not data instances as used in the NMEA2000-out function)

Step 1. List the devices:

```
root@ccgx:~# dbus -y  
com.victronenergy.bms.socketcan_can0_di0_uc10
```

```
com.victronenergy.charger.socketcan_can0_di1_uc12983
```

It shows a Skylla-i (the charger). di1 in the name means that it is currently on DeviceInstance 1.

Step 2. Change it, for example, to 4:

```
root@ccgx:~# dbus -y com.victronenergy.charger.socketcan_can0_di0_uc12983  
/DeviceInstance SetValue %4  
retval = 0
```

Step 3. Wait a few seconds, and double check:

```
root@ccgx:~# dbus -y  
com.victronenergy.bms.socketcan_can0_di0_uc10  
com.victronenergy.charger.socketcan_can0_di4_uc12983
```

Device instance changed successful!

From:  
<https://www.victronenergy.com/live/> - **Victron Energy**

Permanent link:  
[https://www.victronenergy.com/live/ve.can:changing\\_nmea2000\\_instances](https://www.victronenergy.com/live/ve.can:changing_nmea2000_instances)

Last update: **2021-12-09 09:54**

