

Proposal VRM portal

— [Andreas Kriwanek](#) 2014/10/29 10:24 — **REQUEST FOR COMMENT!**

Using the VRM portal for my own **ECOMulti**, I detected some things which could be made in another way. I only want to give you a proposal for improving the portal. Overall it is a fine portal, where I can find useful measurement values for my photovoltaic system.

Maybe you can make comments to every topic: is it useful, will it be made,...

Thank you

Andy

Showing other Victron users on map

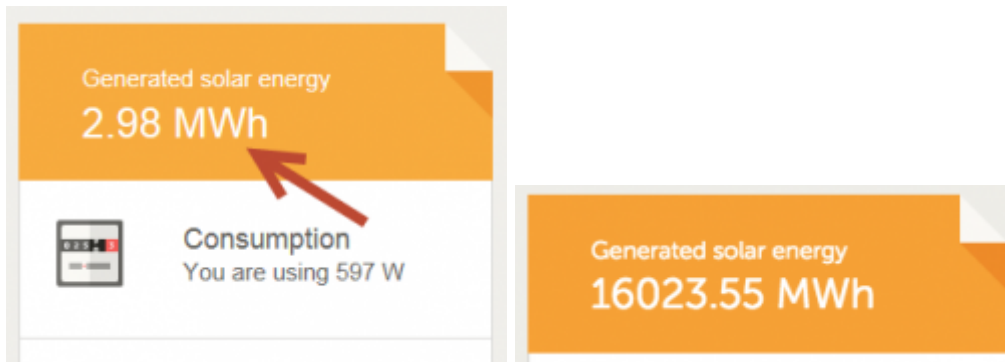
It's a nice feature to see a map, where my PV system is located. Is it possible to show other VRM users around me on the map? Maybe only the users which have made their portal site public available. The other systems should be shown as little flag, like the own system

MVA: what we will probably do is:

- add a setting for each site: Public / non-public
- add a text field where people can describe their system
- on the homepage (what you see when you are not logged in yet) there will be a map with all public sites
- the new VRM app allows to upload photos, but the vrm website does not do anything with that yet. These will also be shown somewhere
- note that people that use the site, never see the homepage
- when logged in, you'll see public sites on your map by default. These sites will have a different color, perhaps smaller flag. And it is possible to turn that feature off. This is a user-setting, not a site-setting.
- data shared is the same type of data that is shared to the demo account. This means:
 - settings tab invisible AND not accessible
 - no data export
 - no phone numbers
 - no VEConfigure Remote widget and no CCGX upload widget on the advanced tab

Generated solar energy - enable presets

The "Generated solar energy" value is the accumulation of the generated solar energy. On the second day of my new ECOMulti, I made a change with VEConfigure3. After the reboot of the ECOMulti the CCGX altered the value from a few kWh to 2,39 MWh. Now I have to live with the wrong value. Is there a possibility to change it? The best way for solving this problem would be to provide a field, where the value can be altered manually. This is my problem:



MVA: This is technically quite difficult, since the database stores the kWh per hour. And also stores many different points. I can remove the high peaks for you, I'll have a look. Perhaps the high peaks stand out so much that I can do it for all sites automatically.

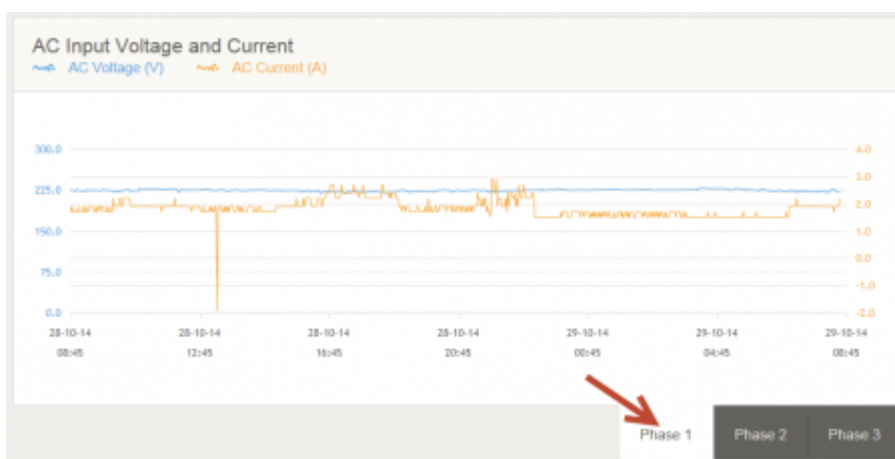
Paul on the 18th of september: I think this needs a systematic solution, because new instances of broken data are clearly still being produced

MVA, Yes, you are 100% correct on that. It is in the works! Two ways actually:

1. Clean up the database, it is quite easy to remove all excessive hourly registrations
2. Prevent it from happening in the first place, either by fixing the root cause or at least by making a detection that prevents sending out 'impossible' values such as 1000kWh PV Power used to charge a battery in one hour.

Wrong phase on "Advanced" tab

In the "Advanced" tab, the diagrams are for the three phases L1, L2 and L3. I have only a single phase system, which is electrically coupled to phase 2. It would be better, that a user has the choice to select on which phase the system is located. Additionally it would be useful the hide the two unused tabs.



MVA: I'll put this on the list for the CCGX, this is not a VRM Portal problem.

Short description of PV system

Solar users are proud of their system. They show the PV values to their friends. As an enhancement, it would be nice to add an description of the own system and include an image of the system. This is an example from SMA SunnyPortal:

Anlagensteckbrief | Bad Aibling AKR

Standort: Bad Aibling, Deutschland
Inbetriebnahme: 24.08.2014

Anlagenleistung: 2,880 kWp
Jahresproduktion: ca. 2.592 kWh (900 kWh/kWp)
CO2 Vermeidung: ca. 1,8 Tonnen jährlich

Kommunikation: Sunny Multigate-10
Wechselrichter: 12 x Sunny Boy 240-10
Module: 6 x S-Energy SM-240PC8 (03/2013)
Azimut: -10°, Neigungswinkel: 30°
4 x S-Energy SM-240PC8 (UL) (03/2013)
Azimut: -10°, Neigungswinkel: 30°
2 x S-Energy SM-240PC8 (03/2013)
Azimut: -100°, Neigungswinkel: 30°



Beschreibung:

Diese **2,88 kWp Photovoltaikanlage** wurde im August 2014 auf einer Doppelhaushälfte mit wenig unverschattetem Platz für Solarmodule errichtet. Um die Verschattung einzelner Module auszugleichen, wurden 12 S-Energy-Module (240W) mit SMA-Modulwechselrichtern **Sunny Boy 240** verwendet. Die erzeugte Energie dient dazu, einen **Victron Energy ECOMulti Solarspeicher** zu laden. Der ECOMulti beinhaltet **2,4kWh LiFePo-Akkus**, welche den Nachtbetrieb des Hauses ermöglichen, ohne vom Grid Energie zu beziehen. Überschüsse werden ins Netz des EVU's eingespeist.

►  Konfiguration - Anlagensteckbrief

MVA: Yes, will be done, early 2016 at the latest

Missing charging/discharging information on "Batteries" tab

On this tab we have the time diagram of SOC, together with values for DC voltage and SOC. It would be nice to see the DC current (+/-) and the DC power here, too. With this information I would have the quick information about charging/discharging and the actual power of it.



MVA: Yes, will be done. We are working on a full redesign, where this will be done. Early 2016.

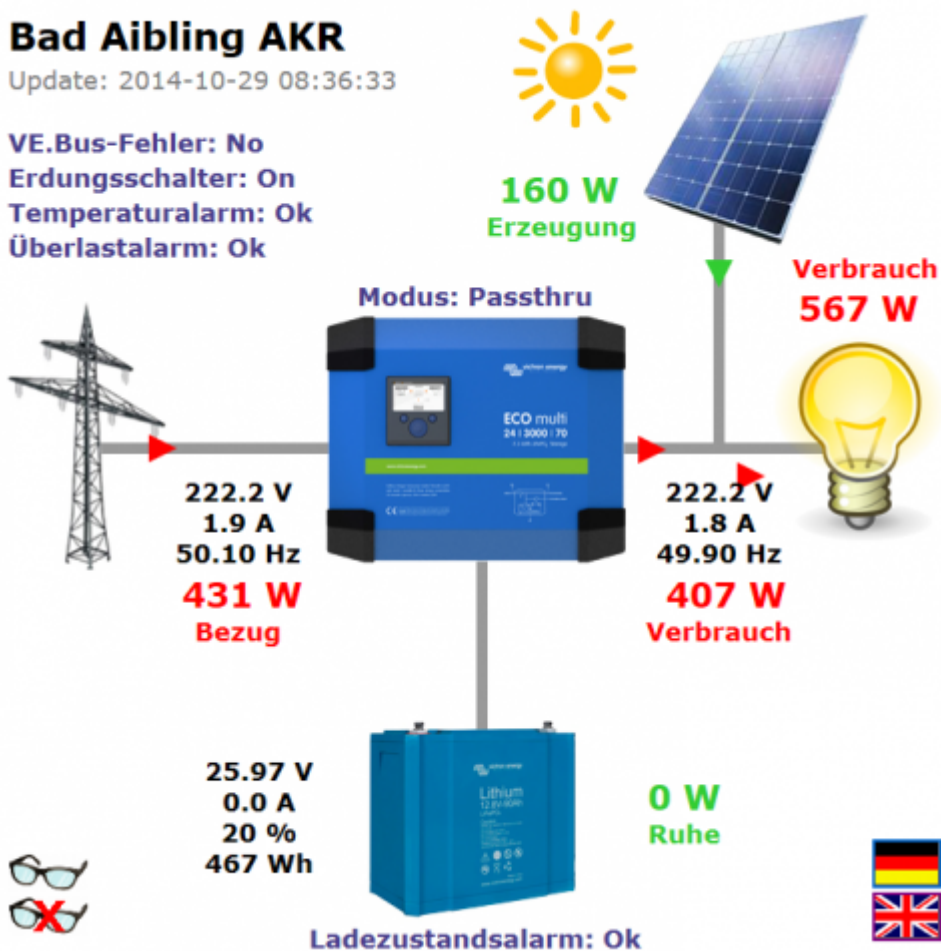
Animated System diagram in VRM portal

It would be nice to have the animated system diagram with the measurement values on the VRM portal, too. In the APP it is included. This is my own creation with HTML5 and CSS3:

Bad Aibling AKR

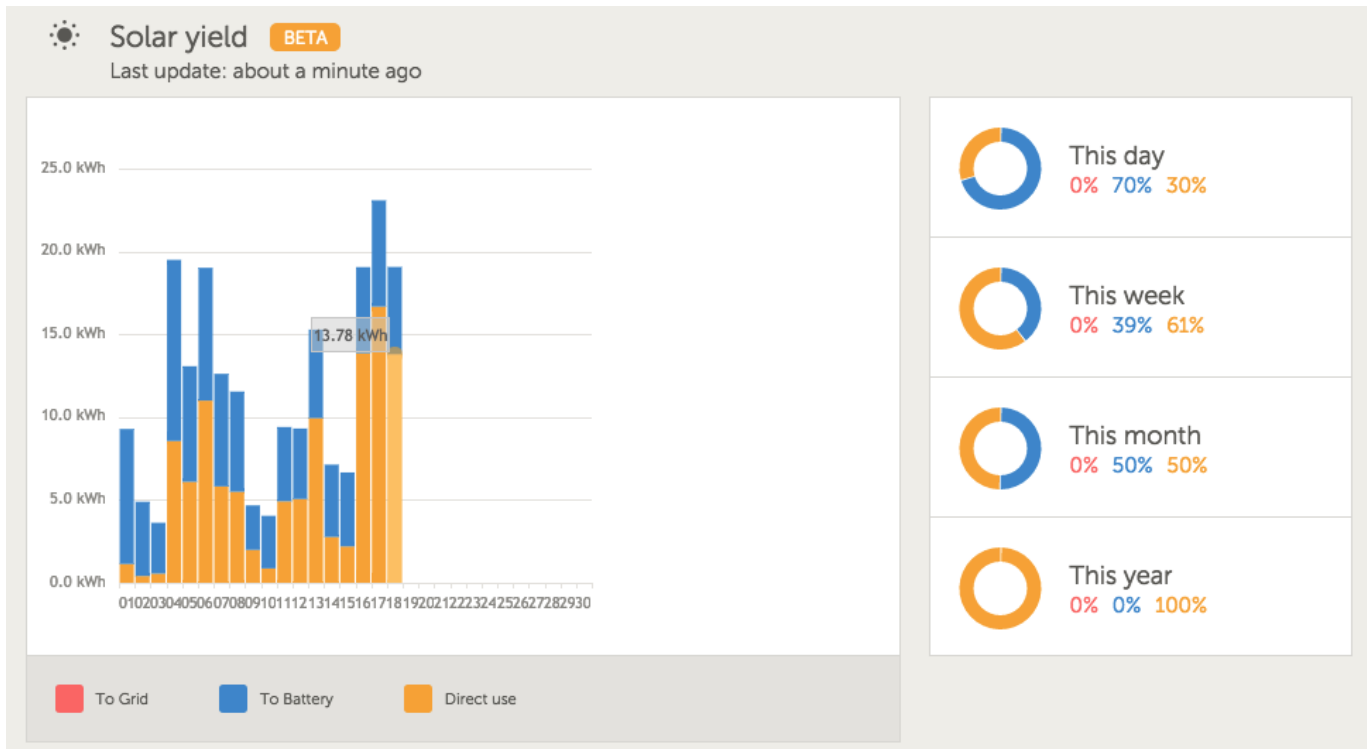
Update: 2014-10-29 08:36:33

VE.Bus-Fehler: No
Erdungsschalter: On
Temperaturalarm: Ok
Überlastalarm: Ok



MVA: Yes, the company that is billing me hours for working on the portal wants the same :). We'll do it soon. I was waiting for the logic to become fixed, instead of changing every month. We are almost there. As soon as CCGX v1.16 is fully working we'll do it.

Totals in Solar Yield and Consumption tabs



The stacked bar graph in these tabs should have some way to show the actual total for the whole bar, not just amounts for each type when hovering over it. Eg: in the screenshot, the total for the 17th is about 22kWh, but that's not available anywhere.

Also, the “This [Day|Week|Month|Year]” pie charts on the right need to have actual kWh values attached to them. This week, 61% of solar was direct use, and that was ?? kWh.

DISQUS Comments

~~DISQUS~~

From:
<https://www.victronenergy.com/live/> - **Victron Energy**

Permanent link:
https://www.victronenergy.com/live/drafts:proposal_vrm_portal?rev=1442587111

Last update: **2015-09-18 16:38**

