

## Proposal VRM portal

— *Andreas Kriwanek* 2014/10/29 10:24 — <font 9pt/arial;;rgb(255, 0, 0);;#ffffff> **REQUEST FOR COMMENT!** </font>

This proposal is for Victron employees only!

Using the VRM portal for my own **ECOmulti**, I detected some things which could be made in another way. I only want to give you a proposal for improving the portal. Overall it's a fine portal, where I can find useful measurement values for my photovoltaic system.

Maybe you can make comments to every topic: is it useful, will it be made,...

Thank you

Andy

## Publish my VRM site to everyone

We would like to have the possibility, to publish the PV values from the VRM portal to everyone. As a seller of PV systems, our potential customers would like to see real data, before they make a contract with us. At the moment I can add a VRM user, but then I must provide my customer with the user ID and the password. This brings up the risk, that a customer can change the password. And it's difficult to logon to the portal, every time you want to see a few values.

And, by the way, it would be a good feature to show my solar data to friends and relatives without logging in.

**MVA: Yes, there will be a readonly access link. Like the dropbox share link.**

## Showing other Victron users on map

It's a nice feature to see a map, where my PV system is located. Is it possible to show other VRM users around me on the map? Maybe only the users which have made their portal site public available. The other systems should be shown as little flag, like the own system

**MVA: what we will probably do is:**

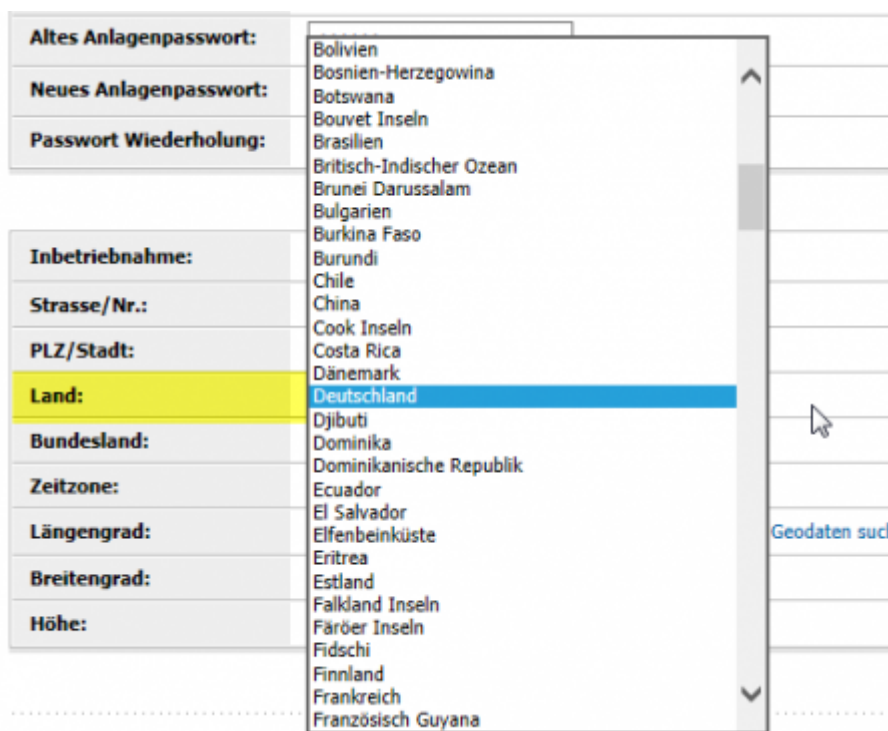
- add a setting for each site: Public / non-public
- add a text field where people can describe their system
- on the homepage (what you see when you are not logged in yet) there will be a map with all public sites
- the new VRM app allows to upload photos, but the vrm website does not do anything with that yet. These will also be shown somewhere
- note that people that use the site, never see the homepage
- when logged in, you'll see public sites on your map by default. These sites will have a different color, perhaps smaller flag. And it is possible to turn that feature off. This is a user-setting, not a

site-setting.

- data shared is the same type of data that is shared to the demo account. This means:
  - settings tab invisible AND not accessible
  - no data export
  - no phone numbers
  - no VEConfigure Remote widget and no CCGX upload widget on the advanced tab

## Selection for native language

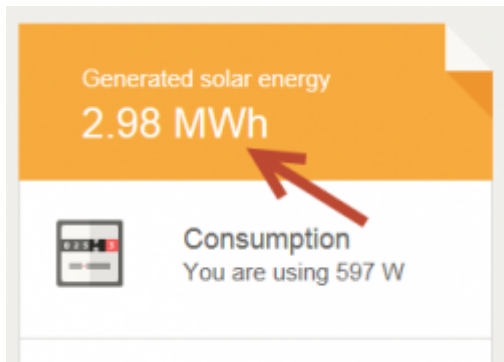
The language of the VRM portal is English. In Germany we have a lot of customers, which want to see their system in their native language, because they speak no English. We would like to have a localization selector box in the settings. If you need the German translation - no problem, I can do that. Example:



**MVA: is being done at this moment.**

## Generated solar energy - enable presets

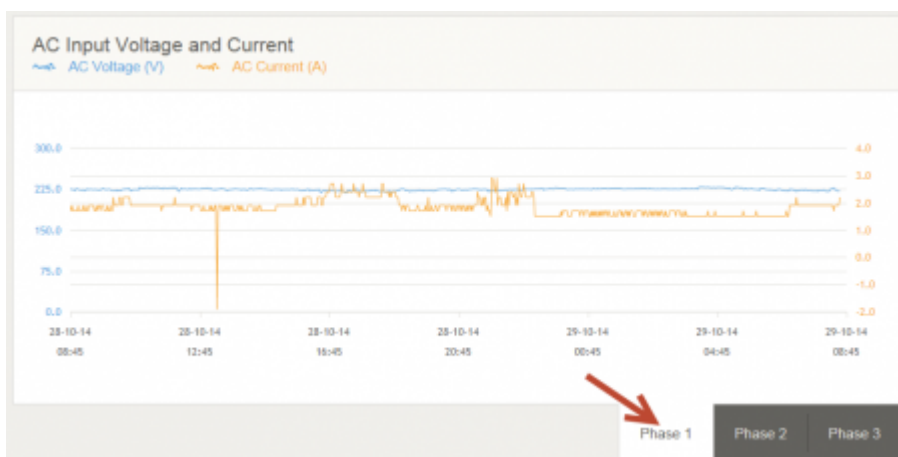
The "Generated solar energy" value is the accumulation of the generated solar energy. On the second day of my new ECOMulti, I made a change with VEConfigure3. After the reboot of the ECOMulti the CCGX altered the value from a few kWh to 2,39 MWh. Now I have to live with the wrong value. Is there a possibility to change it? The best way for solving this problem would be to provide a field, where the value can be altered manually. This is my problem:



**MVA: This is technically quite difficult, since the database stores the kWh per hour. And also stores many different points. I can remove the high peaks for you, I'll have a look. Perhaps the high peaks stand out so much that I can do it for all sites automatically.**

## Wrong phase on "Advanced" tab

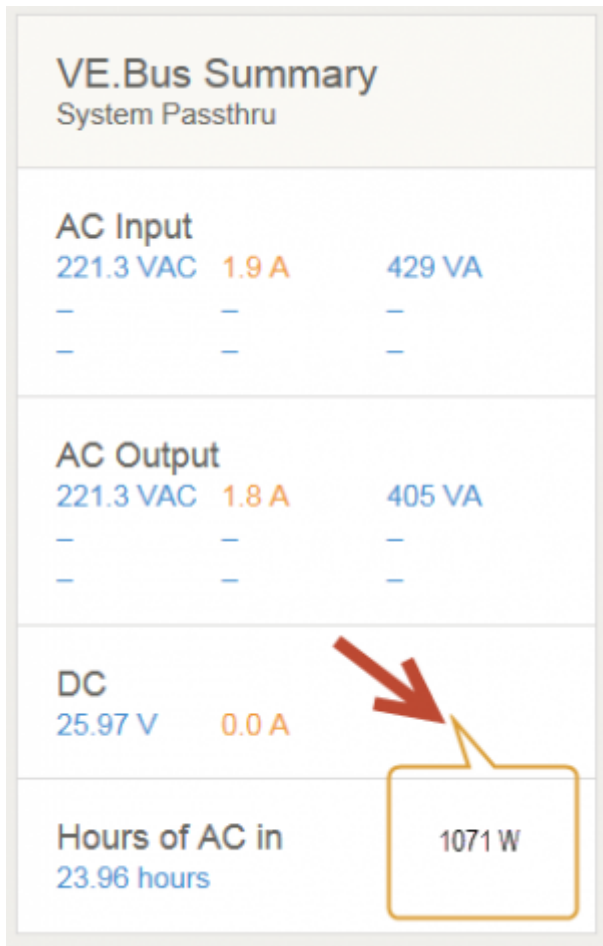
In the "Advanced" tab, the diagrams are for the three phases L1, L2 and L3. I have only a single phase system, which is electrically coupled to phase 2. It would be better, that a user has the choice to select on which phase the system is located. Additionally it would be useful the hide the two unused tabs.



**MVA: I'll put this on the list for the CCGX.**

## Missing DC power on "Advanced" tab

There is a VE.Bus summary table on the right side. AC input and output are shown. In the 3rd row the DC voltage and current are shown. It would be fine, if the DC power (Voltage x Current) will be displayed, too. Just like AC input and output.



**MVA: Good idea, we will add that.**

## Short description of PV system

Solar users are proud of their system. They show the PV values to their friends. As an enhancement, it would be nice to add a description of the own system and include an image of the system. This is an example from SMA SunnyPortal:

## Anlagensteckbrief | Bad Aibling AKR

**Standort:** Bad Aibling, Deutschland  
**Inbetriebnahme:** 24.08.2014

**Anlagenleistung:** 2,880 kWp  
**Jahresproduktion:** ca. 2.592 kWh (900 kWh/kWp)  
**CO2 Vermeidung:** ca. 1,8 Tonnen jährlich

**Kommunikation:** Sunny Multigate-10  
**Wechselrichter:** 12 x Sunny Boy 240-10  
**Module:** 6 x S-Energy SM-240PC8 (03/2013)  
 Azimut: -10°, Neigungswinkel: 30°  
 4 x S-Energy SM-240PC8 (UL) (03/2013)  
 Azimut: -10°, Neigungswinkel: 30°  
 2 x S-Energy SM-240PC8 (03/2013)  
 Azimut: -100°, Neigungswinkel: 30°



### Beschreibung:

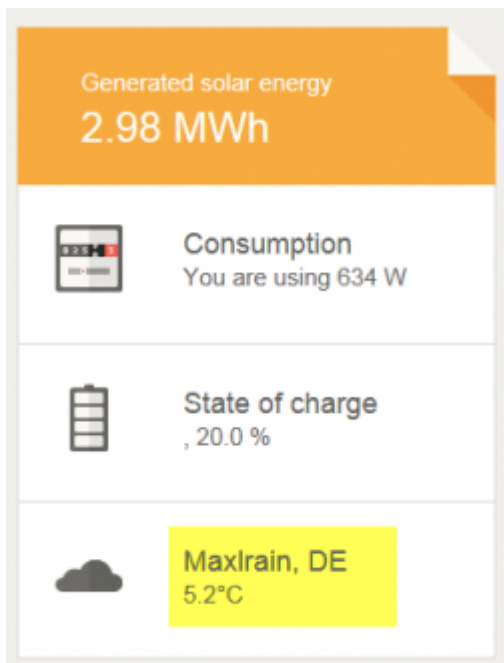
Diese **2,88 kWp Photovoltaikanlage** wurde im August 2014 auf einer Doppelhaushälfte mit wenig unverschattetem Platz für Solarmodule errichtet. Um die Verschattung einzelner Module auszugleichen, wurden 12 S-Energy-Module (240W) mit SMA-Modulwechselrichtern **Sunny Boy 240** verwendet. Die erzeugte Energie dient dazu, einen **Victron Energy ECOMulti Solarspeicher** zu laden. Der ECOMulti beinhaltet **2,4kWh LiFePo-Akkus**, welche den Nachtbetrieb des Hauses ermöglichen, ohne vom Grid Energie zu beziehen. Überschüsse werden ins Netz des EVU's eingespeist.

↳ [Konfiguration - Anlagensteckbrief](#)

**MVA: Yes, will be done.**

## Weather location is changing without altering the GPS coordinates

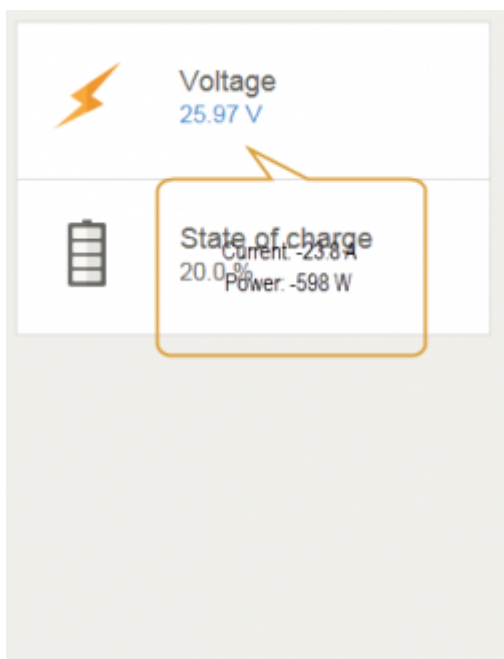
At the setup of my system in VRM portal I typed in the GPS coordinates of my town Bad Aibling. In the tab "Live feed" different nearby locations are displayed, e.g. Tuntenhausen, Maxlrain (about 5 km away). Why is it changing automatically? From where do you get the weather data?



**MVA: Yes I have heard this more often. We'll find out if there is anything that can be done about it.**

## Missing charging/discharging information on "Batteries" tab

On this tab we have the time diagram of SOC, together with values for DC voltage and SOC. It would be nice to see the DC current (+/-) and the DC power here, too. With this information I would have the quick information about charging/discharging and the actual power of it.



**MVA: Yes, will be done. We'll also update the Battery status widget on the advanced tab.**

# Missing values on "Advanced" tab

On the tab "Advanced" there are fields with the naming

- Consumed energy
- Time to go

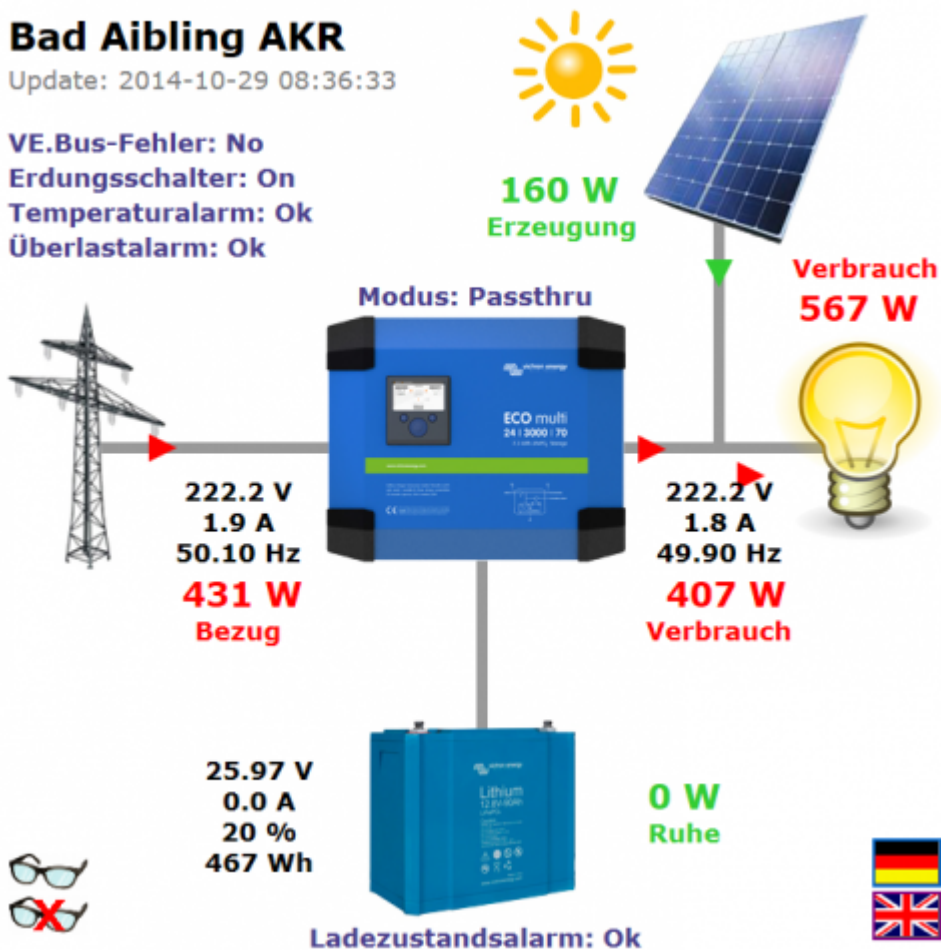
The problem is, that they are never populated with values. Only "—" is displayed. "Consumed energy" should show the kWh which are stored in my battery? "Time to go" makes only sense, when the ECOMulti is inverting, because the actual load has be regarded. Can we display the values?

Is it a problem with the ECOMulti only. Another user "Yacht ELEKTRA" shows values at consumed energy.

**MVA: The SOC in your case is coming from the Multi, and it doesn't calculate Consumed energy and Time to go yet.**

# Animated System diagram in VRM portal

It would be nice to have the animated system diagram with the measurement values on the VRM portal, too. In the APP it is included. This is my own creation with HTML5 and CSS3:



**MVA: Yes, the company that is billing me hours for working on the portal wants the same**

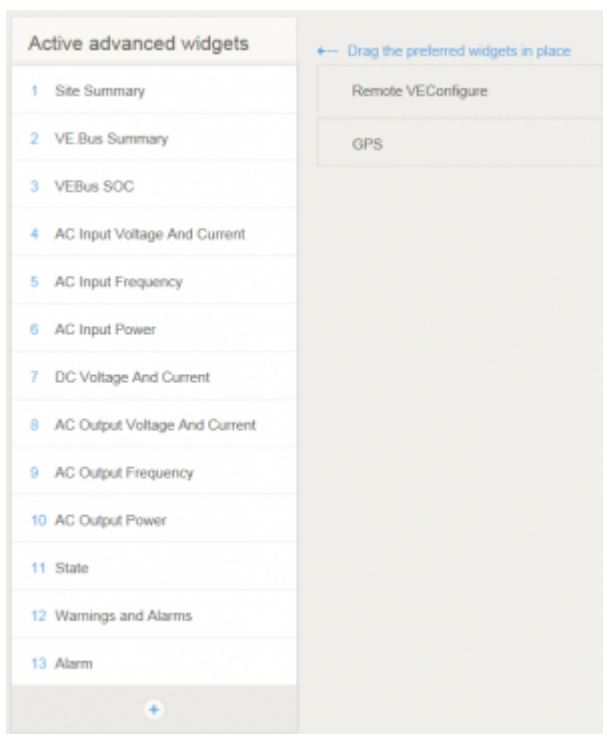
**:). We'll do it soon. I was waiting for the logic to become fixed, instead of changing every month. We are almost there. As soon as CCGX v1.16 is fully working we'll do it.**

## Settings - Create your site summary not working well

In the settings the shown widgets for the "Advanced" tab can be configured. You take a widget from the right side and drag it to the left table where it should be shown. After doing this, you have no possibility to drag a second widget to the left side. You have to save and then you can repeat it sometimes.

It seems, that the table on the left side is limited to a maximum of four widgets. I am not able to drag a fifth one to the left. If I delete one on the left side, I can place another one.

It seems to be changed since yesterday. In the settings there are more possibilities:



But it is not displayed on the "Advanced" tab:

*Note from John Rushworth. My Yacht ELEKTRA site summary now working fine. I could drag individual widgets to a total of 4 or less and save when I had what I required. Mine now displays in "Advanced" tab, as below.*



**MVA: Andreas, can you try and let me know if this is still a problem?**

# DISQUS

~~DISQUS~~

From:  
<https://www.victronenergy.com/live/> - **Victron Energy**

Permanent link:  
[https://www.victronenergy.com/live/drafts:proposal\\_vrm\\_portal?rev=1416913399](https://www.victronenergy.com/live/drafts:proposal_vrm_portal?rev=1416913399)

Last update: **2014-11-25 12:03**

