

## Proposal VRM portal

— [Andreas Kriwanek](#) 2014/10/29 10:24 — **REQUEST FOR COMMENT!**

This proposal is for Victron employees only!

Using the VRM portal for my own **ECOMulti**, I detected some things which could be made in another way. I only want to give you a proposal for improving the portal. Overall it's a fine portal, where I can find useful measurement values for my photovoltaic system.

Maybe you can make comments to every topic: is it useful, will it be made,...

Thank you

Andy

## Publish my VRM site to everyone

We would like to have the possibility, to publish the PV values from the VRM portal to everyone. As a seller of PV systems, our potential customers would like to see real data, before they make a contract with us. At the moment I can add a VRM user, but then I must provide my customer with the user ID and the password. This brings up the risk, that a customer can change the password. And it's difficult to logon to the portal, every time you want to see a few values.

And, by the way, it would be a good feature to show my solar data to friends and relatives without logging in.

## Showing other Victron users on map

It's a nice feature to see a map, where my PV system is located. Is it possible to show other VRM users around me on the map? Maybe only the users which have made their portal site public available. The other systems should be shown as little flag, like the own system

## Selection for native language

The language of the VRM portal is English. In Germany we have a lot of customers, which want to see their system in their native language, because they speak no English. We would like to have a localization selector box in the settings. If you need the German translation - no problem, I can do that. Example:

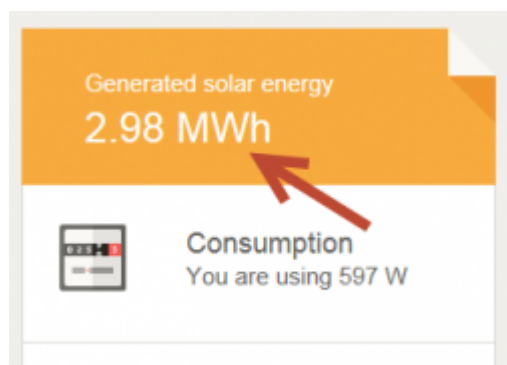
Altes Anlagenpasswort:	
Neues Anlagenpasswort:	
Passwort Wiederholung:	
Inbetriebnahme:	
Strasse/Nr.:	
PLZ/Stadt:	
Land:	Deutschland
Bundesland:	
Zeitzone:	
Längengrad:	
Breitengrad:	
Höhe:	

Bolivien  
Bosnien-Herzegowina  
Botswana  
Bouvet Inseln  
Brasilien  
Britisch-Indischer Ozean  
Brunei Darussalam  
Bulgarien  
Burkina Faso  
Burundi  
Chile  
China  
Cook Inseln  
Costa Rica  
Dänemark  
Djibuti  
Dominika  
Dominikanische Republik  
Ecuador  
El Salvador  
Elfenbeinküste  
Eritrea  
Estland  
Falkland Inseln  
Färöer Inseln  
Fidschi  
Finnland  
Frankreich  
Französisch Guyana

Geodaten such

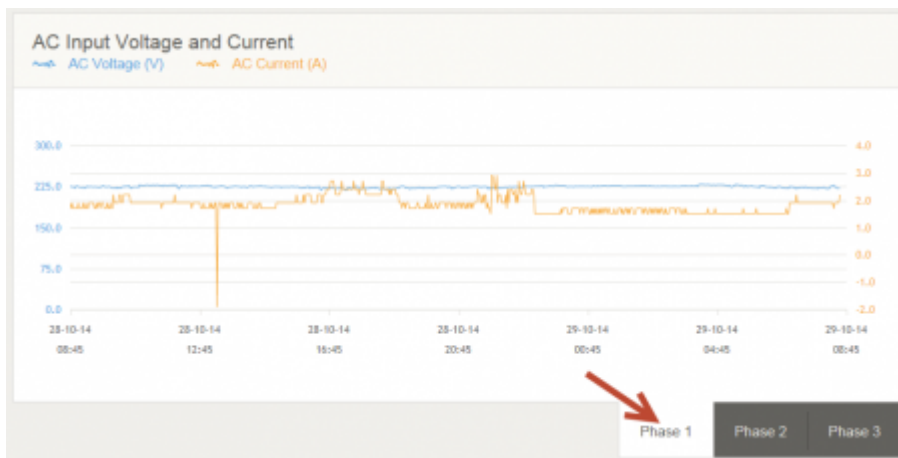
## Generated solar energy - enable presets

The "Generated solar energy" value is the accumulation of the generated solar energy. On the second day of my new ECOMulti, I made a change with VEConfigure3. After the reboot of the ECOMulti the CCGX altered the value from a few kWh to 2,39 MWh. Now I have to live with the wrong value. Is there a possibility to change it? The best way for solving this problem would be to provide a field, where the value can be altered manually. This is my problem:



## Wrong phase on "Advanced" tab

In the "Advanced" tab, the diagrams are for the three phases L1, L2 and L3. I have only a single phase system, which is electrically coupled to phase 2. It would be better, that a user has the choice to select on which phase the system is located. Additionally it would be useful th hide the two unused tabs.



## Missing DC power on "Advanced" tab

There is a VE.Bus summary table on the right side. AC input and output are shown. In the 3rd row the DC voltage and current are shown. It would be fine, if the DC power (Voltage x Current) will be displayed, too. Just like AC input and output.

VE.Bus Summary System Passthru		
<b>AC Input</b>		
221.3 VAC	1.9 A	429 VA
-	-	-
-	-	-
<b>AC Output</b>		
221.3 VAC	1.8 A	405 VA
-	-	-
-	-	-
<b>DC</b>		
25.97 V	0.0 A	
<b>Hours of AC in</b>		
23.96 hours		1071 W

## Short description of PV system

Solar users are proud of their system. They show the PV values to their friends. As an enhancement, it

would be nice to add an description of the own system and include an image of the system. This is an example from SMA SunnyPortal:


## Anlagensteckbrief | Bad Aibling AKR

<b>Standort:</b> Bad Aibling, Deutschland <b>Inbetriebnahme:</b> 24.08.2014
<b>Anlagenleistung:</b> 2,880 kWp <b>Jahresproduktion:</b> ca. 2.592 kWh (900 kWh/kWp) <b>CO2 Vermeidung:</b> ca. 1,8 Tonnen jährlich
<b>Kommunikation:</b> Sunny Multigate-10 <b>Wechselrichter:</b> 12 x Sunny Boy 240-10 <b>Module:</b> 6 x S-Energy SM-240PC8 (03/2013) Azimut: -10°, Neigungswinkel: 30° 4 x S-Energy SM-240PC8 (UL) (03/2013) Azimut: -10°, Neigungswinkel: 30° 2 x S-Energy SM-240PC8 (03/2013) Azimut: -100°, Neigungswinkel: 30°



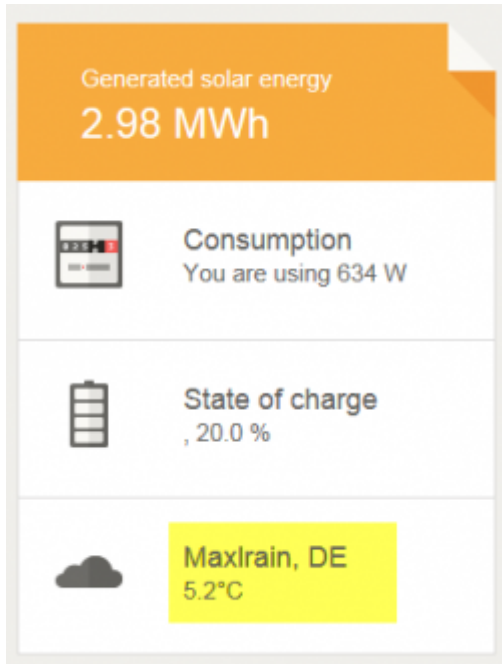
### Beschreibung:

Diese **2,88 kWp Photovoltaikanlage** wurde im August 2014 auf einer Doppelhaushälfte mit wenig unverschattetem Platz für Solarmodule errichtet. Um die Verschattung einzelner Module auszugleichen, wurden 12 S-Energy-Module (240W) mit SMA-Modulwechselrichtern **Sunny Boy 240** verwendet. Die erzeugte Energie dient dazu, einen **Victron Energy ECOMulti Solarspeicher** zu laden. Der ECOMulti beinhaltet **2,4kWh LiFePo-Akkus**, welche den Nachtbetrieb des Hauses ermöglichen, ohne vom Grid Energie zu beziehen. Überschüsse werden ins Netz des EVU's eingespeist.

▸  Konfiguration - Anlagensteckbrief

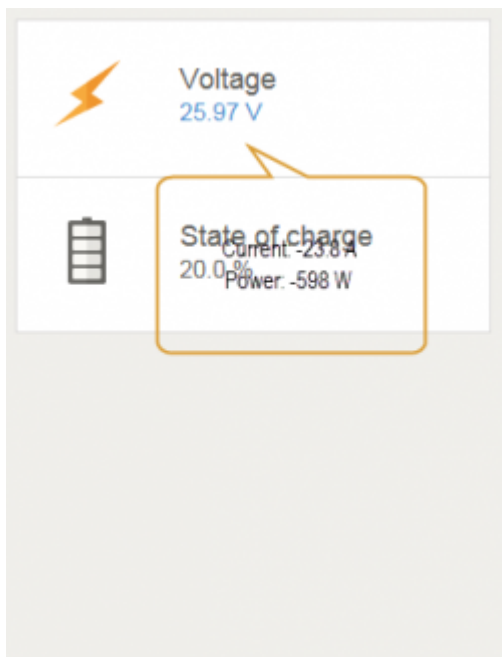
## Weather location is changing without altering the GPS coordinates

At the setup of my system in VRM portal I typed in the GPS coordinates of my town Bad Aibling. In the tab "Live feed" different nearby locations are displayed, e.g. Tuntenhausen, Maxlrain (about 5 km away). Why is it changing automatically? From where do you get the weather data?



## Missing charging/discharging information on "Batteries" tab

On this tab we have the time diagram of SOC, together with values for DC voltage and SOC. It would be nice to see the DC current (+/-) and the DC power here, too. With this information I would have the quick information about charging/discharging and the actual power of it.



## Missing values on "Advanced" tab

On the tab "Advanced" there are fields with the naming

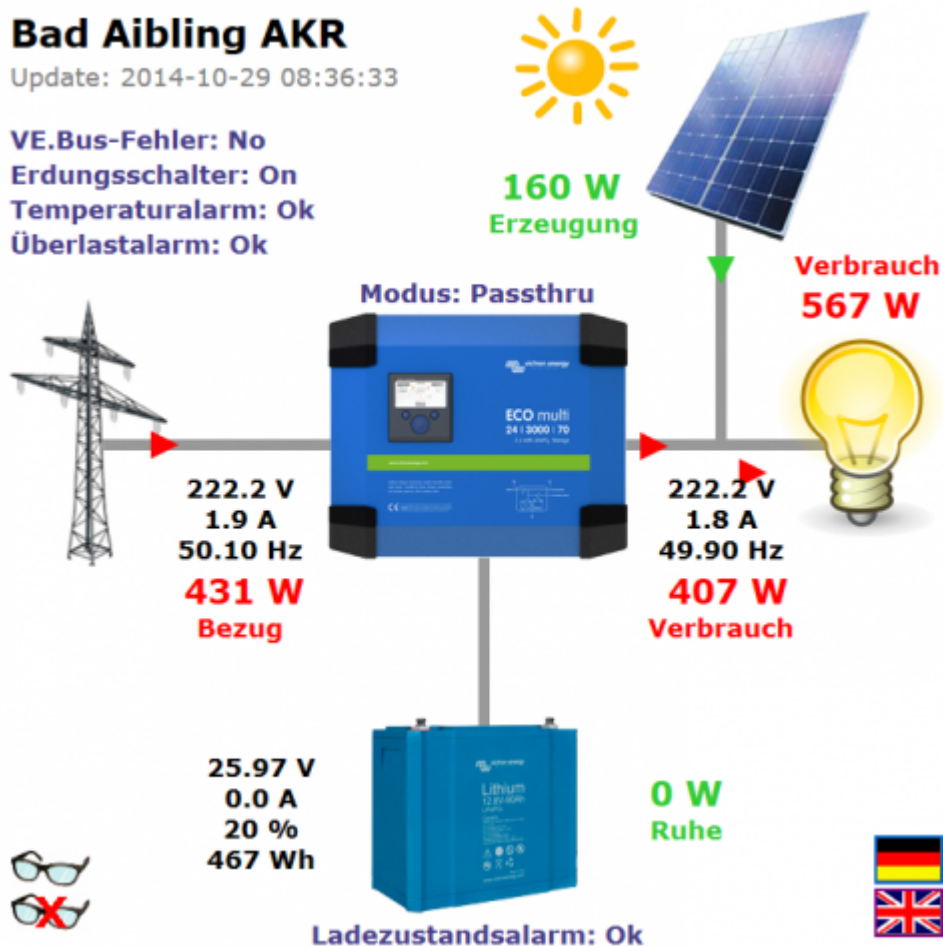
- Consumed energy
- Time to go

The problem is, that they are never populated with values. Only “—” is displayed. “Consumed energy” should show the kWh which are stored in my battery? “Time to go” makes only sense, when the ECOMulti is inverting, because the actual load has be regarded. Can we display the values?

Is it a problem with the ECOMulti only. Another user “Yacht ELEKTRA” shows values at consumed energy.

## Animated System diagram in VRM portal

It would be nice to have the animated system diagram with the measurement values on the VRM portal, too. In the APP it is included. This is my own creation with HTML5 and CSS3:

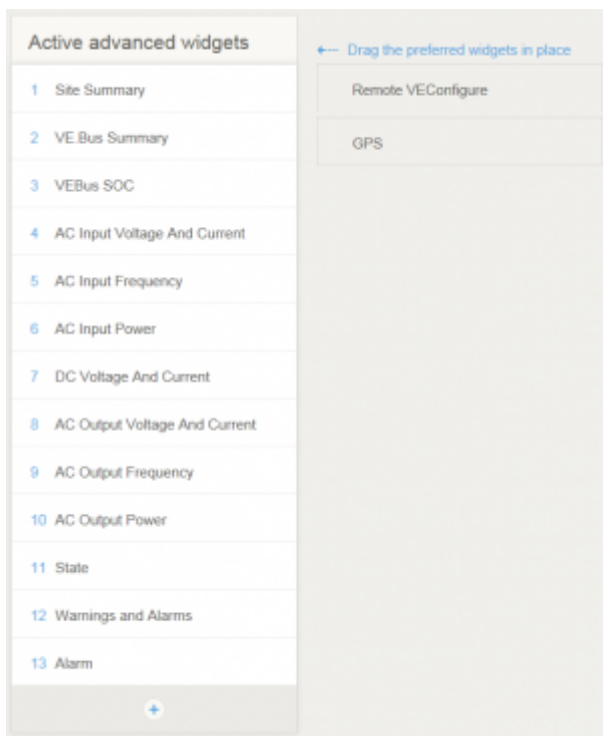


## Settings - Create your site summary not working well

In the settings the shown widgets for the “Advanced” tab can be configured. You take a widget from the right side and drag it to the left table where it should be shown. After doing this, you have no possibility to drag a second widget to the left side. You have to save and the you can repeat it sometimes.

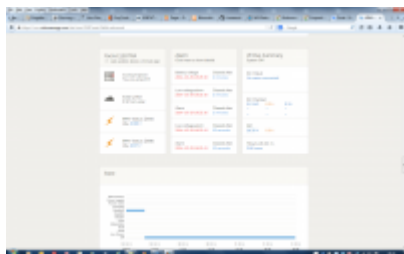
It seems, that the table on the left side is limited to a maximum of four widgets. I am not able to drag a fith one to the left. If I delete one on the left side, I can place another one.

It seems to be changed since yesterday. In the settings there are more possibilities:



But it is not displayed on the "Advanced" tab:

*Note from John Rushworth. My Yacht ELEKTRA site summary now working fine. I could drag individual widgets to a total of 4 or less and save when I had what I required. Mine now displays in "Advanced" tab, as below.*



## DISQUS

~~DISQUS~~

From:  
<https://www.victronenergy.com/live/> - **Victron Energy**

Permanent link:  
[https://www.victronenergy.com/live/drafts:proposal\\_vrm\\_portal?rev=1414745509](https://www.victronenergy.com/live/drafts:proposal_vrm_portal?rev=1414745509)

Last update: **2014-10-31 09:51**

