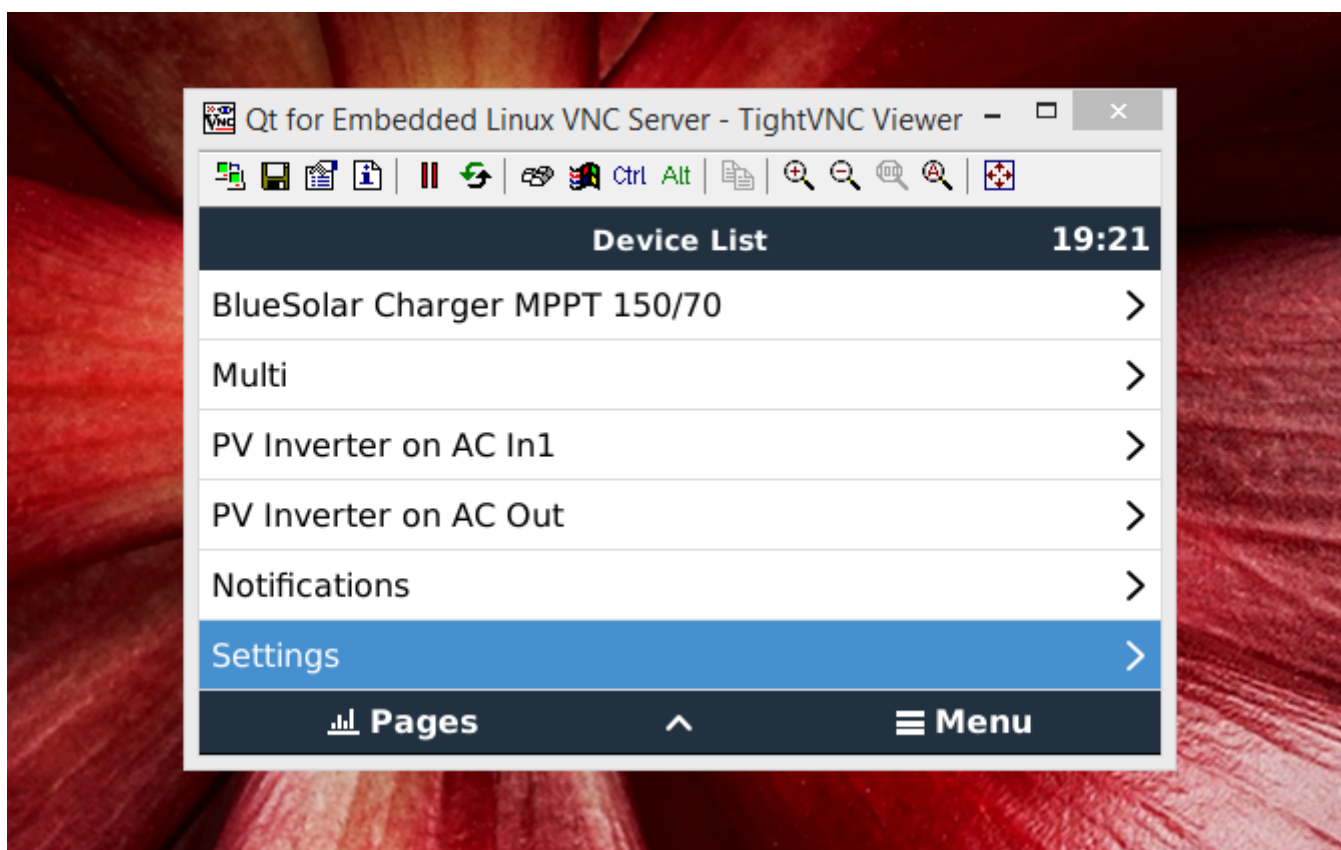


# Remote access a CCGX via VNC

**WARNING:** below instructions are for advanced usage only. Victron Energy cannot give any guarantees nor take responsibility about the possibilities and solutions offered below. Only use this if you know what you are doing and are capable of setting up VNC and other networking protocols. Below example would allow anyone to remotely access a CCGX that is connected to internet without a firewall.

## Introduction to VNC

VNC is a desktop sharing protocol, commonly used to remotely log into a computer. Similar to for example Microsoft Remote Desktop and Teamviewer. It can also be used to remotely view and use a CCGX, from a desktop computer, but also from a phone or tablet! See for example below screenshot.



## Prerequisites

First, carefully read above warning, and only continue if you know what you are doing.

Then, you need to have root access to the CCGX ssh shell. Ask for us the login details at [mvader@victronenergy.com](mailto:mvader@victronenergy.com).

Enable the SSH server by enabling Remote Support. The Remote support setting is in Settings → General.

Connect to the CCGX with a ssh client, for Windows we recommend putty.exe, available at <http://www.chiark.greenend.org.uk/~sgtatham/putty/download.html>

## Setting up the VNC server

1. Update the package repository

```
opkg update
```

2. Install the vnc server

```
opkg install qt4-embedded-plugin-gfxdriver-gfxvnc
```

3. Go to the directory containing the gui run script

```
cd /opt/color-control/gui/service
```

4. Add "-display "Multi:: VNC::size=480x272:depth=24:0" to the script. To edit the script, run

```
nano ./run
```

A basic text editor will open. Make the changes, and use ctrl-x to save and exit the file. Note that nano can be tricky when trying to change long lines. To see if you did it right, run:

```
cat ./run
```

The contents should be:

```
#!/bin/sh
exec 2>&1
exec envdir ./env softlimit -d 2000000 -s 1000000 -a 100000000 /opt/color-
control/gui/gui -qws -nomouse -display "Multi::
VNC::size=480x272:depth=24:0"
```

4. Restart the gui

```
svc -t .
```

All done! If the gui does not start up any more, double check that you successfully made the changes to the run script. The output of the gui log is in /log/gui/current. To see it, run

```
cat /log/gui/current | tai64nlocal
```

## Notes

- Above changes will disappear every time that the CCGX is updated

- A typical viewer to use on your laptop is available at <https://www.realvnc.com/>. On my laptop (64bit, windows 8.1) the realvnc viewer does not work. The VNC viewer available here did work: <http://www.tightvnc.com/>
- With above changes, you have opened port 5900 for anyone. There is ZERO security. Never do this on a CCGX that is publically connected to internet.

## DISQUS

~~DISQUS~~

From:  
<https://www.victronenergy.com/live/> - **Victron Energy**

Permanent link:  
[https://www.victronenergy.com/live/ccgx:ccgx\\_vnc?rev=1421955799](https://www.victronenergy.com/live/ccgx:ccgx_vnc?rev=1421955799)

Last update: **2015-01-22 20:43**

