

# CCGX Remote VEConfigure and firmware updates

This manual describes:

- Changing settings in VE.Bus Inverters, Multis and Quattros, called “Remote VEConfig”, using a Color Control GX as the local internet-connected gateway in the installation.
- Performing a remote firmware update of VE.Can products.

Notes:

- Remotely updating products with a VE.Direct interface will be added in the future.
- Remotely updating VE.Bus products (Inverters, Multis and Quattros) is not possible and will also not become possible.
- Since VE Power Setup 5.0, combined with Color Control GX version v1.28 or later, the products configuration is preserved during a firmware update. More information in our [blogpost about those software releases](#).

Looking for Remote VEConfigure with a “Victron Global Remote 2 (VGR2)”? See. [here](#)

## Requirements

- Make sure the CCGX runs the latest available firmware, and that Two way communication is enabled:

The screenshot shows the Victron Energy CCGX web interface. At the top, there are navigation tabs: Live feed, Solar yield, Consumption, Batteries, Advanced, and Settings. The Settings page is active, showing a sidebar with options like General, Tags, Site summary, Set location, Set geofence, Advanced tab setup, Users, and Alarm rules. The main content area is titled 'Gateway' and displays the following information:

Product	Color Control GX
Firmware version	v1.22
Last power up or restart	less than a minute
Last connection	less than a minute
Two way communication	Enabled
Logging interval	1 minute
Device instance	0

- To enable VRM two-way communication on the CCGX go to Settings→Services:

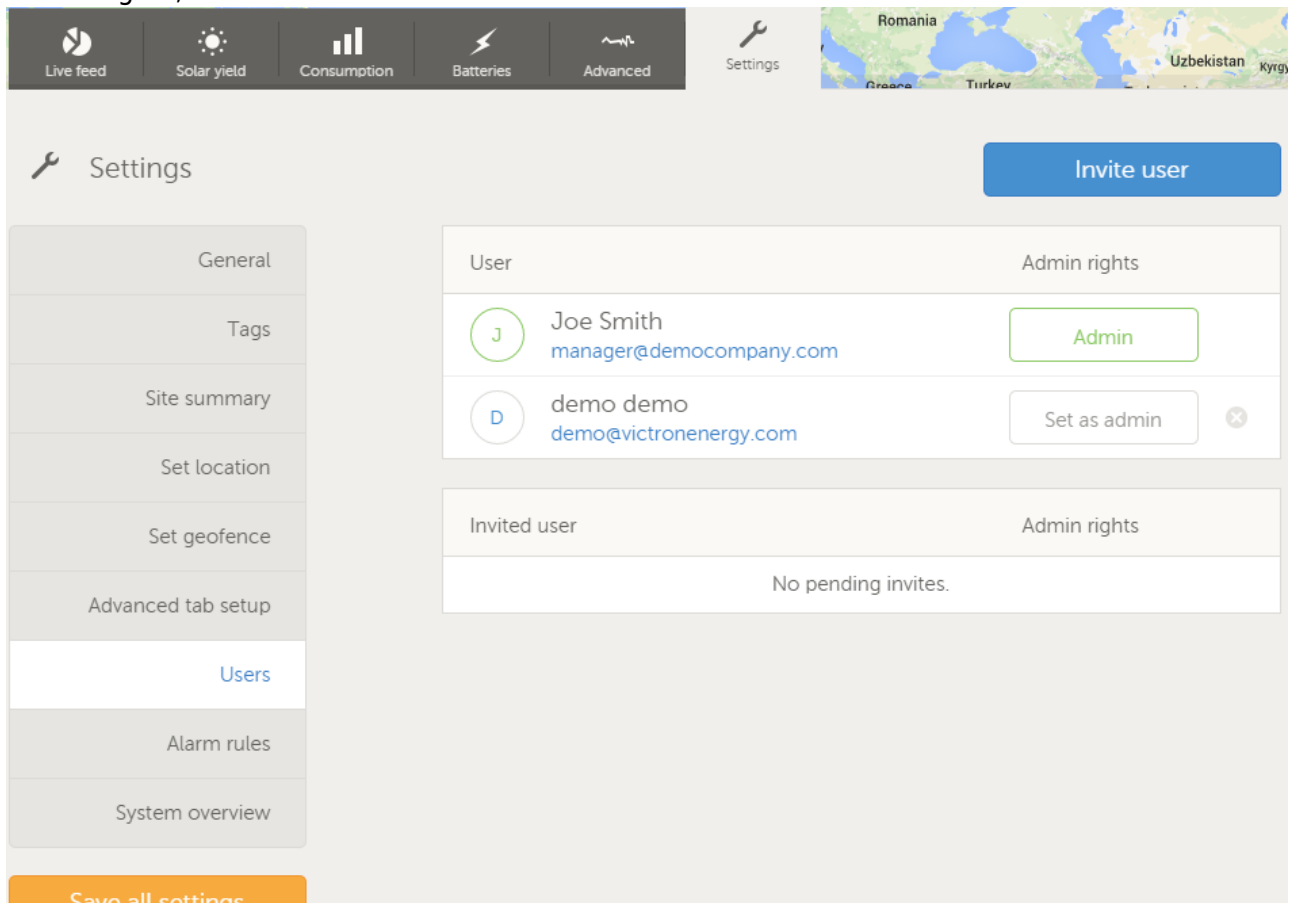
The screenshot shows the 'Services' page in the Victron Energy CCGX web interface. The page has a dark header with a back arrow, the title 'Services', and a location pin icon with the time '10:54'. Below the header, there are four service entries, each with a toggle switch:

Service	Status
Modbus/TCP	OFF
Oceanvolt Motor Drive	OFF
Valence Battery	OFF
VRM two-way communication	ON

At the bottom of the page, there are two buttons: 'Pages' and 'Menu'.

- Have Admin rights on the installation being configured. In the screenshot below, Joe Smith has

Admin rights, the demo user does not:



- CCGX must be connected to internet
- Use the latest version of the [VE Configuration Tools for VE.Bus products](#).
- Use the latest version of [VE Power Setup](#)

Remote VEConfigure only:

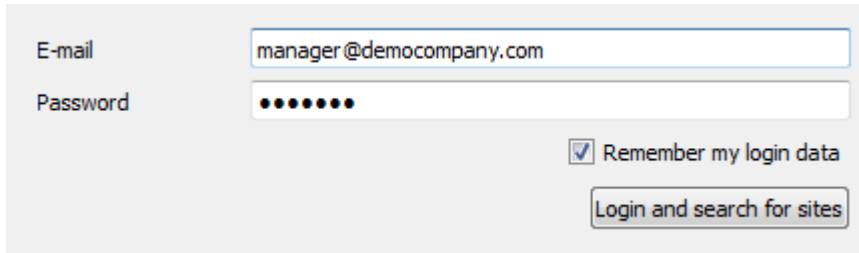
- If the VE.Bus device is connected to the CCGX via a VE.Bus to VE.Can interface, as often done in a Hub-1 system, this interface cable needs to run firmware version v2.05 or higher. Note that it is possible to first update firmware in the interface cable, and then remotely configure the VE.Bus system.

## Remote VEConfigure

- Remote VEConfigure works for both single unit systems as parallel and three phase systems.
- Remotely changing Assistant configuration is possible.

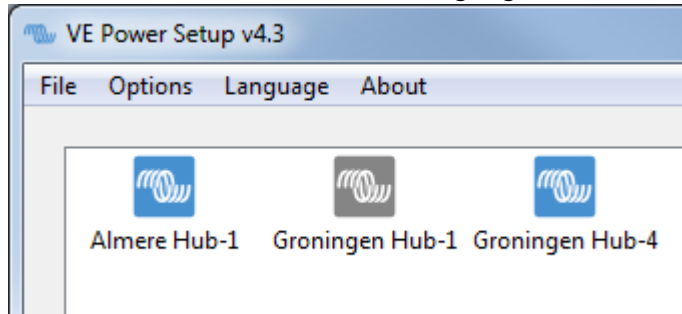
## Remote VEConfigure walk-through

1. Start VE Power Setup
2. Choose "Connected to a Color Control on VRM"
3. Login:

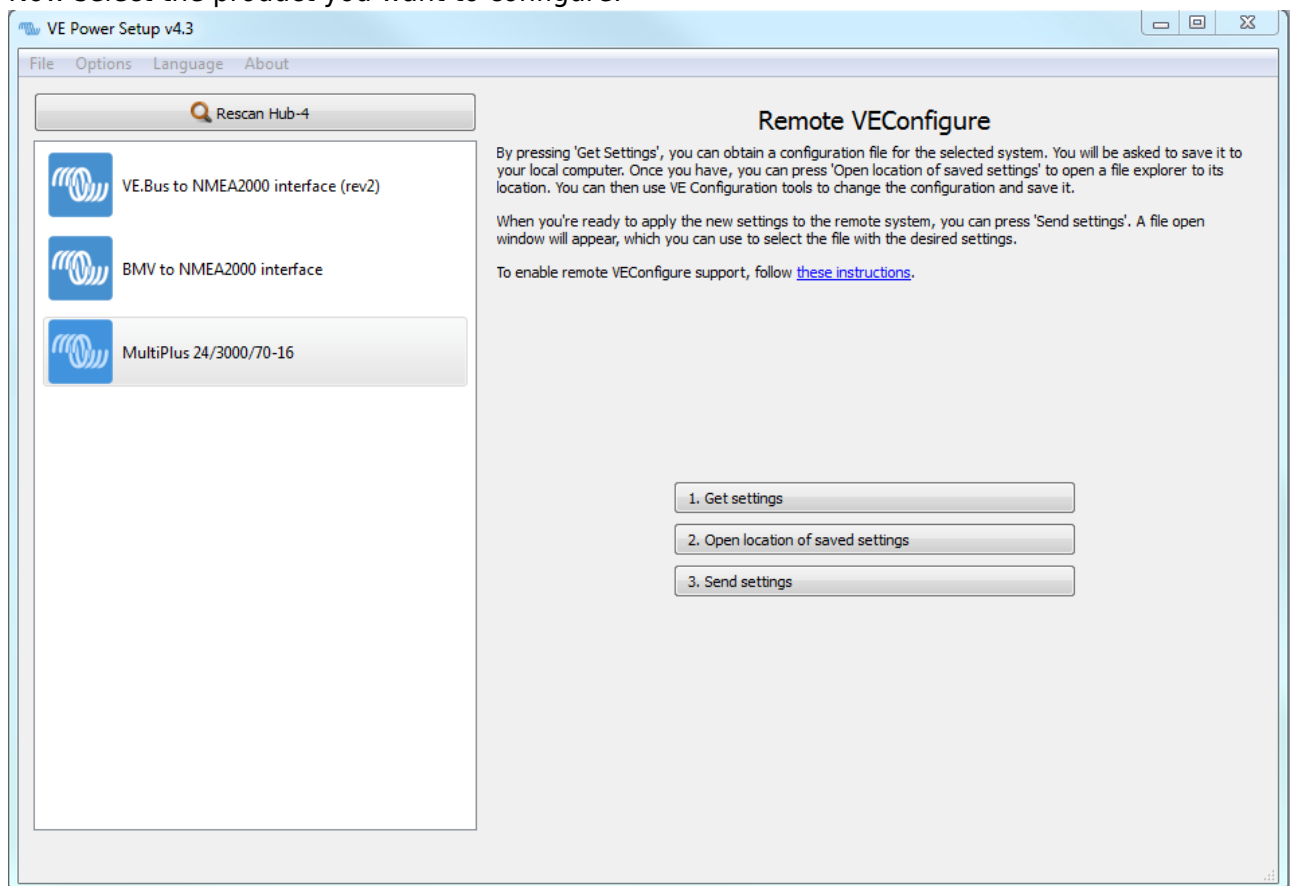


Form for logging into VE Power Setup v4.3. It includes fields for E-mail (manager@democompany.com) and Password (masked with dots). There is a checkbox for "Remember my login data" and a "Login and search for sites" button.

4. Choose the required site. Sites on which you have Admin-rights and that have two-way-communication enabled will be highlighted in blue:



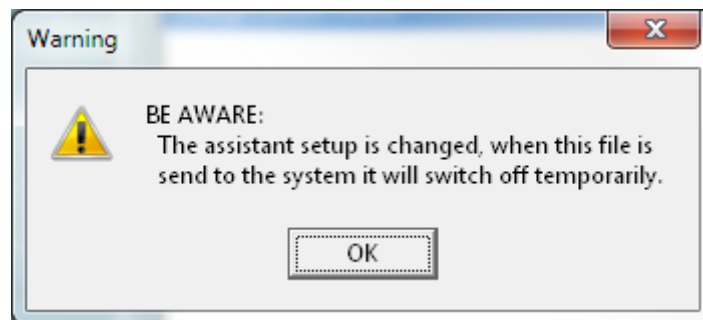
5. After selecting the site, VE Power Setup will establish communication to the selected site. Once established, it will perform a remote scan, to find all products connected to the Color Control. Now select the product you want to configure:



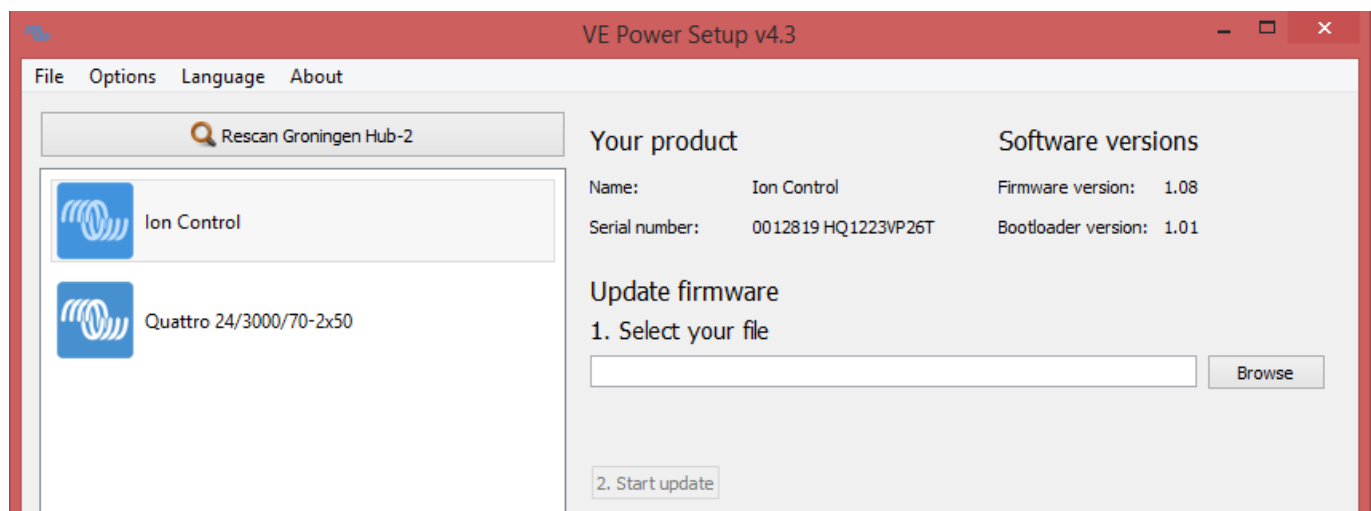
6. Choose "Get settings".
7. Save the settings file with an appropriate name.
8. Choose "Open location of saved settings".
9. Double click on the settings file. Depending on the system configuration "VE.Bus System Configurator" or "VEConfig" will open.
10. Make the required changes.
11. Close the configuration tool. The settings file will automatically be saved.
12. Go back to VE Power Setup, and choose "Send Settings".

13. Select the modified setting file and wait until done.

Note: changing certain settings, such as Assistants, will cause the inverter/charger to momentarily switch off and back on again. When such settings are changed, VEConfig will warn you when saving the settings:



## Remote Firmware update



Performing a remote firmware update is possible for the following products:

- both Skylla-i models
- MPPT 150/70 and 150/85 solar chargers
- Lynx Shunt VE.Can
- Ion Control
- VE.Bus to VE.Can interface

Configuration of the product will be preserved during the firmware update.

The procedure is very straight forward. First select a CCGX, same as in above Remote VEConfigure instructions. Then select the product that you want to update. The current firmware version will be shown, see image above.

Select the firmware file on your computer, and press the Update button. Firmware files are available via your Victron representative.

A question often asked is if it will also be possible to remotely update firmware in a VE.Bus device: Multis, Quattros and Inverters. The answer is no, that will, unfortunately, not be possible.

# DISQUS

~~DISQUS~~

From:

<https://www.victronenergy.com/live/> - **Victron Energy**

Permanent link:

[https://www.victronenergy.com/live/ccgx:ccgx\\_ve\\_power\\_setup?rev=1442496071](https://www.victronenergy.com/live/ccgx:ccgx_ve_power_setup?rev=1442496071)

Last update: **2015-09-17 15:21**

