




# Victron & SOLARMD Battery

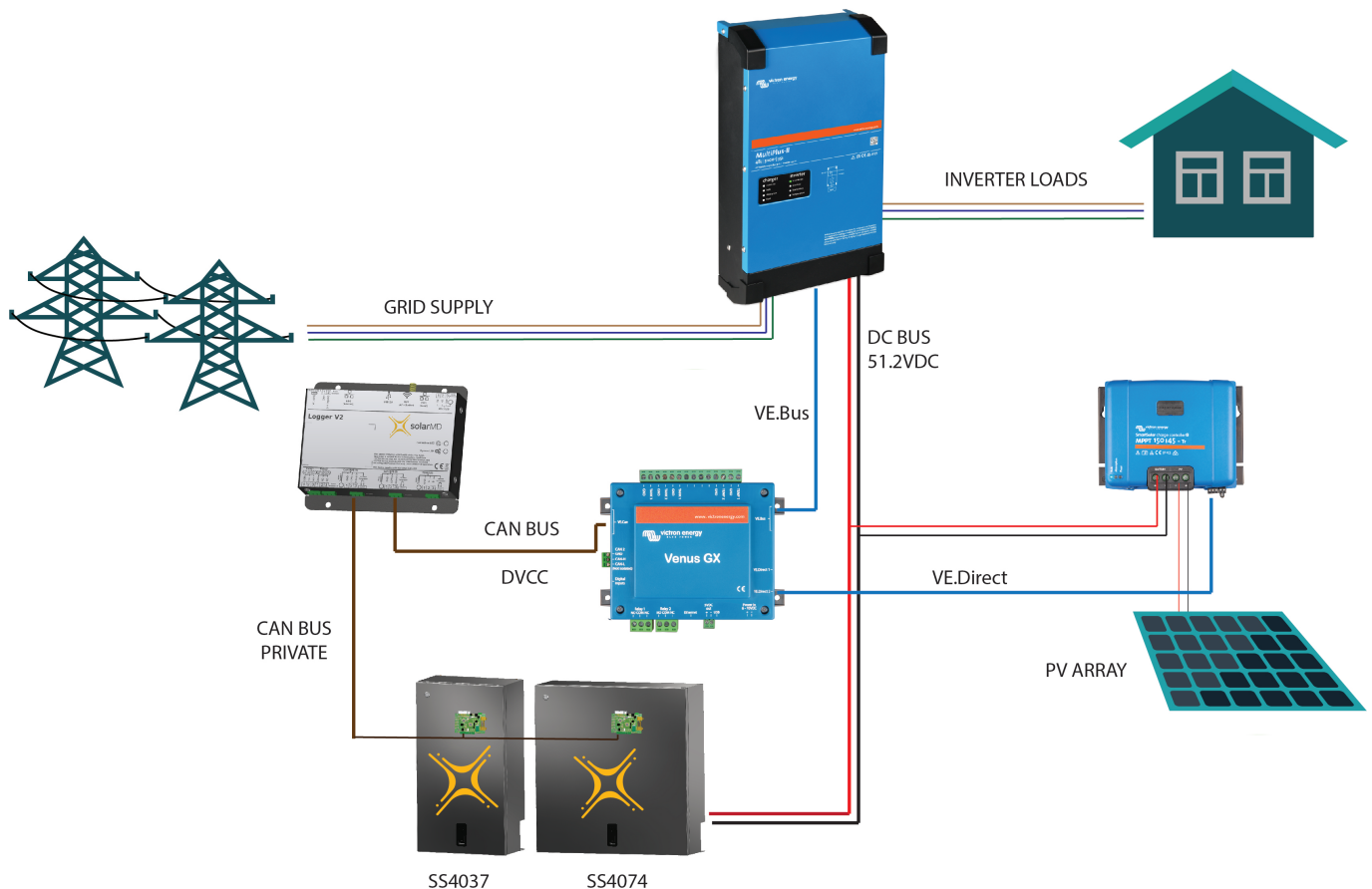
The combination of Victron products with SolarMD Battery lithium batteries has been tested and certified by the Solar MD R&D department. This combination has extensive field experience and is actively supported by Solar MD.

The SolarMD Battery includes an integrated Battery Management System (BMS) with each battery module and a LOGGER V2 that interfaces with the Victron [Venus-device](#) and supports multiple battery modules.

## Supported models

Model	SS4037	SS4074	SS202
Battery			
ESS	yes	yes	yes
Grid Backup	yes	yes	yes
Off-Grid	yes	yes	yes
Module capacity	3.7kWh	7,4kWh	7,4kWh
Module limit	256	256	256
Max capacity	947 kWh	1894,4 kWh	1894,4 kWh
Logger V2	yes	yes	yes

## Typical System overview



For SS237 - 25.6V (24V systems) please contact [Solar MD support team](#) for further assistance.

## 1. Product & System compatibility

### 1.1 Off-grid, Backup, and Energy Storage Systems are possible

Victron + SolarMD Battery can be used for the following system types:

- Energy Storage Systems - Self Consumption ([ESS - Start page](#))
- Grid Backup
- Off-grid

### 1.2 A Venus-device is required, eg Color Control GX (CCGX), Venus GX (VGX), etc

It is essential to use the CAN-bus connection of a [Venus-device](#) with the SOLARMD batteries for the keep-alive signal, communication of charge and discharge limits, error codes and state of charge. When used with Solar MD batteries, the minimum required firmware version for the [Venus-device](#) is v 2.15. Please use the latest firmware version on all connected devices, including CCGX/VGX, Inverter/Charger, and MPPTs. There are regular updates to improve performance and reliability.

### 1.3 All 48V Multis, MultiPlusses, MultiGrids and Quattros are compatible for SS074/SS4037/SS202

The minimum firmware version is 422. Though updating to the latest firmware is recommended where possible. These inverter/charger units must be connected to the [Venus-device](#) via the VE. Bus connection port. In grid-connected systems, advanced control functions are configurable in the ESS settings on the [Venus-device](#). In off-grid systems, the control functions of the SOLARMD Battery Management System (BMS) are built into the latest version of the [Venus-device](#).

### 1.4 All 48V BlueSolar and SmartSolar MPPT Chargers are compatible

For proper operation, the Battery battery needs to be able to control the charge current of the solar MPPTs. It is recommended to use the MPPTs with VE. Direct port with SOLARMD batteries. MPPTs with a VE.Direct port MPPTs are controlled via the [Venus-device](#). Make sure the [Venus-device](#) runs v2.15 or later, and the MPPTs to 1.39 or the latest available version. The MPPT requires connection to the [Venus-device](#) to regulate charge currents as the batteries require (due to temperature, etc) To test operation, try disconnecting the [Venus-device](#) from the MPPT. After a time-out, the MPPT will stop charging and flash an error code on its LEDs. The error code is error #67: no BMS. MPPTs with a VE.Can port Firmware should be at least version 2.05. When using VE.Can MPPT's, it is recommended to use the Venus GX (VGX), instead of the CCGX. The VGX has two CAN-bus interfaces available and allows communication between the MPPTs, SOLARMD and the VGX.

### 1.5 Battery compatibility

The following batteries are supported for the 48V systems:

<b>SolarMD BATTERY LV series type 51.2V</b>
BATTERY SS4037
BATTERY SS4074
BATTERY SS202

For SS237 - 25.6V (24V systems) please contact [Solar MD support team](#) for further assistance.

Solar MD also releases a firmware update for the LOGGER V2 and BMS. LOGGER V2 Firmware versions earlier than V6-13 are not compatible with Victron equipment and can cause the battery to not be detected. All software updates of Solar MD equipment are done remotely and automatically as soon as the Logger V2 has an internet connection.

Minimum Solar MD firmware version: LOGGER V2 6.13\_15-Mar-2017.

This version can be seen on the Solar MD monitoring platform.

Batteries BMS\_PL with older firmware versions can be updated with BMS\_EM hardware. Please contact SOLARMD for more information.

## 2. Minimum Battery Sizing

The following information is provided by Solar MD, it is reproduced here for your convenience and should always be confirmed with the latest Solar MD manuals and specifications.

Each battery module is 72Ah (SS4037) or 144Ah (SS4074) at 48V (51.2V nominal).

The following charge rates are managed automatically by the SolarMD LOGGER V2 and [Venus-device](#). Temperature effects on charge rates should be considered in the design stage in extreme hot and cold climates.

Using very large solar arrays with battery banks that are too small can exceed the limits of the batteries ability to charge and possibly lead to the LOGGER V2 triggering over-current alarms.

The table below shows the minimum number of battery modules required for the specified inverter/charger configuration:

### Battery Modules Required - per 3.7kWh (SS4037)

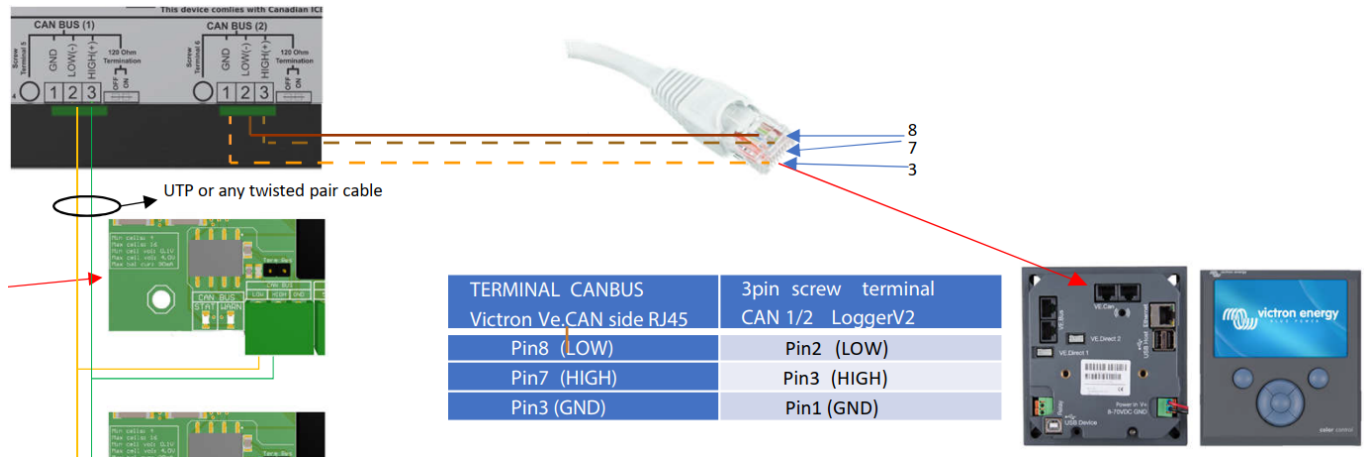
Phases	Single Phase	Three Phase	Single Phase	Three Phase
Inverter/Charger	Self-consumption	Self-consumption	Off-grid	Off-grid
Multiplus 48/3000/35	1	3	1	3
Multiplus 48/5000/70	1	3	2	6
Quattro 48/5000/70-100/100	1	3	2	6
Quattro 48/8000/110-100/100	1	4	2	6
Quattro 48/10000/140- 100/100	1	5	3	9
Quattro 48/15000/200- 100/100	1	6	4	9
EasySolar 48/3000/35-50 MPPT150/70	1	3	1	3
EasySolar 48/5000/70-100 MPPT150/100	1	3	1	6

### Battery Modules Required - per 7.4kWh (SS202 / SS4074))

Phases	Single Phase	Three Phase	Single Phase	Three Phase
Inverter/Charger	Self-consumption	Self-consumption	Off-grid	Off-grid
Multiplus 48/3000/35	1	3	1	3
Multiplus 48/5000/70	1	3	2	6
Quattro 48/5000/70-100/100	1	3	2	6
Quattro 48/8000/110-100/100	1	4	2	6
Quattro 48/10000/140- 100/100	1	5	3	9
Quattro 48/15000/200- 100/100	1	6	4	9
EasySolar 48/3000/35-50 MPPT150/70	1	3	1	3
EasySolar 48/5000/70-100 MPPT150/100	1	3	1	6

## 3. CAN Bus Wiring

Use any UTP cable. Plug 3 of the wires (PIN 7, PIN 8, PIN 3) into the SolarMD LoggerV2. Plug the other side with RJ45 connector into the [Venus-device](#).



Then, plug a [VE.Can terminator](#) in the other VE.Can socket on the [Venus-device](#) alternatively, you can use the termination on the Logger V2 side. Two VE.Can terminators are included with the package of the [Venus-device](#) as an accessory, only one is used. Keep the other one as a spare.

More information about the cable can be found in its manual.

Without properly connecting this cable, the battery will not show up on the display of the [Venus-device](#).

It is important to ensure this connection and display of the battery on the [Venus-device](#) display before attempting firmware updates or settings changes on other devices if they depend on the power supply from the battery. It is the LOGGER V2 that signals the battery modules to shut down if the signal from the [Venus-device](#) has not been received.

## 4. VEConfigure settings

This section presumes familiarity with VEConfigure software.

### 4.1 General tab

- Check the “Enable battery monitor” function
- Set the battery capacity to the total capacity of the battery: eg 72Ah times the number of battery modules for the 3.7 model.
- The other parameters (“State of charge when bulk finished” and “Charge efficiency”) can be left to their default setting: They are ignored for SolarMD battery installation.

### 4.2 Charge parameters

In normal operation, the charge parameters are controlled by the SOLARMD LOGGER V2 and communicated through the system by the Venus-device to the inverter/charger and MPPT. However, as a precaution, it is advised to set these as suggested below.

## Charger tab

<b>VEConfigure Charge Parameter</b>	<b>Setting</b>
Battery type	Lithium
Charge curve	Fixed
Absorption voltage	54.6 V
Float voltage	53.4 V
Absorption time	1 Hr

Note: make sure to double-check the float voltage after completing Assistants, and if necessary, set it back to 53.4 V.

## 4.3 Inverter Settings

In the Inverter tab of VEConfigure

<b>VEConfigure Inverter Parameter</b>	<b>Setting</b>
DC input low shut-down	47V
DC input low restart	51V
DC input low pre-alarm*	51V

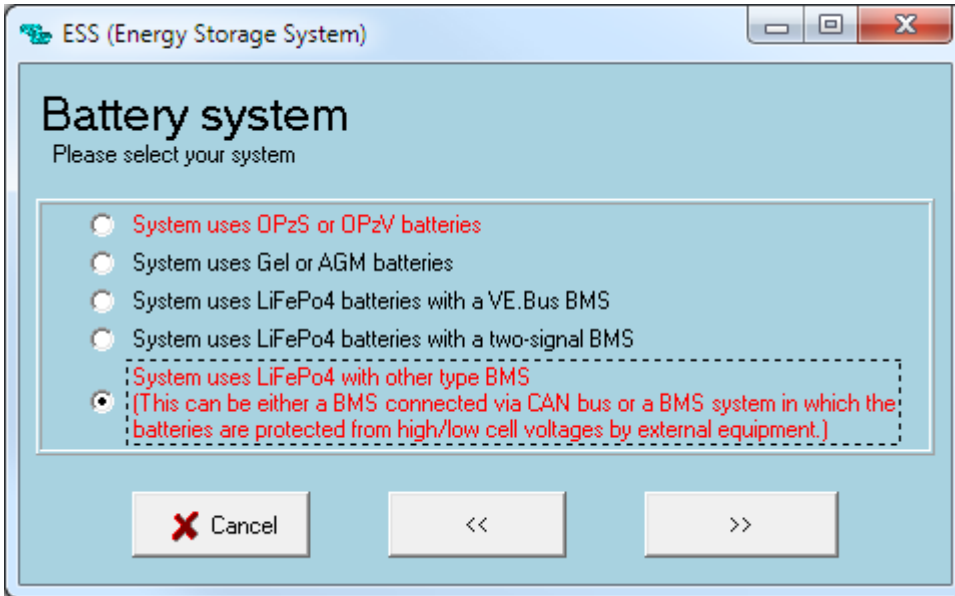
\* The pre-alarm setting is dependent on your preference and on site-specific requirements. You may wish for this to be activated earlier (eg 51V) in an off-grid situation to allow time to start a backup generator. If the system is configured in ESS mode, you may not wish to have this alarm trigger until below the Sustain threshold voltage (eg 50V), as this system is in no danger normally and will 'sustain' at 51V without needing to trigger an alarm.

## ESS System Settings

If you are using the battery as part of a [grid connected ESS system](#), please review the [ESS Quickstart guide](#) and [Design and Installation Manual](#).

The settings that are specific to the SolarMD battery in the VEConfigure ESS Assistant are below:

Select the externally managed Lithium battery option



ESS Parameter	Settings
Sustain voltage.	50V
Dynamic cut-off values	set all values to 49V.
Restart offset:	1.2 V (Default)

## 5. Venus-device and LoggerV2 Configuration

On the [Venus-device](#), go to Settings, System setup:

Venus Settings → System Setup Parameter	Value
DVCC	ON
Shared Voltage Sense	OFF
Shared Temperature Sense	OFF

If you have a VE.Can MPPT, it is advised to use the Venus GX in place of the CCGX.

- Select the CAN-bus BMS (500 kbit/s) CAN-profile in the CCGX.

Menu path:

Settings → Services → CAN-profile.

- On the Solar MD portal ([login.mypower24.co.za](http://login.mypower24.co.za)) Select Victron CAN Translator on CAN2:

Menu path:

My Devices → Logger → Interfaces →CANBUS2

- After properly wiring and setting up, the Battery will be visible as a battery in the device list:

(if you have multiple batteries a single entry will show up, which represents all batteries).

- The parameters option within the battery page shows the actual battery charge and discharge limits

This parameters page is also a good place to check that all batteries are connected and working properly. In normal working conditions, for the SS4037 (3.7 model), the current limit is 100A per module. For example, 140A charge current limit ( $400 / 100 = 4$ ) means there are 4 SOLARMD battery Batteries connected.

## Color Control GX Configuration

The CCGX only has one available VE.Can port. It is not possible to connect both CAN products such as VE.Can MPPT (250 kbit/s) and a Battery battery CAN-bus (500 kbit/s) together on the CCGX. As the SolarMD Logger V2 MUST be connected, you will need to use the port for that. This will mean no data is collected from the VE.Can MPPT, nor can the CCGX control it. This means you are required to use the "Allow to Charge" wire configuration for the MPPT. "Allow to Charge" on the Logger V2 can be set via the 2 provided Relays.

## Venus GX Configuration

The VGX has two CAN-bus interfaces available. The VE.Can MPPT remain connected to the VE.Can port, while the SOLARMD CAN-bus cable should use the specific CAN-bus connections (H, L, GND). This allows data from the MPPT and SOLARMD battery simultaneously. You will only need to connect the Allow-to-charge wires if using the VE.Can MPPT and VGX.

The CAN-bus connections are galvanically isolated at the SOLARMD LOGGER V2. There are no issues using the non-isolated connection of the VGX.

## 6. VE-Direct MPPT Settings

In normal operation, the MPPT charge characteristics are governed by the [Venus-device](#) connected to the SolarMD battery.

This section presumes familiarity with [VictronConnect](#).

The settings below are a precautionary measure.

MPPT Parameter	Setting
Battery voltage.	48V
Absorption voltage	54.6V

From:  
<https://www.victronenergy.com/live/> - **Victron Energy**

Permanent link:  
[https://www.victronenergy.com/live/battery\\_compatibility:solar\\_md?rev=1564238189](https://www.victronenergy.com/live/battery_compatibility:solar_md?rev=1564238189)

Last update: **2019-07-27 16:36**

