

# Overview of available Assistants

Click on the thumbnails to see the full screenshot.

## 1. Assistants related to Solar

Make sure to read [Configuring solar systems with Quattros and Multis](#) when configuring a solar system.

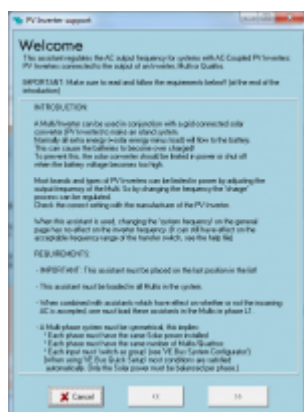
### ESS Assistant



For Energy Storage Systems (ESS). The Assistant manages the prioritising of Solar Power.

[Documentation.](#)

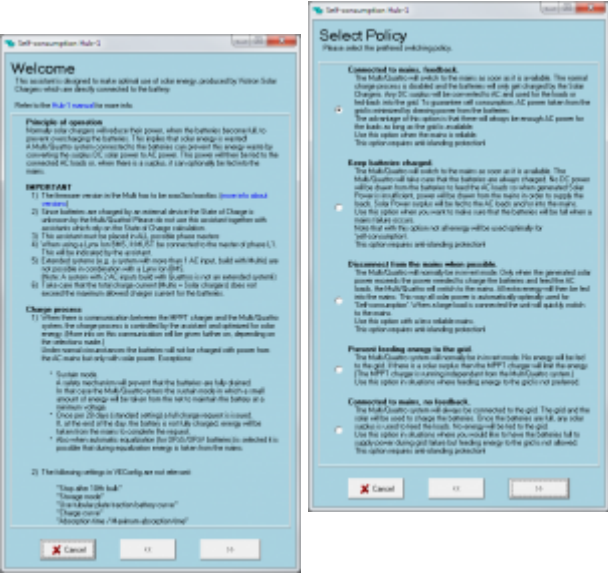
### PV Inverter support



Use this Assistant in Off-grid systems that have AC-Coupled solar power: a grid-tie PV inverter connected to the AC out of a Multi or Quattro inverter/charger.

[Documentation.](#)

### DEPRECATED Self-consumption Hub-1 - for dc-coupled systems



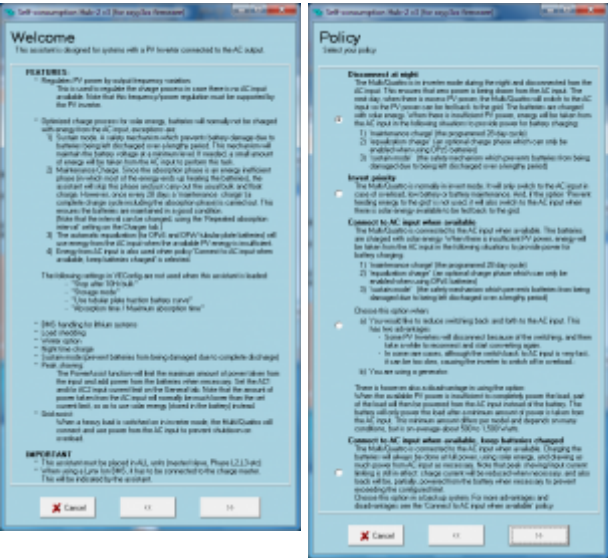
Note that Hub-1 is deprecated in favor of [ESS](#).

[Hub-1 Assistant documentation](#).

Hub-1 is only for hardware with new microprocessor (26 or 27).

[Hub-1 and Hub-2 Assistant notes](#)

## DEPRECATED Self-consumption Hub-2 v3 - for ac-coupled systems



Take note of the [factor 1.0 rule](#).

Deprecated in favor of [ESS](#).

Only for hardware with new microprocessor (26 or 27).

[Hub-1 and Hub-2 Assistant notes](#)

## DEPRECATED Self-consumption Hub-2 v2 - for ac-coupled systems

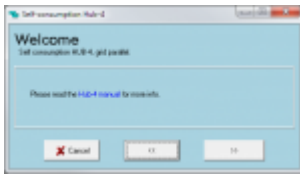
Use only on hardware with old microprocessor (19 or 20). On newer systems, use the version 3 instead, see above.

Take note of the [factor 1.0 rule](#).

Note that all Hub-2 Assistant versions have been deprecated in favor of [ESS](#).

[Hub-1 and Hub-2 Assistant notes](#)

## DEPRECATED Self-consumption Hub-4



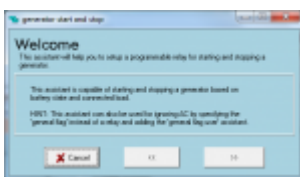
Do not use Hub-4 for new installs. It is deprecated in favor of [ESS](#).

[Hub-4 manual](#).

Only for hardware with new microprocessor (26 or 27).

## 2. Functional Assistants

### Generator start and stop



Automatically start and stop a generator based on battery state of charge and actual load of a system. Note that automatic genset start/stop functionality is also available on the Virtual switch tab in VEConfigure, which is easier to work with.

This is one of the available options to automatically start and stop a generator using Victron equipment. See the [auto-generator-start-stop](#) document for an overview of all options. More general information about using a generator in combination with Victron is available [here](#).

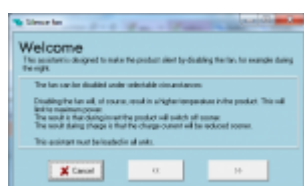
This Generator start and stop Assistant is also the one to use to [configure Ignore AC Input using Assistants](#).

### AC Current sensor



Reads PV Inverter current, using an AC Current sensor (CSE000100000), connected to a VE.Bus product. More information available in the [AC Current sensor manual](#).

## Silence fan



Disable the fans at night with a simple external switch, to ensure a quiet night. Very useful for boats and motorhomes.

## Input current limit control



Automatically set the input current limit to a predefined value based on the state of an aux input or rpm measured with the 1140 interface. Used in the following systems:

1. A variable speed generator, flywheel generator or waterturbine, where the available AC power depends on the rpm. See the [Interface 1140 \(ASS030510000\) manual](#) for more information.
2. Vehicles or boats that have two different types of shore plugs. One high power plug and one low power plug. Use the assistant to automatically set the input current limiter based on the used plug.
3. And there are more situations that can come to mind, for example a Multi connected behind a transfer switch.

## Charge current control



Sets the charge current to a predefined setpoint, based on the active AC Input (for Quattros) or the state of an aux input.

## Safety switch



Used to wire an emergency stop button to a VE.Bus system.

## VE.Bus BMS support



Required in combination with a [VE.Bus BMS](#), used with our [12.8 V Lithium batteries](#). This Assistant communicates with the BMS and controls the Multi based on the BMS measurements.

## Two-Signal BMS support (previously called Lynx Ion BMS support)



Required in combination with a [Lynx Ion BMS](#), used with our [24 V 180 Ah Lithium system](#). This Assistant can also be used to control the Multi with a third party Lithium system including BMS. See our PDF [Connecting other lithium battery systems to Multis and Quattros](#) for more information.

## 3. Advanced Assistants

### Programmable relay



### Relay locker



## General flag user



## DISQUS

~~DISQUS~~

From:  
<https://www.victronenergy.com/live/> - **Victron Energy**

Permanent link:  
[https://www.victronenergy.com/live/assistants:overview\\_of\\_available\\_assistants?rev=1548676823](https://www.victronenergy.com/live/assistants:overview_of_available_assistants?rev=1548676823)

Last update: **2019-01-28 13:00**

