

Overview of available Assistants

Click on the thumbnails to see the full screenshot.

1. Assistants related to Solar

Make sure to read [Configuring solar systems with Quattros and Multis](#) when configuring a solar system.

ESS Assistant



For Energy Storage Systems (ESS). The Assistant manages the prioritising of Solar Power.

[Documentation.](#)

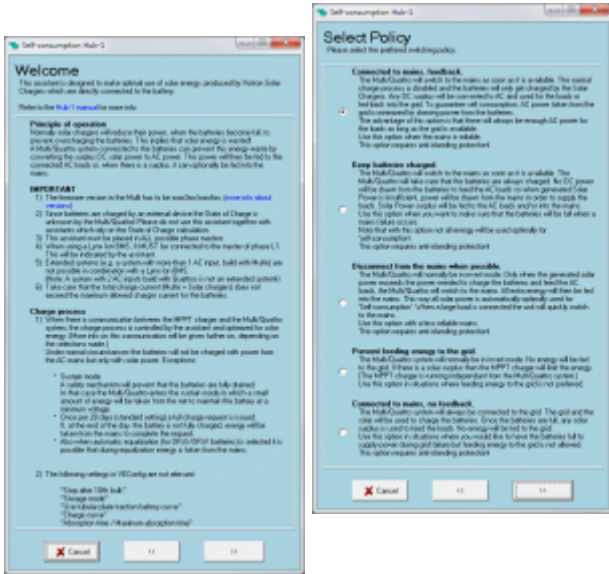
PV Inverter support



Use this Assistant in Off-grid systems that have AC-Coupled solar power: a grid-tie PV inverter connected to the AC out of a Multi or Quattro inverter/charger.

[Documentation.](#)

DEPRECATED Self-consumption Hub-1 - for dc-coupled systems

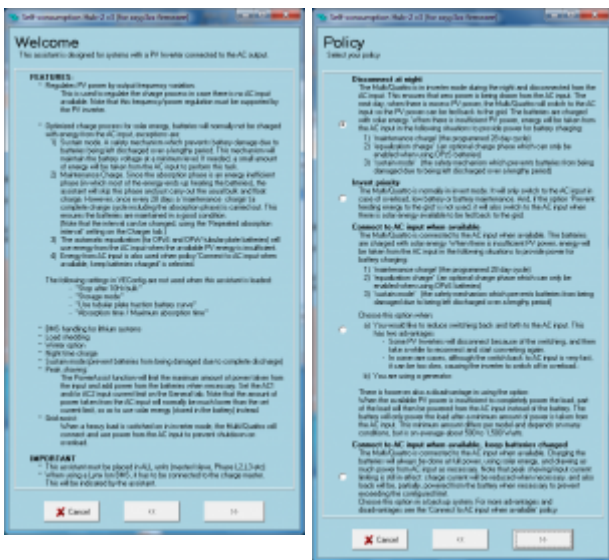


Self-consumption hub-1 Assistant.

Deprecated in favor of ESS.

Only for hardware with new microprocessor (26 or 27).

DEPRECATED Self-consumption Hub-2 v3 - for ac-coupled systems



Take note of the **factor 1.0 rule**.

Deprecated in favor of ESS.

Only for hardware with new microprocessor (26 or 27).

DEPRECATED Self-consumption Hub-2 v2 - for ac-coupled systems

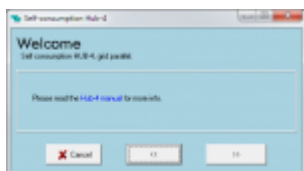
Use only on hardware with old microprocessor (19 or 20). On newer systems, use the version 3

instead, see above.

Take note of the [factor 1.0 rule](#).

Note that both Hub-2 Assistants are deprecated in favor of [ESS](#).

DEPRECATED Self-consumption Hub-4



Do not use Hub-4 for new installs. It is deprecated in favor of [ESS](#).

[Hub-4 manual](#).

Only for hardware with new microprocessor (26 or 27).

2. Functional Assistants

Generator start and stop



Automatically start and stop a generator based on battery state of charge and actual load of a system. Note that automatic genset start/stop functionality is also available on the Virtual switch tab, which is easier to configure and does not require uploading another type of firmware. See the PDF [VE.Bus firmware versions explained](#) for more information about the different firmware types.

This Generator start and stop Assistant is also the one to use to [configure Ignore AC Input using Assistants](#).

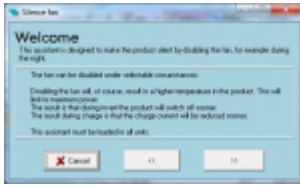
AC Current sensor



Reads PV Inverter current, using an AC Current sensor (CSE000100000), connected to a VE.Bus product. More information available in the [AC Current sensor manual](#).

Silence fan

Disable the fans at night with a simple external switch, to ensure a quiet night. Very useful for boats and motorhomes.



Input current limit control



Automatically set the input current limit to a predefined value based on the state of an aux input or rpm measured with the 1140 interface. Used in the following systems:

1. A variable speed generator, flywheel generator or waterturbine, where the available AC power depends on the rpm. See the [Interface 1140 \(ASS030510000\) manual](#) for more information.
2. Vehicles or boats that have two different types of shore plugs. One high power plug and one low power plug. Use the assistant to automatically set the input current limiter based on the used plug.
3. And there are more situations that can come to mind, for example a Multi connected behind a transfer switch.

Charge current control



Sets the charge current to a predefined setpoint, based on the active AC Input (for Quattros) or the state of an aux input.

Safety switch



Used to wire an emergency stop button to a VE.Bus system.

VE.Bus BMS support

Required in combination with a [VE.Bus BMS](#), used with our [12.8 V Lithium batteries](#). This Assistant communicates with the BMS and controls the Multi based on the BMS measurements.



Two-Signal BMS support (previously called Lynx Ion BMS support)

Required in combination with a [Lynx Ion BMS](#), used with our [24 V 180 Ah Lithium system](#). This Assistant can also be used to control the Multi with a third party Lithium system including BMS. See our PDF [Connecting other lithium battery systems to Multis and Quattros](#) for more information.



3. Advanced Assistants

Programmable relay



Relay locker



General flag user



~~DISQUS~~

Last update: 2018-06-21 08:17 assistants:overview_of_available_assistants https://www.victronenergy.com/live/assistants:overview_of_available_assistants?rev=1529561830

From: <https://www.victronenergy.com/live/> - **Victron Energy**

Permanent link: https://www.victronenergy.com/live/assistants:overview_of_available_assistants?rev=1529561830

Last update: **2018-06-21 08:17**

