

Ignore AC input using the Generator Assistant

Introduction

Ignoring AC input will force a Multi or Quattro into inverter-mode on certain conditions, even though there is mains or generator power available. For example to force the system to run 100% on battery and solar power.

Ignoring the AC input was first introduced on the Virtual switch tab and can also be made with Assistants. Note that it is much easier to use the Virtual switch to configure this.

Other solutions

Instead of using the Generator start/stop Assistant, there are other solutions that can be simpler to setup for many systems:

1. Use the Virtual switch
2. For systems with recent hardware, which has the new-type microprocessor (the 7 digit firmware numbers starts with 26 or 27, instead of 19 or 20) use the Self-consumption Hub-2 v3 assistant. That is an all-in-one assistant takes away much of the complexity.

Making AC Ignore by using the Generator start/stop and the General flag assistant

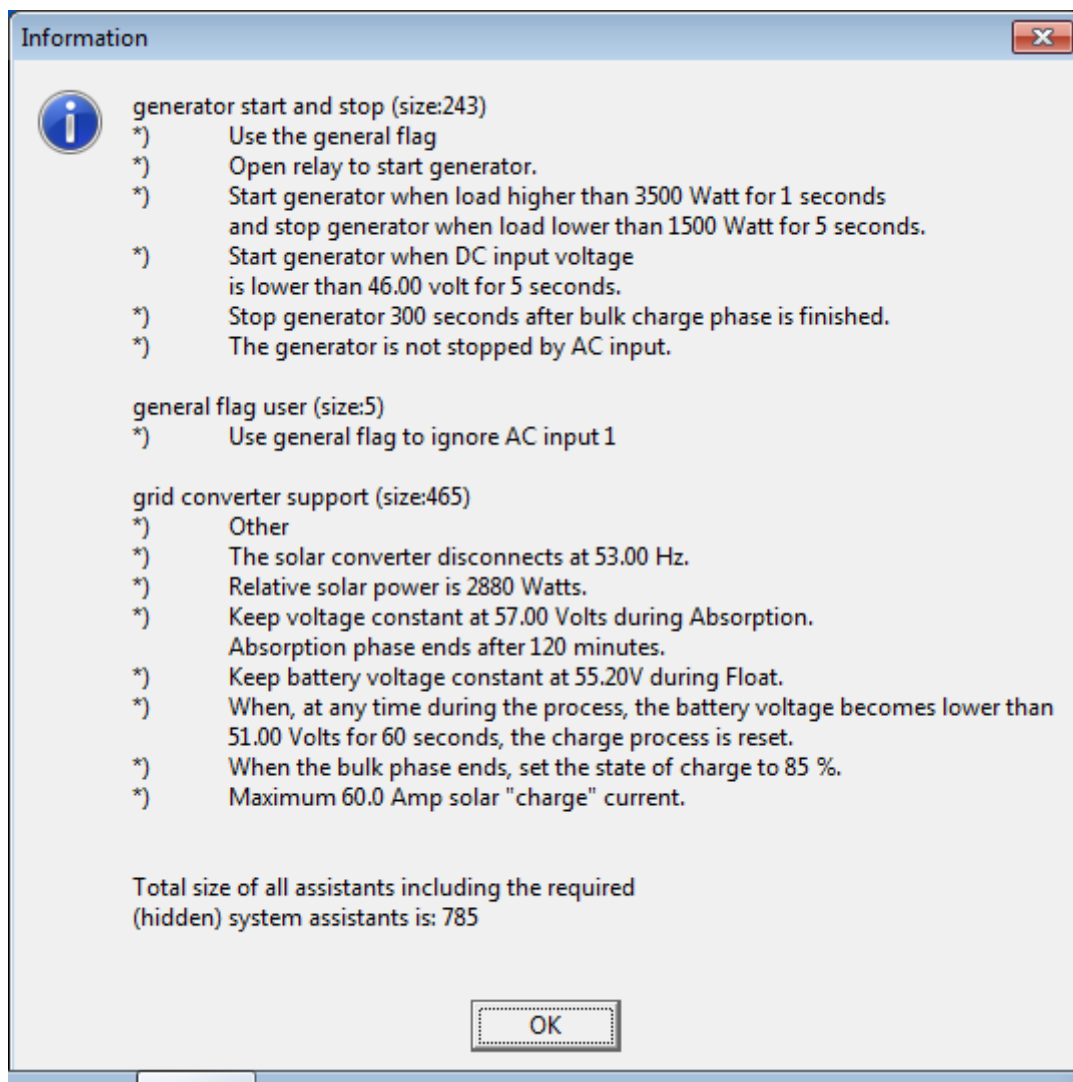
The most common (or only?!) system where below assistant configuration makes sense is an AC-coupled PV installation, using Multis or Quattros with the old-type microprocessor (the 7 digit firmware numbers starts with 19 or 20, instead of 26 or 27).

Below screenshot shows a configuration for an AC-coupled PV system. It is running on an old-type microprocessor (19xxxxx or 20xxxxx) and can therefore not be configured using the Self-consumption Hub-2 v3 assistant.

There are three assistants used:

1. Generator start and stop, which is not used to start a real genset, but to define the logic for ignoring the ac input. This is done by setting it to drive the general flag.
2. General flag, which picks up the result of the generator start/stop logic. It uses the outcome to ignore the ac input
3. PV Inverter support, which regulates the output of the PV inverter by changing the AC output frequency while in inverter mode.

Note that the order in which the assistants are is important!



~~DISCUS~~

From:
<https://www.victronenergy.com/live/> - **Victron Energy**

Permanent link:
https://www.victronenergy.com/live/assistants:ignore_ac_input_using_the_generator_assistant?rev=1419846386

Last update: **2014-12-29 10:46**

